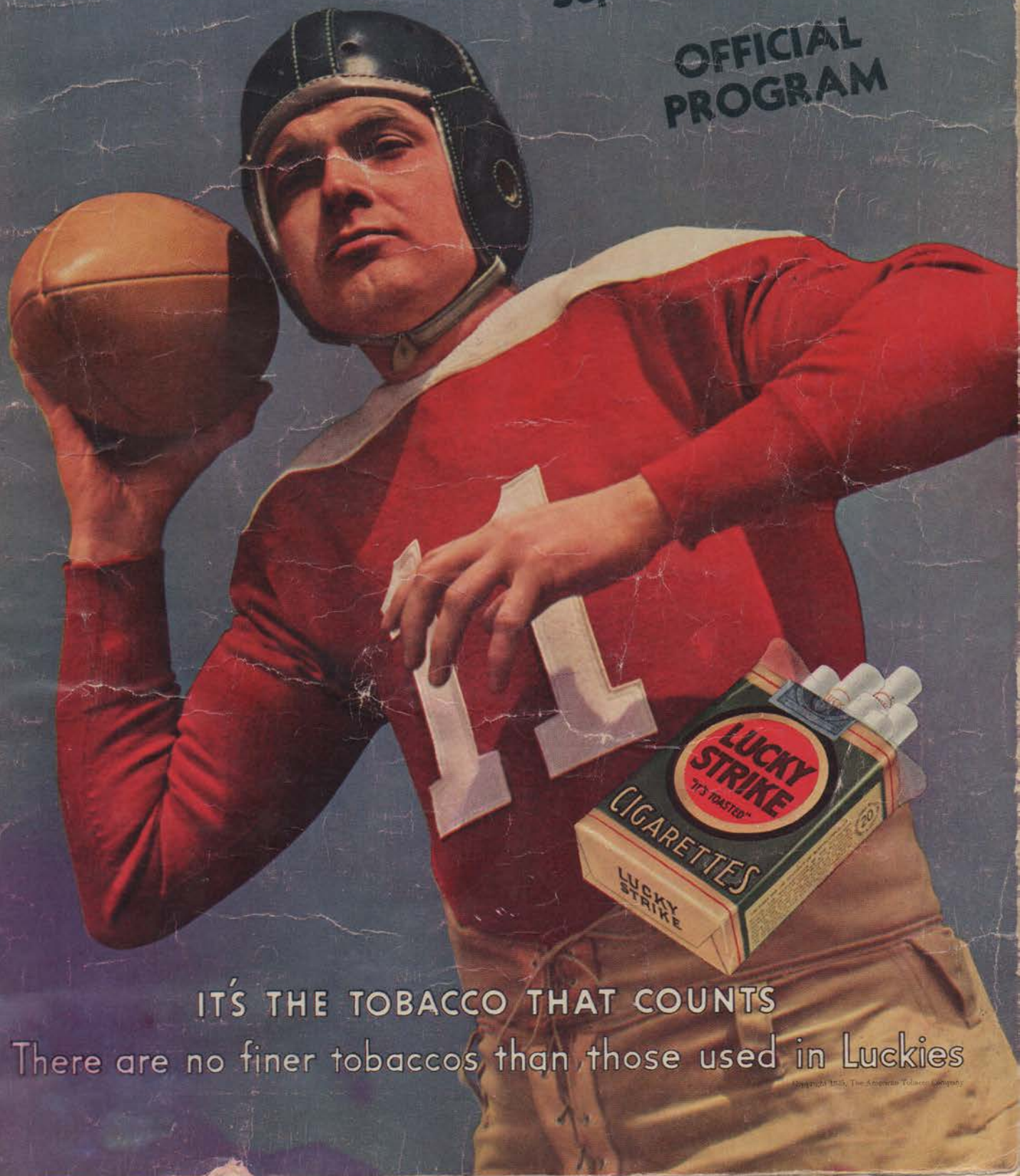


OCCIDENTAL vs LUMBERJAX

September 28, 1935

OFFICIAL
PROGRAM



IT'S THE TOBACCO THAT COUNTS

There are no finer tobaccos than those used in Luckies

Copyright 1935, The American Tobacco Company



Flagstaff

Winslow

SWITZER'S HARDWARE

PHONE 94

FLAGSTAFF, ARIZONA

TRY SWITZER'S

A Good Drug Store

That

Can

Fill Your Needs!

The Rexall Store

MOORE DRUG CO.

When You Buy
It At

PENNEY'S
J. C. PENNEY COMPANY, Inc.

IT'S RIGHT

- ... In Price*
- ... In Quality*
- ... In Style*

Cress Brothers

Cleaners and Tailors

●
Eighteen Years Of
Satisfactory Service
In Flagstaff

●
College Representatives:

ANDY WOLF

TOM BRADY

SOUVENIR
EDITION

●

**THE OCCIDENTAL
COLLEGE**
of
Los Angeles
vs.
**ARIZONA STATE
TEACHERS COLLEGE**
(Flagstaff)



341.

SATURDAY, SEPTEMBER 28, 1935

SKIDMORE FIELD

FLAGSTAFF

Published By
THE ATHLETIC BOARD OF CONTROL,
ARIZONA STATE TEACHERS COLLEGE AT FLAGSTAFF, ARIZONA

Edited By John Ricca

●

PRICE 10 CENTS

PRINTED BY THE COCONINO SUN

OXY COLLEGE

Occidental College, a privately endowed California College whose enrollment averages around 600, comes to Flagstaff to play the Lumberjacks for the first time in history. Although the Lumberjacks have played a number of teams in the Southern California Conference, they have never encountered Occidental.

In the winter of 1885-86, Reverend W. S. Young, D.D., called together five Presbyterian pastors of Los Angeles, with a number of laymen, to determine what steps could be taken toward founding a Presbyterian institution of higher learning. As a result, "The Occidental University of Los Angeles" was incorporated, April 20, 1887, and Dr. S. H. Weller was chosen as its first president. Buildings were erected, and enrollment of students began in 1888. In 1891 along with other changes in the charter, a new name was adopted—"The Occidental College of Los Angeles."

In 1896 the college was destroyed by fire. The old site at Boyle Heights was replaced at Highland Park, and students resumed studies in three new buildings, erected in the course of two years at the new campus.

A period of rapid growth necessitated another change of location. A strenuous campaign accomplished this and in 1914 the

campus site was moved to Eagle Rock, a part of the city of Los Angeles.

Today we find the Occidental College campus extending over ninety acres, and affording a landscape of rare beauty. The campus is built on a hillside and above its surrounding low foothills appear—the Sierra Madre Mountains, including Mount Lowe, and Mount Wilson with its famous observatory. In two other directions the sky line is broken by the Verdugo and Santa Monica ranges. A low area towards the southwest gives the sea breeze direct access to the campus.

Various generous gifts have added immensely to the college and its buildings. The W. C. Patterson stadium, completed several years ago, was erected by Mrs. Patterson at a cost of \$25,000, and provides for outdoor sports unequalled in Southern California.

Occidental College, originally a sectarian college, is now listed as a non-sectarian school of liberal arts and natural sciences with definite aims to afford adequate preparation for professional and post-graduate study.

Ranking high among the southwestern colleges, we must look upon Occidental as a school that has come to the top through hard work upon the part of a group of men interested in higher education.

Occidental's present president is Remsen D. Bird.

Fill Up After The Game With

R I C H F I E L D
O I L S

Located At
College Entrance

Texaco and Richfield
Credit Cards Accepted

DeLuxe Barber Shop

"Lumberjacks"

YOU TRIM THEM

WE TRIM YOU

Dine And Dance

AT

COBB'S

DINNERS

FOUNTAIN

NEWSSTAND

HOW IT BEGAN—

COLLEGE CHEERING: First college cheer credited to Princeton students, who got the idea from an "unknown soldier" of the 7th Regiment of New York, April 30, 1861, as the regiment mobilized for war.

INTERCOLLEGIATE FOOTBALL: The first intercollegiate football game in the world was played by Princeton and Rutgers, November 6, 1869, at New Brunswick, N. J.

SIGNALS: Originally sentences were used for signals (1882), but later signals consisted of letters beginning a sentence and, finally, numbers.

"MOLESKINS": A material which, in 1888, replaced canvas as the material for football suits.

HELMETS: First appeared in 1896; now compulsory equipment in some conferences.

FORWARD PASS: Introduced in 1906, but elaborately restricted.

SCRIMMAGE: Substituted for the Rugby scrum in 1880. The positions of the players were named: The present-day ends were called "end men"; tackles were called "next-to-end" and, later, "tacklers," the center was called a center, but the guards were "next-to-centers."

"GRIDIRON": So called from the appearance of the stripes of lime on the field. In 1906 the field was marked lengthwise as well, in five yard stripes, giving it the appearance of a checkerboard, but this system of marking was abolished in 1910, and the familiar "gridiron" returned.

UNIFORMS: Football players in 1876 wore "tights," but the forerunners of the present uniforms, canvas jackets and pants, appeared a couple of years later.

SHIFT: Originated in 1909 by Harry L. Williams, one-time Yale player, as coach at Minnesota.

NUMBERS: Introduced in 1915. They are now a compulsory part of the players' uniforms in many conferences; some even insist that numbers be worn front and back.

SCORING: The value of a touchdown was fixed at six points in 1912; the value of a field goal was set at three points in 1909. The value of a safety was established at two points in 1897, and a goal from touchdown valued at one point the same year. The score of a forfeited game, 1 to 0, was made a part of the rules in 1908.

"ELEVEN": The name is an outgrowth of the rules of 1880, which reduced the number of players from fifteen to eleven.

INTERFERENCE: Now called blocking, but originally called guarding. The original guarding, introduced in 1884, consisted of two players running on either side of the ball carrier, to make tackling from the side more difficult.

DOWNES: Established in 1882, replacing the former rule that the team in possession of the ball could retain it until it was lost by a fumble. The "downs and yards to go" principle has been modified several times, but the essential idea is the same as it was in 1882.

Be A Sportsman At All Games

AND TRADE AT

WID'S SPORTING GOODS SHOP

Phone 395



WHAT!!!! NO NEW RULES

A football season without new football rules is like apple pie without cheese, beer without pretzels or hot dogs without plenty of mustard, but here one is and there's nothing to argue about, unless it's the rules already in the book.

After a period of tinkering which began in 1929 with the famous "fumble rule" and ended last year with the changing of the dimensions of the ball, the Rules Committee last winter met, decided football was a pretty good game as played in 1934, made a few minor changes, and dispersed, receiving the congratulations of players, coaches and spectators.

What they did can be stated briefly. The most important alteration merely qualifies the so-called "dead ball" rule, making it permissible for a runner who is on his feet but held by an opponent, to run (if he can), or to pass or kick until the whistle is blown. That means that your favorite halfback has a little more chance to break away from a loose tackle, whereas under the former rule, the whistle

should and would be tooted as soon as his forward progress ceased.

The committee didn't say so, but it was evidently their hope that officials wouldn't be quite so quick with the whistle.

The other changes: Clarification of the rule governing the interchange of positions by linemen and backs by defining the positions of the center, guards and tackles as those occupied by those players when they originally enter the game. The rule by which fouls committed by both teams offset each other now includes one exception: "Should a punted ball be illegally downed and then there be a personal foul by the opponents, the kicking team may refuse the offsetting penalty. In such case the ball belongs to the receiving team at the spot where it was touched."

Now that you know all about the new rules, let's enjoy the game!

Meet Me at the
ROSE TREE BUFFET

TODAY'S GAME

By J. MURRAY

Coming from the coast with an impressive victory over "Dixie" Howell's Mexico University eleven, the Occidental college team offers much hard fighting, deceptive football. It appears from the accounts of the Mexico game that Oxy will find much use for Co-Captain Bob Cosby, quarterback, and Phil Lewis at left half.

Coach Bill Anderson of Occidental is a follower of the Schmidt-Zuppke style of "wide-open" football. Anderson's backfield will probably feature Cosby and Lewis, mentioned above, Ralph Nichols at right half and Jack Sheridan as fullback.

Coach Mark MacIntosh, Lumberjack mentor, has his choice in backfield material, both in power and speed.

The showing made by the Lumberjack squad against Adams State is not much of an indication of their possibilities against stiff competition. From all indications the

weight situation which was well in favor of the Arizona State team in the Adams game will be reversed when they face the heavier Oxy squad.

Oxy has in Ralph Nichols, 165 pound half-back, the Southern California Conference high hurdle champion. He is rated as Oxy's fastest backfield man. The Oxy line will show all Oxy veterans with Guy Nunn at center, Lin Howe and Dick Snyder at guards, Co-Captain Phil Gemmell and Henry Appy at tackles, and Ken Knudsen and Erny Naumann at the end positions.

From accounts of the showing against Mexico, Occidental should have a bag of tricks including some very snappy lateral and forward passing.

Bill Anderson, Oxy coach, is a graduate of Illinois State where he played football, basketball and baseball. Anderson then attended Illinois University where he played football for Bob Zuppke. He graduated from Illinois in 1917 and came to Occidental in 1925.

Today's game should show an evenly matched battle.

**ARROWHEAD
STATION**

●
Bill Caffey

FRANK'S PLACE

The Home Of
Old Mr. Boston

Fountain Service

MIDGLEY FOOD MARKET

Phone 575

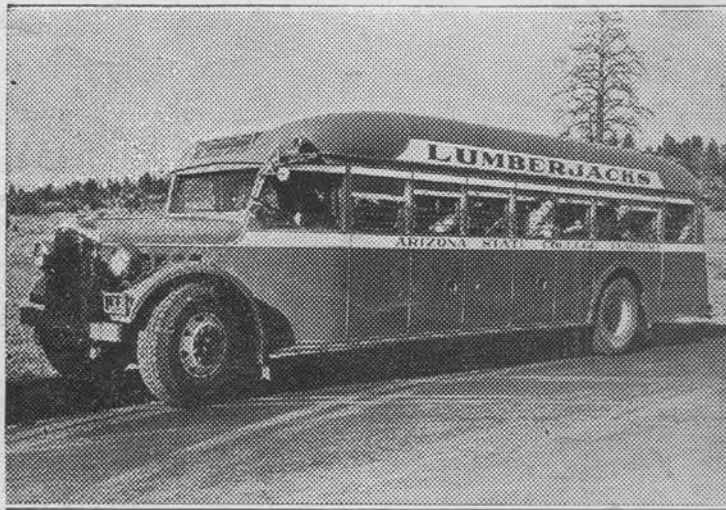
FREE DELIVERY

Before And After The Game Renew
Your Pep With A

DISH OF DELICIOUS
ZONACO ICE CREAM

ZONACO ICE CREAM CO.
Willard Mouritsen, Mgr.

Distributors
Sno Milk Mickey Freeze



"BLUE BOY"

When the Lumberjacks are in Phoenix

They Stay at

HOTEL ADAMS

MEET US THERE

Phoenix - - - - - Arizona

Lumberjack Coaches



MARK MacINTOSH
Head Coach



A. M. McCREARY
Frosh Coach

RADIOS—We Have Them
We Fix Them

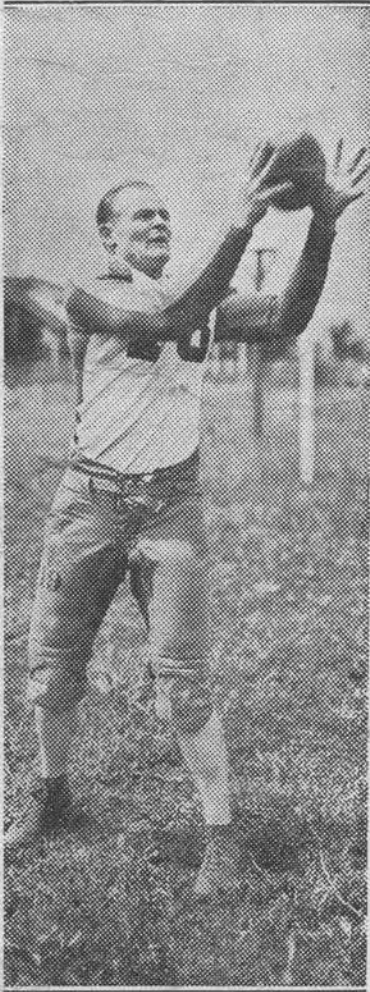
THE ART-MUSIC SHOP

SEE US—No. 6 North Leroux

Phone 233

A X E M E N

Lumberjack End



LEWIS (ELDER) PHELPS
Captain

Lumberjack Half



HEARTSILL KORNEGAY

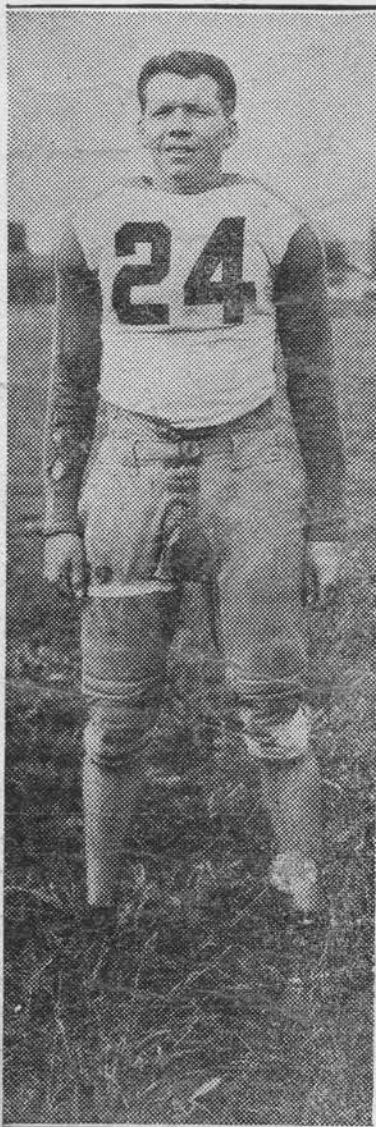
A X E M E N

Lumberjack Guard



DON CLARK

Lumberjack Center



JACK MILLER

Hit the line hard
and hit it square

Play the game
and play it fair

Crash right through—
do or die

You've got to be good
to SATISFY.

OCCIDENTAL SQUAD

Bill Anderson, Coach

No.	Name	Pos.	No.	Name	Pos.
32	Appy, C		43	Knudsen, E	
80	Bates, H		37	Lewis, H	
86	Bell, H		60	Lyons, F	
36	Benioff, F		65	Middleton, E	
82	Calvert, H		58	Moore, E	
84	Ch'mb'lain, G		34	Naumann, E	
35	Cosby, Q		38	Nichols, H	
39	Dunn, G		51	Nordvold, H	
46	Gemmell, T		44	Nunn, C	
63	Henderson, G		85	Powell, E	
66	Herrick, G		50	Punaro, H	
41	Howe, G		59	Reed, G	
71	Huddleston, H		54	Rejebian, H	
40	Hunt, T		53	Seekins, C	
47	Ingles, E		49	Sheridan, F	
45	Irish, T		69	Smith, T	
61	Jeffries, T		48	Snyder, G	
57	Johnson, T		88	Stierle, E	

LUMBERJACK SQUAD

Mark MacIntosh, Coach

No.	Name	Pos.	No.	Name	Pos.
19	Allred, H		18	Ljubicich, G	
70	Armstrong, H		22	Moreno, Q	
71	Billar, E		78	Manes, G	
76	Blair, C		23	Miller, C	
5	Brady, E		6	Nelson, G	
0	Catt, G		8	Nielson, H	
11	Chilton, H		4	Overson, H	
10	Chapman, H		14	Patterson, H	
77	Clark, G		79	Phelps, E	
75	Dunbar, E		12	Puente, E	
0	Davidson, G		73	Rogers, N, H	
9	Davenport, E		7	Rogers, C, H	
2	Emmett, H		16	Schweikart, C	
20	Echert, G		17	Stratton, G	
74	Glasson, C		0	Tonkins, H	
80	Homeyer, E		1	Tocco, Q	
24	Hudson, T		15	Tissaw, Q	
81	Hendricks, T		72	Verdugo, H	
3	Kornegay, Q		21	Wolf, T	

OFFICIALS

Olmstead Referee
 H. K. Mangum (Arizona) Umpire
 T. Knoles Head Linesman



Occidental College vs. Arizona State

Los Angeles

Flagstaff

PROBABLE STARTING LINEUPS (Subject to Change)

TIGERS		Position	LUMBERJACKS	
No.	Name		Name	No.
43	KNUDSEN	LER	PHELPS	79
46	GEMMEL	LTR	WOLF	21
48	SNYDER	LGR	CLARK	77
44	NUNN	C	GLASSON	74
41	HONE	RGL	NELSON	6
40	HUNT	RTL	PATTERSON	14
34	NAUMANN	REL	BRADY	5
35	COSBY	Q	KORNEGAY	3
37	LEWIS	LHR	VERDUGO	72
38	NICHOLS	RHL	TOCCO	1
49	SHERIDAN	F	N. ROGERS	73

Score	1	2	3	4	Total
LUMBERJACKS					
TIGERS					

64



TIGERS

Tiger Coach



BILL ANDERSON

Tiger Guard



WM. HOWE

Tiger Tackle



CO-CAPTAIN GEMMEL

Buy At
NACKARD'S
READY-TO-WEAR

●
"Proved Best For Less"

MILK DEPOT

Milk — Cream — Ice Cream
Fountain Service

PHONE 255

22 North San Francisco Street

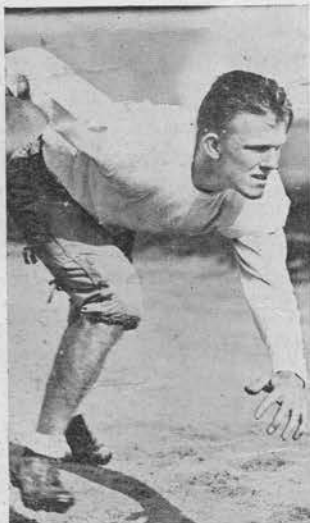
DD Bootery
Flagstaff's
EXCLUSIVE
SHOE STORE
SOMETHING NEW EACH DAY

**WEBBER BROTHERS
SERVICE STATION**

STANDARD PRODUCTS
TIRE AND BATTERY SERVICE

Phone 10

Oxy Quarter



CO-CAPT. BOB COSBY

Oxy Halfback



PHIL LEWIS

**WILSON-COFFIN
SERVICE STATION**

*Plymouth
and
DeSoto*

"SERVICE WITH A SMILE"

LIGHTNING DELIVERY

*Baggage Heavy Hauling
Storage and Crating*

13 North Leroux Phones—165, 261

FLAGSTAFF

Black Cat Cafe

FLAGSTAFF,
ARIZONA

OCCIDENTAL COLLEGE FOOTBALL ROSTER

Bill Anderson, Head Coach

Chas. Roy Dennis, Asst. Coach

No.	Name	Pos.	Wt.	Ht.	From	Yrs. Exp.	Class
32	Appy, Henri	Center	165	6'	Citrus J. C.	JC	Junior
80	Bates, Fred	Half	162	5'10"	Carpenteria	2	Senior
86	Bell, Gene	Half	180	5'10"	Riverside J. C.	JC	Junior
36	Benioff, Dave	Fullback	180	5'8"	Belmont	Fr.	Junior
82	Calvert, Ira	Half	143	5'5½"	Citrus J. C.	JC	Senior
84	Chamberlain, Dave	Guard	169	5'10"	Alhambra	Fr	Soph.
35	Cosby, Bob	Quarter	185	5'10"	Compton J. C.	1*	Senior
39	Dunn, Richard	Guard	185	6'	Van Nuys		Soph.
46	Gemmell, Phil	Tackle	202	6'1"	Pomona	2*	Senior
63	Henderson, John	Guard	160	6'½"	Santa Ana J. C.	JC	Junior
66	Herrick, Bob	Guard	175	5'11"	Alhambra	2	Senior
41	Howe, Lin	Guard	190	6'	Long Beach	2*	Senior
71	Huddleston, Rex	Half	166	5'11"	Brea Linda	Fr	Soph.
40	Hunt, Horace	Tackle	180	6'2"	Banning	2	Senior
47	Ingles, George	End	172	6'	Franklin	Fr	Soph.
45	Irish, Bill	Tackle	191	6'1"	Hoover	Fr	Soph.
61	Jeffries, Dan	Tackle	180	6'	Santa Monica J. C.	JC	Junior
57	Johnson, John	Tackle	185	6'1"	Franklin	Fr	Soph.
43	Knudsen, Ken	End	170	6'2"	Van Nuys	2	Senior
37	Lewis, Phil	Half	160	5'7"	Glendale J. C.	1*	Senior
60	Lyons, Herschel	Fullback	183	5'11"	Washington	1	Junior
65	Middleton, Walt	End	169	5'10"	Long Beach J. C.	JC	Soph.
58	Moore, William	End	180	6'	San Pedro	Fr	Soph.
34	Naumann, Ernie	End	165	6'1"	Belmont	2	Senior
38	Nichols, Ralph	Half	165	5'11"	Glendale J. C.	1*	Senior
51	Nordvold, Don	Half	165	5'10"	Van Nuys		Junior
44	Nunn, Guy	Center	194	6'	Franklin	1*	Junior
85	Powell, Jack	End	160	5'11"	Black Foxe	1	Junior
50	Punaro, Ernie	Half	155	5'8"	Belmont	1	Junior
59	Reed, Laurence	Guard	195	5'11"	Nordhoff	2	Senior
54	Rejebian, Aram	Half	150	5'8"	Pasadena J. C.		Soph.
53	Seekins, Charles	Center	145	5'8"	Van Nuys	Fr	Soph.
49	Sheridan, Jack	Fullback	170	5'10"	Cumnock	1*	Senior
69	Smith, Walt	Tackle	175	6'1"	Ventura J. C.	JC	Junior
48	Snyder, Dick	Guard	175	5'11"	Washington	2*	Senior
88	Stierle, Carl	End	159	6'	Belmont	Fr.	Soph.

Fr—Frosh

*—Letters earned

DUBEAU'S MOTEL INN

Steam Heat — Every Room With Bath

COLLEGE INN

Lumberjack Headquarters

PAT PATTERSON AND THE BOYS

LUMBERJACK 1935 FOOTBALL ROSTER

Mark MacIntosh, Head Coach

Bill Lutz, Asst. Coach

No.	Name	Pos.	Age	Wt.	Home	Yrs. Exp.
19	Allred, Lamar	Half	20	160	Safford	Fr.
70	Armstrong, Bill	Half	22	145	Phoenix	*
71	Billar, Harry	End	22	160	Inglewood, Calif.	Fr.
76	Blair, Jack	Center	19	155	Bisbee	Fr.
5	Brady, Tom	End	21	160	Douglas	*
	Catt, Charles	Guard	23	180	Ft. Scott, Kan.	Fr.
11	Chilton, Kenneth	Half	19	160	Miami	Fr.
10	Chapman, Francis	Half	22	160	Phoenix	Fr.
77	Clark, Don	Guard	22	180	Redlands, Calif.	*
75	Dunbar, Jim	End	20	180	Bisbee	*
	Davidson, Jerry	Guard	22	170	Los Angeles, Calif.	Fr.
9	Davenport, Richard	End	22	160	Jerome	Sq.
2	Emmett, Cecil	Half	23	145	Prescott	Fr.
20	Echert, E.	Guard	20	212	Prescott	Sq.
74	Glasson, Joe	Center	22	177	Bisbee	*
80	Homeyer, George	End	22	158	Chicago, Ill.	JC
24	Hudson, E.	Tackle	21	204	Chandler	Sq.
81	Hendricks, Lloyd	Tackle	20	180	Miami	Fr.
3	Kornegay, H.	Quarter	21	160	Yuma	*
18	Ljubicich, Tony	Guard	19	180	Miami	Fr.
22	Moreno, E.	Quarter	21	185	Morenci	Fr.
78	Manes, Bill	Guard	21	185	Globe	Fr.
23	Miller, Jack	Center	22	170	Miami	*
6	Nelson, Walter	Guard	20	179	Winslow	*
8	Nielson, K.	Half	18	180	Snow Town, Utah	JC
4	Overson, Alvin	Half	22	170	St. Johns	Sq.
14	Patterson, Jim	Half	19	190	Peoria	Fr.
79	Phelps, Lewis	End	22	190	Mesa	**
12	Puente, M.	End	23	160	Miami	*
73	Rogers, Ned	Half	22	180	Jerome	Fr.
7	Rogers, Carl	Half	25	180	Flagstaff	Fr.
16	Schweikart, Willy	Center	22	170	Buckeye	Fr.
17	Stratton, Clifford	Guard	21	183	Hendley, Utah	*
	Tonkins, James	Half	23	170	Morenci	Fr.
1	Tocco, Walter	Quarter	20	145	Miami	*
15	Tissaw, Joe	Quarter	19	157	Flagstac	Fr.
72	Verdugo, T.	Half	20	170	Jerome	Fr.
21	Wolf, Andy	Tackle	22	196	Kingman	*

Fr.—Frosh Sq.—Squad JC—Junior College *—Letters Earned

Get Your **INDIAN HANDICRAFT** In the Indian Country

NAVAJO RUGS

INDIAN JEWELRY

ARIZONA SOUVENIRS

NAVAJO-HOPI TRADING CO.

Opposite Depot

Visit
CARSON STUDIO
And See
ARIZONA IN PICTURES

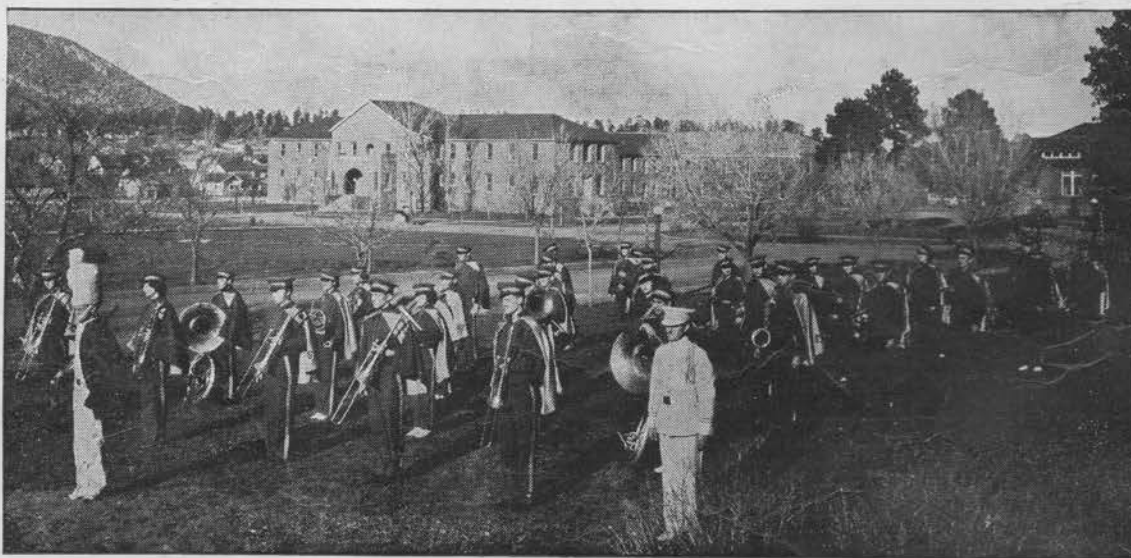
Flagstaff, Arizona

**E. D. BABBITT
MOTOR CO.**



Goodyear Tires

Phone 26



LUMBERJACK BAND

**MAXWELL'S
NEWSSTAND**

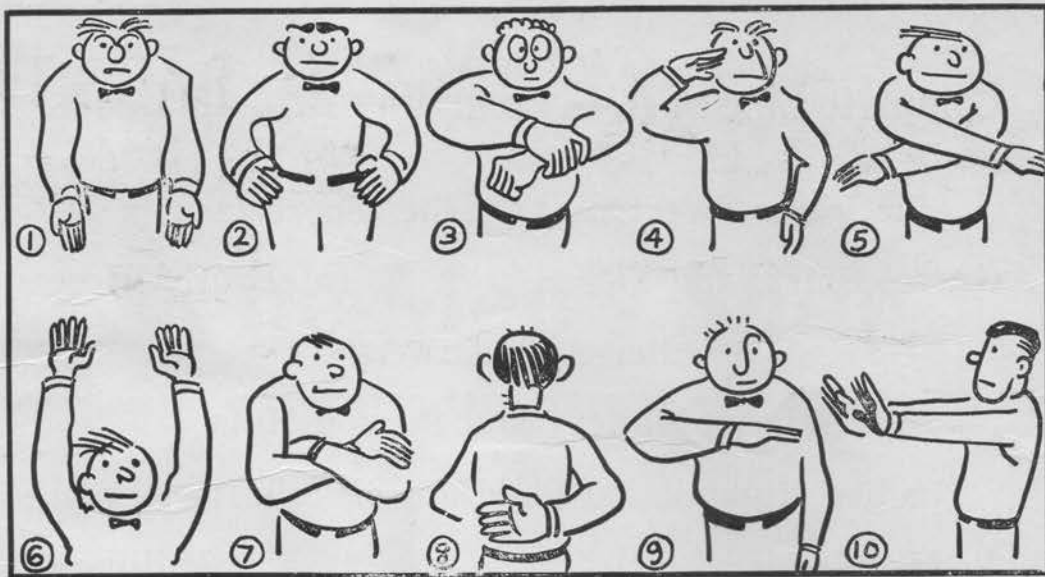
CIGARS CIGARETTES
TOBACCO
MAGAZINES NEWSPAPERS
CANDY
TAXI SERVICE

**AMERICAN STEAM
LAUNDRY**

*Best Of Work
At Best Of Prices*

Representatives

HARRY BILLER CARL ROGERS
MERRIAM WELTER



OFFICIALS' SIGNALS

WHEN THE umpire jerks his thumb back over his shoulder, you know that the runner is out. That baseball signal is probably the most familiar gesture in sport.

But do you know the football signals? Probably not, because they are, as far as spectators are concerned, comparatively new. Study them as they are sketched in the accompanying panel, and they will increase your enjoyment of the game. The signals illustrated here are the most commonly accepted signals now in use.

Fig. 1—Pushing movement of hands to front, with arms hanging downward: Signal for penalty for crawling, pushing or helping the ball carrier.

Fig. 2—Hands on hips: Signals penalty for off-side or for illegal kick-off formation.

Fig. 3—Grasping of one wrist: Signals penalty for holding.

Fig. 4—Military salute: Indicates penalty for unnecessary roughness.

Fig. 5—Shifting of hands in horizontal plane: Signals penalty has been refused, an incomplete pass, missed goal, or that the play is to be re-played.

Fig. 6—Both arms extended above head: A score; if the palms of the hands are brought together, a safety is indicated. If the hands are shifted in a vertical plane above the head: time out.

Fig. 7—Folded arms: Flying block or tackle.

Fig. 8—Waving hand behind back: Signals penalty for illegal forward pass.

Fig. 9—Horizontal arc of either hand: Signals player illegally in motion.

Fig. 10—Pushing hands forward from shoulders with hands vertical: Signals penalty for interference with forward pass, also a pass which touches a player ineligible to receive it.

TISSAW'S ELECTRIC SHOP

WIRING AND REPAIRING

Fixtures And Supplies

PHONE 118

SUCCESSFUL SEASON, LUMBERJACKS!

Complete Line of A. G. Spaulding Athletic Goods

McGregor Sweaters Leather Sport Jackets

Grayco Shirts and Ties Interwoven Hose

Allen-A Underwear

Wilson, Mallory and Stetson Hats

Ladies' Hummingbird and Rollins Silk Hosiery

Ready-to-Wear

Millinery

Friendly Shoes

Florsheim Shoes

Babbitts
ESTABLISHED 1889

SONGS AND YELLS

ALMA MATER

Hail! Alma Mater
A. S. T. C.
Thy name forever
A guiding light will be.
Strong as the pine trees
Our love will never fail
We love you Alma Mater
Hail! Hail! Hail!

LUMBERJACK SWING

Oh—When—Those Lumberjacks all
fall in line,
We're going to win a victory for
another time,
We're—going to make those touch-
downs every time,
We're going to Fight! Fight! Fight
for every yard we make.
We're going to show them what
real sports are like
We're going to fight hard! Play
hard! All the time.
And when the whistle blows for
the game to stop
Who'll be on top? A. S. T. C.

VICTORY SONG

Break that line you Lumberjacks
Keep in mind A. S. T. C.
Take your time you Lumberjacks
Watch the ball boys.
Fight! Fight! Fight! Fight!
We can see a victory.
Play the game, your fame is won,
And when the game is through
Victory A. S. T. C.
We'll all be proud of you.

LOCOMOTIVE

A—S—T—C (whistle) Rah
A—S—T—C (whistle) Rah
A—S—T—C (whistle) Rah
Arizona State
Team—Team—Team

GO LUMBERJACKS

Go—Lumberjacks
Go—Lumberjacks
Go—Lumberjacks
Lumberjacks—Varsity
GO!

GIVE 'EM THE AXE

Give 'em—the—axe—the—axe—the
axe,
Give 'em—the—axe—the—axe—
where
Right—in the neck—the neck—the
neck
Right—in the neck—the neck—
there
(Repeat faster)
Lum-ber-jacks!

YEA TEAM

Yea—Team
Yea—Team
Fight—Fight—Fight!
BLUE GOLD
Fight hold—Blue gold
Lumberjacks
Fight hold—Blue gold
Lumberjacks
Fight.

For Something New . . .

Come To

The Men's Shop

. . . Headquarters for . . .

CORRECT
COLLEGE
CLOTHES

NO. 1 ASPEN AVENUE

Bob Bledsoe

Wm. Durkovich

SPROUSE-REITZ CO.
INC.

5-10-15c Store

*Nothing
Over
49c*

*Get Out The Axe
We Are For You . . .*

Jack's Auto Repair Shop

AUTHORIZED HUDSON
TERRAPLANE AND
NASH SERVICE

PHONE 7

Flagstaff Pharmacy

The Complete Drug Store

Try Our Fountain Service

Opposite Depot

Always a Good Show at the
Orpheum and Liberty Theatres

The very best in feature pictures from Metro-Goldwyn-Mayer, Warner Bros., Paramount, 20th Century, Fox and RKO Distributing Corporation.

ARTHUR MAXEMIN, Mgr.



**Safeway Pay'n Takit
Stores**

ARIZONA GROCERY CO.



ELECTRICITY

Is Your Willing and Obedient

SERVANT



Who Does Not Sleep, Shirk or Complain

**FLAGSTAFF ELECTRIC
LIGHT COMPANY**

Lights — Power — Cooking — Heating