

Price \$1.00

1974

Northern Arizona University

the college
GAME

Press - Yearbook

75th Anniversary Souvenir



Aerial view of stadium from 1974, courtesy of Game Yearbook

LUMBERJACK FOOTBALL COACHING STAFF

Facing rough opposition is something Ed Peasley has done all of his football days as a player and coach and the 1974 season at Northern Arizona University will be no different for Peasley who is in his fourth year as head coach of the Lumberjacks.

NAU's 1974 schedule calls for the Lumberjacks to meet six teams which were nationally ranked a year ago plus two additional ones from major college conferences.

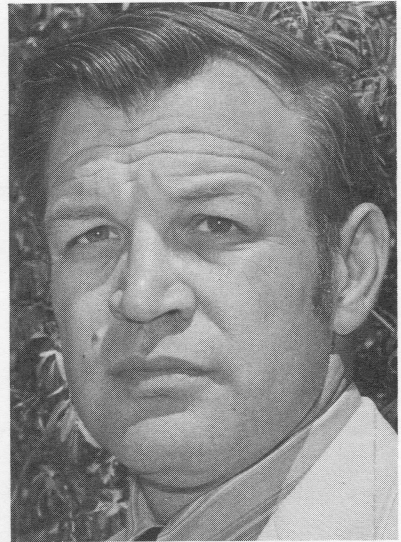
The 39-year old Peasley coached the linebackers at Stanford before coming to NAU and his recruiting and coaching were instrumental in the Cardinals springing a pair of back-to-back up-sets in the Rose Bowl. Stanford's 1969 team beat Ohio State, 27-17, in the 1970 Rose Bowl then a year later Stanford upended Michigan, 13-12, in the West Coast Classic.

Building a solid program has been Peasley long range goal at NAU and results of his building will start to show this fall as several of the freshmen his staff recruited will be seeking their fourth varsity letter and 12 second-year players who started a year ago as freshmen will be seeing a lot of playing time this fall. Walk-ons always have had a chance to play at NAU since Peasley has been at the helm and he expects several walk-on athletes from the freshman class once school begins this fall.

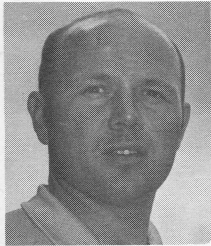
After graduation from Mendota, Ill., High Peasley entered the Marines and was a member of the 11th Naval championship teams at Camp Pendleton in 1955-56. In high school he lettered three times each in football, basketball and track.

He spent his freshman year in college at Compton College and played in the Little Rose Bowl then he went to the University of Washington where he played in two Rose Bowls for the Huskies in the late 1950's.

Peasley and his wife, Eleanor, have two daughters, ages 10 and 11.



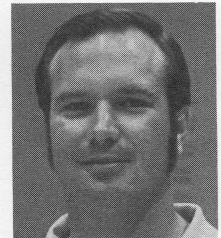
ED PEASLEY
Head Coach



MIKE CHURCHILL

MIKE CHURCHILL—This will be Mike's first year with the Lumberjacks, having joined the football staff in time for spring practice. The 28-year old Churchill will be working with the NAU offensive backs and receivers and he has plans on expanding the Lumberjack attack. Last year he was an assistant coach at Royal High in Simi, Calif., and prior to that he was head coach and athletic director at Damien High in LaVerne, Calif., for four seasons. A graduate of Pomona Catholic High, and LaVerne College. (1967). Teams he's coached have been 37-18-1 — his head coaching mark is 25-12.

NORMAN (NORM) DOW—Now in his second year at NAU, Norm will be working with the Linebackers this fall. Before coming to NAU, Dow was an assistant at University of Wisconsin for three years and prior to that he was on the UCLA staff for two seasons. He earned his bachelor's degree from UCLA (1967) in geography. A quarterback at UCLA, Dow led the Bruins to a stunning 14-7 upset of USC in 1966 when Heisman Trophy winner Gary Beban watched from the bench Dow personally accounted for 82 yards in the two scoring drives. His 1968-69 UCLA frosh teams were 10-2. An all-round athlete at North Torrance, California High.



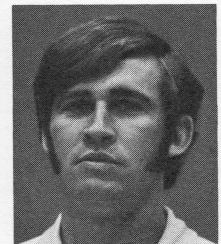
NORM DOW



SCOTT SCHUHMON

SCOTT SCHUHMANN — This will be Scott's sixth year with Lumberjack football and the former All Missouri Valley Conference defensive end has turned in a fine job in preparing his offensive line to meet some of the most rugged opposition from the nation's top Division II teams. Schuhmann spent one year as a graduate assistant at NAU and has been a full-time coach the past four seasons. A knowledgeable coach and talented recruiter, Schuhmann has helped in bringing young talent to the NAU campus. While playing at Tulsa University, Schuhmann was a vital member of the Hurricane teams which made back-to-back appearances in the Astro-Bluebonnet Bowl in 1965 and 1966.

AL WORLEY—Worley and O. J. Simpson both have something in common—both were consensus All-American players in 1968—Simpson of course with USC and Worley was at the University of Washington where he was named the school's "Athlete of the Year." Worley will be entering his fourth season as defensive back coach at NAU and his experience has been a big plus in building up the Lumberjack secondary. Worley played his freshman football at Washington under Peasley and from that first year, he went on to become one of the Huskies top players in history. Played in Hula Bowl, East-West game and Coaches All-America Game at the conclusion of his senior year.



AL WORLEY



ALL BIG SKY FOOTBALL PLAYERS FROM NAU

1973: Jimmy Smith (halfback) first team; Tim Sanford (guard); Ed Jones (defensive back); and Randy Spilsbury (defensive back) honorable mention.

1972: Minford Suida (fullback) first team; Rufus Mullen (cornerback) first team; Tom Ramsey (defensive end) second team; Bruce Ivor (defensive tackle) second team.

1971: John Nuttall (guard) second team; Danny White (halfback) second team; Walt Mannon (split end); Dick Baserman (flanker); Jim Volpe (offensive tackle); Tom Ramsey (defensive tackle); Rufus Mullen (defensive back); Mike Boettcher (linebacker); all honorable mention.

1970: Mike Boettcher (linebacker) first team; Doug Barr (offensive tackle); John Nichols (offensive tackle); Bill Tate (fullback); Steve Maier (wide receiver); and Jim Bennett (defensive back); all honorable mention.

McGrew PRINTING & LITHOGRAPHING CO.

Serving Arizona Continuously Since 1890 With The Best In

PRINTING - BINDING - ENGRAVING - RULING - LITHOGRAPHING

601 East Adams Street

PHOENIX, ARIZONA 85004

Phone 254-4768



1974 NAU PLAYER SKETCHES



EDDIE ABEL



KENNY ALLEN



CHUCK APT



PAUL ARSLANIAN



JIM BAKER



RANDY BERRY

EDDIE ABEL, 6-7, 240 Junior Defensive Tackle from Globe, Ariz. — a transfer from Eastern Arizona JC who showed improvement in spring drills and should add depth to the Lumberjack defensive line.

KENNY ALLEN, 6-3, 225-pound senior tight end who possess outstanding all around tight end talent — can block, catch the ball, and should be one of the premier tight ends in the Big Sky this fall. Caught 16 passes for 125 yards last fall.

CHUCK APT, 6-2 190-pound junior defensive back who gained much valuable game experinece last fall and continued to show improvement in the spring — should push for a starting job this fall.

PAUL ARSLANIAN, 5-11, 170-pound senior defensive back who saw action last fall and showed marked improvement in the spring — should add strength to the NAU secondary. Father is head coach at Colorado State.

JIM BAKER, 5-11, 215-pound junior fullback from Globe, Ariz., who transferred from Mesa, Ariz., CC where he was a standout on Mesa's national juco championship team last fall. Moved from tailback to fullback in the spring and appears to have found a home.

PAUL BERLIN, 6-3, 215-pound junior tight end who caught 29 passes last fall at Laney, Calif., JC. Adds much depth at tight end along with Kenny Allen and Bob Tagye.

RANDY BERRY, 6-1; 190-pound sophmore quarterback who gained much valuable experience in the spring and all he needs is game experience to be a real good college quarterback. Led Arvada, Colo., West High to 38-0 record in high school and quarterback Colorado North All-Stars to 39-6 win in 1973 All-Star game.

MARK BLANKENSHIP, 5-11, 225-pound freshman defensive tackle who played at Antelope Valley, Calif., High for former Lumberjack John Lowery. Should see a lot of action this fall as a frosh.



CHARLES BRUNK



RICH CARLBERG



ERIC DAYS



JIM DEARING



DENNIS DIXON



PAUL EDGE

CHARLES BRUNK, 6-2, 230-pound sophomore guard who is coming off a redshirt year. Earned starting job in spring football and is one of NAU's quicker offensive linemen. Will face some stiff competition to keep his starting job this fall.

RICH CARLBERG, 6-1, 190-pound senior wide receiver who is a two-year veteran. Caught 8 passes for 70 yards last fall and should see a lot of action this fall. Is from Benson, Ariz.

ROSS CHAMBERLIN, 6-2, 235-pounld quard who transferred from Menlo, Calif., JC where he was a two-year starter. Winning experience should be a big help for NAU's offensive line and he could be the swing man at either guard or tackle.

ROBERT CRIST, 6-2, 225-pound freshman linebacker from Danny Murphy High in Hollywood, Calif., who has great size and potential. Should develop into an outstanding player in the future.

JERRY DAVIS, 6-0, 175-pound junior tailback from Glendale, Ariz., JC who has fine quickness and is a good receiver. He should fit well into the Lumberjack offensive plans.

ERIC DAYS, 6-1, 185-pound junior tailbeck comes to NAU with great credentials from San Francisco City College where he established himself as a runner and receiver. His great manuverability and quickness to the outside. Looked good in the spring and NAU foes should have trouble stopping him.

JIM DEARING, 6-0, 175-pound sophomore defensive back from Phoenix' Cortez High who is a fine trackman in addition to his football ability. Lettered last fall as a frosh as a wide receiver and made switch in spring ball to the defensive side where he showed themost consistent receiver in spring drills. Good speed and hard he has the speed to play defense.

DENNIS DIXON, 6-0, 170-pound junior flanker who proved to be the most consistent receiver in spring drills. Good speed and hard work could make him a starter.

PAUL EDGE, 6-2, 220-pound senior linebacker who redshirted last fall and used the year off to work with weights and has greatly improved strength and the NAU foes should find him hard to move this fall.

1974 NAU PLAYER SKETCHES



RANDY FERRELL



DOUG HACKETT



TERRY HOERNER



RICK HOWARD



GILBERT HUERTA



BRUCE IVOR

RANDY FERRELL, 5-11, 180-pound junior defensive back who has fine over all athletic ability. Had good spring and with more experience could be a key in NAU's defensive backfield this fall.

DOUG HACKETT, 5-9, 165-pound sophomore defensive back from Cottonwood. Played at Mingus Union High and is one of the hardest working defensive backs on the NAU team.

RICK HOWARD, 6-0, 190-pound tailback from Santa Cruz Union High in Eloy. Played at Arizona Western JC and is one of the hardest running backs on the NAU team — should see a lot of action this fall.

GILBERT HUERTA, 6-2, 235-pound guard from Tucson's Palo Verde High who spent the past two seasons as a starter for Arizona Western. Always has been a starter and could well find himself in a strating role for NAU this fall.

BRUCE IVOR, 6-3, 235-pound senior defensive tackle from Phoenix Central High whowill be looking for his fourth varsity letter. Earned second-team All Big Sky as a sophomore. Has always been a marked man on opponent's scouting sheets and could have the best season of his career this fall.

TODD JOHN, 6-4, 235-pound junior defensive end from Benson, Ariz. Is coming off successful foot operation and switched from tight end to defensive end in spring and add depth to that position.

GEORGE KAGELE, 6-2, 237-pound senior defensive tackle from Prescott — earned a starting job in spring drills. If he is as competitive this fall as he was in spring, he should fight off the opposition well.

MIKE LARSON, 6-5, 242-pound sophomore defensive tackle from Phoenix who redshirted last fall after transferring from BYU. Could see action at either offensive or defensive side of the line.

MIKE LEITLE, 5-11, 180-pound junior defensive back who is a transfer from Northeastern, Okla., JC where he was an outstanding player the past two seasons. Could be a key in NAU's secondary this fall.

ROCKY LOYCE, 6-3, 190-pound senior flanker who ranked among the Big Sky Conference leaders in average yards per catch last fall. Caught 15 passes for 244 yards and had a fine game against Boise State. Played defensive back until switching last fall and missed a few games with injury.



BOB JAMES



TODD JOHN



GEORGE KAGELE



MIKE LARSON



ROCKY LOYCE



ZEPHERY MCKENZIE

MIKE MAUGER, 6-2, 218-pound junior linebacker who is a transfer from San Diego JC where he was a starter and consistent player. Should push hard for a starting role this fall.

ZEPHERY MCKENZIE, 6-3, 235-pound junior defensive end who transferred from Cuesta, Calif., JC. Showed sparks of having great ability in spring drills and by becoming more consistent, he could be one of the top defensive linemen in the Big Sky

DAVE MENDEZ, 5-10, 190-pound senior quarterback from Mesa CC. Ranked as the fourth best passer in the nation (Division II) last fall when he was injured. Outstanding leadership ability is a big plus. Was second-team All-American at Mesa in 1972 and is a product of Mesa Westwood High.

CHRIS MINOR, 6-3, 230-pound sophomore defensive end. Lettered as a frosh at tight end then switched to defense in spring drills and quickly earned a starting job. If he shows continued improvement, he could be a fixture in NAU's defensive front the next three seasons.

BILL PALMER, 6-3, 230-pound junior defensive tackle from Southwestern JC in San Diego where he was a consistent player. Should give NAU's defensive front a big boost this fall.

WILLIE PRINGLE, 6-2, 215-pound senior linebacker who has one of the most competitive attitudes on the NAU team. Started all last fall for NAU and had a great spring. Has a wide range, perhaps more than any other Big Sky linebacker. A very consistent performer.

GILBERT RAMOS, 6-3, 235-pound senior offensive tackle from Tucson High who is seeking his fourth varsity letter. Over the past three years he has played opposite some of the best defensive linemen the Division II ranks has had to offer — in fact, he's played head-up against no fewer than eight players who have earned All-American honors.

KEVIN RILEY, 6-0, 170-pound junior split end who was highly recruited out of Southwestern JC in San Diego where he caught 30 passes for eight TD's last fall. Has found a home at NAU and could well be one of the top receivers in the Big Sky over the next two seasons. Great ability.



YOST AWARD WINNERS

YOST AWARD — Howard Yost, right, of Flagstaff, established the John G. Yost, Jr., award in 1946 in honor of his brother who lost his life in World War I. Frank Brickey, left, head coach at NAU in 1946 and Francis Osborn, Faculty Athletic Chairman the year the award was established, look over the award. Yost was a member of the 1916 NAU team and Howard, a 1938 NAU graduate, has honored his brother's memory the past 28 years.

1946 Bill Johnson	Guard	1960 Alex Amado	Tackle
1947 Vincent Cisterna	End	1961 Lanny Westbrook	Guard
1948 Vincent Cisterna	End	1962 Lanny Westbrook	Guard
1949 Vincent Cisterna	End	1963 Rex Mirich	Def. Tackle
1950 Marlin Spaw	Tackle	1964 Charles Harvell	Center
1951 Jess Sanchez	Tackle	1965 Bill Shorty	Def. End
1952 Frank Gomez	End	1966 Dick Ries	Linebacker
1953 Darrell Miller	End	1967 Bud Weidoff	D End
1954 Manuel Leyva	Tackle	1968 Mark Lomas	D End
1955 Manuel Leyva	Tackle	1969 Tom Anderson	D End
1956 Jim Taylor	Guard	1970 Dick Baserman	End
1957 Glen Morgan	Off. Tackle	1971 John Nuttal	Guard
1958 Hosie Maddox	Off. Tackle	1972 Joe Sanchez	Center
1959 Mel Huffaker	Linebacker	1973 Tim Sanford	Guard

**THE NEW TREND SHOP
FOR GUYS and GALS**

**Babbitt's
britches**

10 3/4 EAST ASPEN . . . DOWNTOWN FLAGSTAFF

1974 NAU PLAYER SKETCHES



DAVE MENDEZ



CHRIS MINOR



BILL PALMER



WILLIE PRINGLE



GILBERT RAMOS



KEVIN RILEY

OLEN ROBERSON, 6-0, 210-pound sophomore center who switched from linbacker in spring. Should continue to improve and will add depth.

BRAD ROYSE, 5-8, 180-pound sophomore tailback who is coming off redshirt year. An outstanding spring practice and was a top player in the spring game. Will push for starting job. Is Tempe High graduate.

BILL RUDOLPH, 6-1, 220-pound junior guard who started all last season. A hard worker and with last year's experience, should be one of NAU's top lineemen the next two seasons.

DOUG SCHRINER, 6-0, 185-pound junior defensive back who started for Mesa, Ariz., JC's national champs last fall. Has picked up NAU's defensivesystem well and should be a steady performer.

STEVE SCOTT, 6-3, 230-pound freshman defensive tackle who was one of the highest regarded linemen from the San Gabriel Valley last fall. Was most valuable linemen at Cresenta Valley All-Star game.

RANDY SPILSBURY, 6-2, 185-pound junior defensive back from Casa Grande. One of the best all around athletes on the team — played two years of basketball and was a two-year letterman in track before turning to football last fall after a layoff of three years. Earned All Big Sky honors last fall. Should be one of the best in the Big Sky this fall.

DAN STICKLER, 6-4, 235-pound freshman offensive tackle from Apollo High in Phoenix where he was an outstanding football player and wrestler. Won Skyline Conference heavyweight title and finished second in the state. With maturity could be an outstanding player. Should see action as a frosh.



OLEN ROBERSON



BRAD ROYSE



BILL RUDOLPH



DOUG SCHRINER



RANDY SPILSBURY



BOB TAGYE

BOB TAGYE, 6-5, 220-pound junior tight end from Chula Vista, Calif., who was all CIF in football, basketball and baseball in high school. A big target for NAU quarterbacks and he should push for a starting job.

RICHARD TERRY, 6-2, 215-pound junior defensive end. Was the No. 2 punter in the Big Sky last year as a sophomore with a 40.1 average. Showed big improvement in his defensive play in spring drills.

DAN TROUPE, 6-6, 185-pound freshman quarterback from Huntington Beach, Calif., where he passed for more than 1,800 yards in nine games last fall against tough 4-A competition — has the tools to be a great one.

BILLY WAGNER, 5-11, 210-pound senior linebacker from Tucson Salpointe High who is after his fourth varsity letter. Wagner is coming off a broken arm suffered in spring drills but should come back strong for another fine season.

JERRY WALLACE, 5-11, 210-pound sophomore fullback who lettered lastfall as a freshman. Gained 267 yards on 26 carries last fall and scored twice on long runs. Tough to bring dawn and is a fierce blocker. Showed improvement in spring drills and could be the top sophomore back in the Big Sky this fall.

JOHN WALTON, 6-2, 190-pound freshman flanker from Phoenix' Cortez High where he was one of Arizona's most feared prep receivers last fall. Can find the opening in enemy defenses quickly and can run extremely well once he has caught the ball. Should see action as a frosh.

ALAN WARZECHA, 6-2, 220-pound junior guard-tackle who lettered last fall as a sophomore. Was a swing man at guard and tackle in spring and has thee versatility and ability to do a good job.

ROY WEBSTER, 6-3, 236-pound junior defensive tackle from Fremont, Calif., where he played both offense and defense in junior college. Possesses outstanding ability and should see action in NAU's defensive front.

JIM WILTJER, 6-4, 235-pound junior offensive tackle from Foothill, Calif., JC. Has size and quickness to open holes in opponent's defensive front.

RANDY WOODARD, 5-11, 165-pound junior defensive back from Phoenix. A hard worker who should add depth to NAU's defensive secondary.



RICHARD TERRY



JERRY WALLACE



ALAN WARZECHA



RANDY WOODARD

NAU'S ALL-TIME FOOTBALL RECORD

TEAM	W	L	T	TEAM	W	L	T
Adams State	5	3	0	New Mexico State	6	17	1
Arizona	1	5	0	Northwestern Oklahoma	0	1	0
Arizona State	13	16	4	North Dakota	1	0	0
Boise State	0	3	0	North Dakota State	0	3	0
BYU	0	2	0	Northern Illinois	1	0	0
Cal State-Los Angeles	2	0	0	Occidental	0	0	1
Cal State-Long Beach	3	3	0	Panhandle, Okla.	6	3	0
Cal State-Northridge	3	1	0	Pepperdine	0	5	0
Cal State-Pomona	9	3	2	Phoenix All-Stars	1	0	0
Cal State-San Francisco	1	0	0	Phoenix College	2	4	1
Cal State-San Luis Obispo	3	0	0	Phoenix Indian School	2	0	1
California Tech	4	1	0	Phoenix Union High	1	1	0
Central Missouri	1	0	0	Prescott Athletic Club	1	0	0
Chico State	2	0	0	Prescott High School	2	5	1
China Lake Navy	1	0	0	Quantico Marines	1	0	0
Colorado State	1	0	0	Redlands University	10	2	1
Compton College	1	0	0	Round Valley High	2	0	0
Douglas Air Base	1	0	0	San Diego Marines	1	1	0
Drake University	0	3	0	San Diego State	0	2	0
Eastern Arizona JC	3	0	0	San Jose State	0	2	0
East Central Oklahoma	0	1	0	San Pedro Athletic Club	1	0	0
Eastern New Mexico	9	7	0	Santa Clara Univ.	0	2	0
Emerson School	1	0	0	Smoki Athletic Club	1	0	0
Flagstaff All-Stars	1	0	0	Southern Oregon Univ.	2	0	0
Flagstaff High School	1	1	0	St. Johns High School	1	0	0
Flagstaff Redskins	1	0	0	Texas Lutheran	1	0	0
Fresno State	1	6	2	Texas Tech	0	2	0
Ft. Hays State	0	1	0	Trinity, Tex., Univ.	0	0	0
Ft. Huachuca Army	2	0	0	Tonapah Air Base	1	0	0
Ft. Lewis College	1	0	0	Univ. Cal-Riverside	1	1	0
Gustavus-Adolphus	1	0	0	Univ. Cal-Santa Barbara	1	0	0
Hawaii	0	1	0	Univ. Northern Colorado	2	0	0
Hiram Scott	1	0	0	U. Nevada-Las Vegas	1	2	0
Holbrook High	2	1	0	U. Nevada-Reno	2	2	1
Idaho State University	5	5	1	Univ. San Diego	2	0	0
Jerome High School	2	0	0	Univ. Texas-Arlington	0	2	0
LaVerne, Calif.	8	2	0	UTEP	0	5	0
Los Angeles Firemen	0	1	0	Weber State	2	8	0
Los Angeles-Loyola	1	2	1	West Texas State	1	9	0
Louisiana Tech	0	2	0	Western Illinois	1	0	0
Luke Air Force Base	0	1	0	Western New Mexico	14	5	1
McMurry, Texas	1	1	0	Westminster, Utah	1	0	0
Mesa High School	0	1	0	Whittier College	4	13	1
Montana	3	4	0	Whitworth, Wash.	1	0	0
Montana State	2	6	0	Wichita University	0	1	0
Montezuma Baptist	2	0	0	Willamette Univ.	1	0	0
Nationalist U, Mexico	1	0	0	Williams Air Base	1	0	0
Nebraska-Omaha	2	0	0	Williams High School	2	0	0
Needles High	1	0	0	Winslow Alumni	0	1	0
New Mexico	3	19	0	Winslow Athletic Club	1	0	0
New Mexico Highlands	13	4	2	Winslow High School	10	3	0
New Mexico Military	1	2	0	Yuma Air Base	1	0	0
New Mexico Mines	1	0	0				
				TOTALS	213	210	23

IN PHOENIX IT'S

NEWTON'S *Sands* HOTEL

- ... Banquet facilities seating up to 275 people with our own full Commercial Catering
- ... Eight spacious meeting rooms equipped with public address systems, special lighting and a full complement of instructional materials.
- ... Private, air conditioned 37-seat bus available to your group for tours and trips.

WELCOME TO THE SANDS...

OFFICIAL HOME OF THE



Fiesta Bowl

FROM A BANQUET TO A CONVENTION.

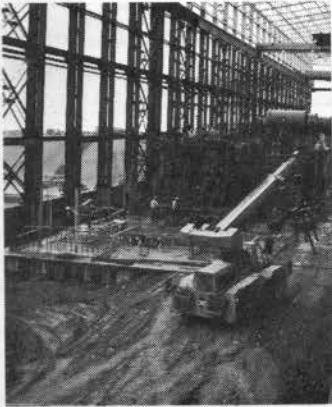
There's Something for Everyone at the Sands . . .

- ... Large, sparkling swimming pool.
- ... Shuffleboard and volleyboard courts.
- ... Complete athletic club — sauna bath, whirlpool and Universal Gym exerciser. Putting Green.
- ... Spacious coffee shop.
- ... Intimate dining room serving only the finest eastern corn-fed beef, homemade bread and the Sands specially prepared pastries.
- ... Party Lounge with top entertainment.
- ... And, of course —
— Luxurious, beautifully appointed rooms and suites with big-screen color TV.
- ... All new dining facilities featuring Bar-B-Cue ribs, duck and chicken — completely remodeled facilities.
- ... All new Newton's Bar-B-Cue dining room for 80.

Charcoal Broiled Prime Steaks
3320 East Van Buren
Telephone 275-7848

NAU'S GAME-BY-GAME FOOTBALL RESULTS FROM 1915 TO 1973

<p>1948 (Coach: Nick Ragus)</p> <p>0 West Texas State 29</p> <p>13 New Mexico State 7</p> <p>21 San Pedro Athletic Club 12</p> <p>0 Arizona State 40</p> <p>25 Redlands University 7</p> <p>6 Colorado Western 26</p> <p>47 LaVerne College 6</p> <p>20 Pepperdine 34</p> <p>12 Whittier College 27</p> <hr/> <p>144 4-5-0 188</p> <p>1949 (Coach: Emil Ladyko)</p> <p>0 Pepperdine 39</p> <p>43 California Tech 13</p> <p>13 Colorado Western 25</p> <p>6 Arizona State 62</p> <p>13 Whittier College 20</p> <p>20 Redlands University 20</p> <p>6 West Texas State 48</p> <p>0 New Mexico State 35</p> <hr/> <p>101 1-6-1 262</p> <p>1950 (Coach: Ben Reiges)</p> <p>12 West Texas State 52</p> <p>0 New Mexico 78</p> <p>37 LaVerne College 20</p> <p>0 Arizona State 63</p> <p>14 New Mexico State 20</p> <p>26 New Mexico Highlands 19</p> <p>7 Whittier College 28</p> <p>6 Western New Mexico 28</p> <hr/> <p>102 2-6-0 308</p> <p>1951 (Coach: John Pederson)</p> <p>6 New Mexico Highlands 13</p> <p>6 New Mexico 55</p> <p>14 California Tech 0</p> <p>6 Whittier College 0</p> <p>12 LaVerne College 13</p> <p>20 Idaho State 34</p> <p>12 New Mexico State 48</p> <p>0 Western New Mexico 20</p> <hr/> <p>86 1-7-0 211</p> <p>1952 (Coach: John Pederson)</p> <p>7 Eastern New Mexico 21</p> <p>36 LaVerne College 14</p> <p>20 California Tech 7</p> <p>13 New Mexico Highlands 7</p> <p>9 New Mexico State 33</p> <p>7 Western New Mexico 14</p> <p>0 Whittier College 25</p> <hr/> <p>92 3-4-0 121</p> <p>1953 (Coach: John Pederson)</p> <p>20 Adams State College 7</p> <p>0 Eastern New Mexico 20</p> <p>7 Whittier College 13</p> <p>7 Colorado Western 26</p> <p>18 LaVerne College 14</p> <p>12 New Mexico Highlands 8</p> <p>21 Panhandle, Okla., A&M 26</p> <p>20 Western New Mexico 7</p> <p>21 New Mexico Military 45</p> <hr/> <p>126 4-5-0 146</p> <p>1954 (Coach: Earl "Jiggs" Isely)</p> <p>14 Redlands University 0</p> <p>12 Adams State College 20</p> <p>16 Whittier College 20</p> <p>35 LaVerne College 19</p> <p>13 New Mexico Military 7</p> <p>13 New Mexico Highlands 27</p> <hr/> <p>202 6-4-0 159</p> <p>1955 (Coach: Earl "Jiggs" Isely)</p> <p>6 Adams State College 12</p> <p>0 Whittier College 26</p> <p>6 Redlands University 32</p> <p>0 LaVerne College 7</p> <p>20 New Mexico Highlands 41</p> <p>7 Panhandle, Okla. A&M 28</p> <p>12 Western New Mexico 14</p> <p>14 Pepperdine 34</p> <p>7 New Mexico Military 33</p> <hr/> <p>72 0-9-0 227</p> <p>1956 (Coach: Max Spilsbury)</p> <p>28 Fort Huachuca Army 6</p> <p>12 Pepperdine 14</p> <p>60 Univ. Cal-Riverside 0</p> <p>29 Westminster, Utah 0</p> <p>27 LaVerne College 6</p> <p>28 New Mexico Highlands 13</p> <p>47 Panhandle, Okla. A&M 0</p> <p>54 Western New Mexico 40</p> <p>6 Cal State-Long Beach 7</p> <p>20 University of San Diego 7</p> <hr/> <p>311 8-2-0 93</p> <p>1957 (Coach: Max Spilsbury)</p> <p>46 Fort Huachuca Army 0</p> <p>40 University of San Diego 6</p> <p>18 Redlands University 6</p> <p>34 Cal Poly-Pomona 7</p> <p>6 Cal State-Long Beach 7</p> <p>13 New Mexico Highlands 7</p> <p>42 Panhandle, Okla. A&M 0</p> <p>44 Western New Mexico 12</p> <p>26 Nevada-Reno 20</p> <hr/> <p>269 8-1-0 65</p> <p>1958 (Coach: Max Spilsbury)</p> <p>25 San Diego Marines 19</p> <p>16 Cal Poly-Pomona 8</p> <p>13 McMurry, Texas 6</p> <p>28 Redlands University 14</p> <p>37 LaVerne College 0</p> <p>20 New Mexico Highlands 0</p> <p>41 Panhandle, Okla., A&M 7</p> <p>30 Western New Mexico 7</p> <p>7 Willamette University 0</p> <p>40 Chico State 6</p> <p>41 Gustavus-Adolphus 12</p> <p>13 Northeastern Oklahoma 19</p> <hr/> <p>311 11-1-0 98</p> <p>†NAIA Playoff game at Tucson ‡Holiday Bowl, St Petersburg, Fla.</p> <p>1959 (Coach: Max Spilsbury)</p> <p>0 New Mexico State 35</p> <p>16 Idaho State 7</p> <p>7 McMurry, Texas 55</p> <p>6 Redlands University 0</p> <p>26 Chico State 12</p> <p>13 New Mexico Highlands 7</p> <p>27 Panhandle, Okla., A&M 13</p> <p>33 Western New Mexico 6</p> <p>7 Cal Poly-Pomona 7</p> <hr/> <p>135 6-2-1 142</p> <p>1960 (Coach: Max Spilsbury)</p> <p>61 China Lake Naval Base 2</p> <hr/> <p>229 6-4-0 156</p> <p>1961 (Coach: Max Spilsbury)</p> <p>6 New Mexico State 56</p> <p>6 Adams State College 14</p> <p>13 Redlands University 10</p> <p>0 Idaho State 27</p> <p>21 New Mexico Highlands 21</p> <p>10 University of Santa Clara 20</p> <p>35 Western New Mexico 20</p> <p>12 Cal Poly-Pomona 55</p> <p>33 Eastern New Mexico 14</p> <hr/> <p>136 3-5-1 230</p> <p>1962 (Coach: Max Spilsbury)</p> <p>6 Montana State 27</p> <p>16 Adams State College 0</p> <p>20 Colorado Western 7</p> <p>35 Idaho State 26</p> <p>17 New Mexico Highlands 0</p> <p>21 Cal Poly-SLO 20</p> <p>34 Western New Mexico 7</p> <p>0 Cal Poly-Pomona 38</p> <p>20 Whittier College 29</p> <p>0 Eastern New Mexico 19</p> <hr/> <p>169 6-4-0 173</p> <p>1963 (Coach: Max Spilsbury)</p> <p>6 Whittier College 6</p> <p>7 San Diego Marines 40</p> <p>2 Idaho State 13</p> <p>49 New Mexico Highlands 0</p> <p>7 Montana State 28</p> <p>52 Western New Mexico 14</p> <p>41 Cal Poly-Pomona 14</p> <p>14 Colorado Western 7</p> <p>15 Eastern New Mexico 6</p> <hr/> <p>195 5-3-1 118</p> <p>1964 (Coach: Max Spilsbury)</p> <p>41 Weber State College 6</p> <p>9 Univ. Texas-Arlington 10</p> <p>28 Idaho State 21</p> <p>45 Northern Colorado 7</p> <p>28 Cal Poly-Pomona 6</p> <p>56 Western New Mexico 0</p> <p>33 Adams State College 39</p> <p>17 Eastern New Mexico 28</p> <p>18 Santa Clara Univ. 28</p> <hr/> <p>275 6-3-0 123</p> <p>1965 (Coach: Andy McDonald)</p> <p>14 Weber State College 21</p> <p>2 Whittier College 3</p> <p>56 Adams State College 0</p> <p>0 Idaho State 0</p> <p>13 Cal Poly-Pomona 7</p> <p>23 Northern Colorado 0</p> <p>6 Univ. Texas-Arlington 27</p> <p>41 Ft. Lewis College 14</p> <p>41 Eastern New Mexico 14</p> <p>0 San Diego State 20</p> <hr/> <p>196 5-4-1 106</p> <p>1966 (Coach: Andy McDonald)</p> <p>14 Weber State College 32</p> <p>12 Fresno State 14</p> <p>14 Idaho State 13</p> <p>34 Central Missouri 16</p> <p>26 Cal Poly-Pomona 0</p> <p>32 Cal State-Long Beach 12</p> <p>34 Montana 8</p> <p>7 West Texas State 34</p> <p>21 Eastern New Mexico 14</p> <p>8 San Diego State 16</p> <hr/> <p>202 6-4-0 159</p> <p>1967 (Coach: Andy McDonald)</p> <p>39 North Dakota Univ. 10</p> <p>28 Weber State College 29</p> <p>0 Eastern New Mexico 7</p> <p>46 Whittier College 29</p> <p>41 Nebraska-Omaha 13</p> <p>34 Western Illinois 0</p> <p>26 Cal State-Long Beach 21</p> <p>7 Montana 10</p> <p>7 East Central Oklahoma 13</p> <p>0 New Mexico State 90</p> <hr/> <p>228 5-5-0 222</p> <p>1968 (Coach: Andy McDonald)</p> <p>14 Drake University 30</p> <p>26 Cal State-Long Beach 20</p> <p>14 Weber State College 21</p> <p>7 Nebraska-Omaha 6</p> <p>43 Northern Illinois 14</p> <p>20 Cal State-Northridge 21</p> <p>15 Montana State 20</p> <hr/> <p>123 2-8-0 287</p> <p>1969 (Coach: John Symank)</p> <p>38 Cal Poly-Pomona 7</p> <p>21 West Texas State 20</p> <p>7 Montana 52</p> <p>35 Montana State 0</p> <p>20 Cal State-Los Angeles 14</p> <p>15 Cal State-Long Beach 23</p> <p>61 Whitworth College 0</p> <p>21 Weber State College 19</p> <p>48 Eastern New Mexico 20</p> <p>18 Fresno State 27</p> <hr/> <p>284 7-3-0 182</p> <p>1970 (Coach: John Symank)</p> <p>25 Quantico Marines 3</p> <p>33 Cal State-Los Angeles 0</p> <p>0 Montana 20</p> <p>7 New Mexico Highlands 47</p> <p>13 New Mexico State 57</p> <p>17 Drake University 31</p> <p>8 Montana State 28</p> <p>6 Weber State College 38</p> <p>7 Eastern New Mexico 21</p> <p>7 Fresno State 42</p> <hr/> <p>123 2-8-0 287</p> <p>1971 (Coach: Ed Peasley)</p> <p>9 North Dakota State 42</p> <p>27 New Mexico Highlands 34</p> <p>7 Weber State College 23</p> <hr/> <p>10 Idaho State 30</p> <p>38 Colorado Western 0</p> <p>20 Redlands University 7</p> <p>7 New Mexico Highlands 7</p> <p>14 Panhandle, Okla., A&M 13</p> <p>34 Western New Mexico 26</p> <p>14 Cal Poly-Pomona 18</p> <p>31 National Univ., Mexico 0</p> <p>14 Eastern New Mexico 34</p> <p>14 University San Diego 14</p> <hr/> <p>257 6-3-2 151</p> <p>1961 (Coach: Max Spilsbury)</p> <p>6 New Mexico State 56</p> <p>6 Adams State College 14</p> <p>13 Redlands University 10</p> <p>0 Idaho State 27</p> <p>21 New Mexico Highlands 21</p> <p>10 University of Santa Clara 20</p> <p>35 Western New Mexico 20</p> <p>12 Cal Poly-Pomona 55</p> <p>33 Eastern New Mexico 14</p> <hr/> <p>136 3-5-1 230</p> <p>1962 (Coach: Max Spilsbury)</p> <p>6 Montana State 27</p> <p>16 Adams State College 0</p> <p>20 Colorado Western 7</p> <p>35 Idaho State 26</p> <p>17 New Mexico Highlands 0</p> <p>21 Cal Poly-SLO 20</p> <p>34 Western New Mexico 7</p> <p>0 Cal Poly-Pomona 38</p> <p>20 Whittier College 29</p> <p>0 Eastern New Mexico 19</p> <hr/> <p>169 6-4-0 173</p> <p>1963 (Coach: Max Spilsbury)</p> <p>6 Whittier College 6</p> <p>7 San Diego Marines 40</p> <p>2 Idaho State 13</p> <p>49 New Mexico Highlands 0</p> <p>7 Montana State 28</p> <p>52 Western New Mexico 14</p> <p>41 Cal Poly-Pomona 14</p> <p>14 Colorado Western 7</p> <p>15 Eastern New Mexico 6</p> <hr/> <p>195 5-3-1 118</p> <p>1964 (Coach: Max Spilsbury)</p> <p>41 Weber State College 6</p> <p>9 Univ. Texas-Arlington 10</p> <p>28 Idaho State 21</p> <p>45 Northern Colorado 7</p> <p>28 Cal Poly-Pomona 6</p> <p>56 Western New Mexico 0</p> <p>33 Adams State College 39</p> <p>17 Eastern New Mexico 28</p> <p>18 Santa Clara Univ. 28</p> <hr/> <p>275 6-3-0 123</p> <p>1965 (Coach: Andy McDonald)</p> <p>14 Weber State College 21</p> <p>2 Whittier College 3</p> <p>56 Adams State College 0</p> <p>0 Idaho State 0</p> <p>13 Cal Poly-Pomona 7</p> <p>23 Northern Colorado 0</p> <p>6 Univ. Texas-Arlington 27</p> <p>41 Ft. Lewis College 14</p> <p>41 Eastern New Mexico 14</p> <p>0 San Diego State 20</p> <hr/> <p>196 5-4-1 106</p> <p>1966 (Coach: Andy McDonald)</p> <p>13 Drake University 38</p> <p>25 Montana State 16</p> <p>20 Nevada-Las Vegas 7</p> <p>21 Trinity, Texas 42</p> <p>48 Cal State-Northridge 0</p> <p>17 Boise State University 22</p> <p>21 Southern Oregon 0</p> <hr/> <p>188 5-5-0 224</p> <p>1972 (Coach: Ed Peasley)</p> <p>7 North Dakota State 14</p> <p>31 Cal State-San Francisco 10</p> <p>17 Montana 40</p> <p>35 New Mexico Highlands 26</p> <p>9 Montana State 23</p> <p>22 Trinity, Texas 37</p> <p>7 Weber State College 28</p> <p>15 Cal State-Northridge 14</p> <p>21 Louisiana Tech 41</p> <p>13 Hawaii 20</p> <p>12 Boise State 39</p> <hr/> <p>189 3-8-0 292</p> <p>1973 (Coach: Ed Peasley)</p> <p>7 North Dakota State 36</p> <p>13 Weber State College 25</p> <p>14 Montana 10</p> <p>7 Louisiana Tech 37</p> <p>28 Texas Lutheran 14</p> <p>6 Boise State 21</p> <p>77 Cal State-Northridge 17</p> <p>0 Montana State 45</p> <p>14 Nevada-Las Vegas 42</p> <p>36 Idaho State 7</p> <hr/> <p>202 4-6-0 254</p>



Providing construction jobs.



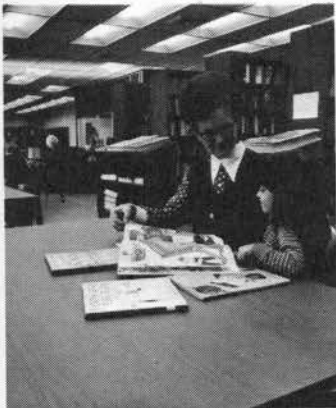
Creating recreational lakes.



Supplying college scholarships.



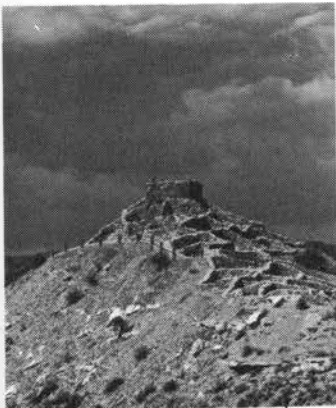
Providing medical care.



Starting a new library.

**More than
just copper.**

*phelps
dodge*
Corporation



Protecting an ancient city.



Building public swimming pools.

NAU FOOTBALL COACHES RECORDS

COACH	YEARS	RANGE	W	L	T
Ed Peasley	3	1970-73	12	19	0
John Symank	2	1969-70	9	11	0
Andy MacDonald	4	1965-68	22	17	1
Max Spilsbury	9	1956-64	59	24	5
Earl "Jiggs" Insley	2	1954-55	3	15	0
John Pederson	3	1951-53	8	16	0
Ben Reiges	1	1950	2	6	0
Emil Ladyko	1	1949	1	6	1
Nick Ragus	2	1947-48	5	12	0
Frank Brickey	4	1943-46	10	8	2
Maurice Moulder	3	1940-42	6	16	0
Garrett Arbelbide	4	1936-39	11	21	3
Mark McIntosh	3	1933-35	9	9	4
Rudy Lavik	5	1928-32	22	9	3
E. H. "Swede" Lynch	2	1926-27	11	3	2
T. D. Jessuppe	1	1925	1	3	1
W. E. Rogers	1	1924	4	4	0
R. G. Stevenson	1	1923	6	1	0
R. H. Drake	2	1921-22	4	8	0
Payne	1	1920	3	2	0
Lawyer	1	1919	1	1	0
R. A. Fuller	1	1918	1	0	0
Clarence D. Thorpe	3	1915-17	9	5	0

CONFERENCE	YEARS
Big Sky	1970 - Present
Frontier	1955 - 1961
New Mexico	1953 - 1955
Border	1931 - 1952



NCAA Member

BIG SKY CONFERENCE

NAU TEAM RECORDS

Most Points Sored
 Game: 77 vs Cal-Northridge 1973
 Season: 284 in 1969 (10 games)

Most Points Scored by Opponents
 Game: 103 Univ. of New Mexico 1916
 Season: 292 in 1972

Most Points Scored by Both Teams
 Game: 94—NAU (77) vs Cal Northridge (17) 1973
 Season: 481 in 1972 (NAU 189) (opponents 292)

Most Rushing Plays
 Game: 70 vs Western New Mexico 1963
 Season: 507 in 1973

Most Yardage Rushing
 Game: 560 vs Western New Mexico 1964
 Season: 2783 in 1964

Most Passes Attempted
 Game: 48 vs Fresno State in 1969
 Season: 344 in 1969

Most Passes Completed
 Game: 23 vs Eastern New Mexico and Whitworth
 in 1969
 Season: 172 in 1969

Most Touchdown Passes
 Game: 4 vs Long Beach in 1968
 4 vs Northern Illinois in 1968
 4 vs Eastern New Mexico in 1969
 Season: 26 in 1969

Most Passes Had Intercepted
 Game: 4 vs Montana State in 1962
 4 vs Texas-Arlington in 1965
 4 vs East Central Oklahoma in 1967
 Season: 24 in 1958

Most Passing Yards
 Game: 412 vs Whitworth in 1969
 Season: 2627 in 1969

Most Yards Total Offense
 Game: 615 vs Cal-Northridge in 1973
 Season: 3669 in 1969

Most Plays From Scrimmage
 Game: 90 vs Boise State 1971
 Season: 707 in 1973

Most Interception Returns
 Game: 4 vs Long Beach 1966
 Season: 24 in 1958 and 1968

Most First Downs
 Game: 29 vs Whitworth 1969
 Season: 190 in 1969

Most Rushing First Downs
 Game: 25 vs Western New Mexico 1963
 Season: 110 in 1963

Most Passing First Downs
 Game: 17 vs Whitworth in 1969
 Season: 112 in 1969

Most First Downs Penalty
 Game: 3 vs Montana State 1962
 3 vs Weber State 1966
 3 vs Hiram Scott 1968
 Season: 21 in 1968

Most Field Goals
 Game: 2 on 6 occasions
 Season: 6 in 1971

Most NAU Conversions
 Game: 9 vs Cal. Northridge 1973
 Season: 32 in 1960

Most Penalties Yards
 Game: 155 vs LaVerne 1958
 Season: 792 in 1967

Most Penalties by NAU
 Game: 18 vs Laverne 1958
 Season: 72 in 1968

Most Fumbles Recovered
 Game: 8 vs Long Beach 1966
 Season: 32 in 1966

Most Fumbles
 Game: 14 vs Hiram Scott 1968
 Season: 53 in 1968

Most Fumbles Lost
 Game: 7 vs Hiram Scott in 1968
 Season: 29 in 1967

Most Touchdowns Scored
 Game: 11 vs Cal- Northridge 1973
 Season: 43 in 1956

Most Rushing Touchdowns
 Game: 9 vs Cal-Northridge 1973
 Season: 39 in 1956

Most Passing Touchdowns
 Game: 4 on four occasions
 Season: 26 in 1969

Highest Punting Average
 Game: 54.8 vs Hiram Scott 1968
 Season: 42.1 in 1965

Most Punts
 Game: 11 vs New Mexico State 1967
 Season: 66 in 1969

Most Punts Had Blocked
 Game: 2 by several teams
 Season: 3 in 1973

Most Puts Blocked by NAU
 Game: 2 by several teams
 Season: 3 in 1964

Most Punting Yards by NAU
 Game: 383 vs Montana 1968
 Season: 2445 in 1968

Most First Downs Allowed
 Game: 26 by New Mexico State 1967
 Season: 180 in 1967

Fewest NAU Points Scored
 Game: 0 on 69 occasions
 Season: 20 in 1942

Most NAU Shutouts
 Game: 0 on 89 occasions
 Season: 8 in 1928
 Last: NAU 48 Cal-Northridge 0 in 1971

Most Times NAU Shutout
 Game: 0 on 69 occasions
 Season: 6 in 1935
 Last: Montana State 45-0 in 1973

Most NAU Wins
 Season: 10 in 1958
 Career: 213 (1915 to 1973)

Most NAU Defeats
 Season: 9 in 1957
 Career: 210 (1915 to 1973)

Most Tie Games
 Season: 3 in 1935
 Career: 23 (1915 to 1973)
 Last: 0-0 with Idaho State 1965

Least Points Allowed
 Game: 0 on 89 occasions
 Season: 13 in 1929

Least Yards Rushing
 Game: Minus 40 vs Cal State La 1970
 Season: 706 in 1957

Least Passing Yards
 Game: Zero vs Idaho State 1961
 Season: 477 in 1956

Least Total Offense
 Game: 24 vs Univ. San Diego 1956
 Season: 1423 in 1956

Least First Downs
 Game: 5 by LaVerne 1958
 5 by Colorado Western 1960
 5 by Western New Mexico 1963
 Season: 93 in 1957

Least First Downs Rushing
 Game: Zero by Univ. of San Diego 1956
 Season: 44 in 1957

Least First Downs Passing
 Game: Zero by Idaho State 1961
 Season: 15 in 1927

NORTHERN ARIZONA UNIVERSITY RECORDS

INDIVIDUAL

Most Points

Game: 24 Jimmy Smith vs Texas Lutheran 1973
 24 Jimmy Smith vs Cal-Northridge 1973
 Season: 70 Cruz Salas 1956
 Career: 128 Non Cote 1956-59

Most Touchdowns

Game: 4 Jimmy Smith vs Texas Lutheran 1973
 4 Jimmy Smith vs Cal-Northridge 1973
 Season: 11 Charlie Brown 1969
 11 Jimmy Smith 1973
 Career: 20 Ron Cote 1956-59

Most Net Yards Rushing

Game: 322 Jimmy Smith vs Cal-Northridge 1973
 Season: 1252 Jimmy Smith 1973
 Career: 2233 David Estrada 1961-64

Most Rushing Attempts

Game: 32 Jimmy Smith vs Texas Lutheran 1973
 Season: 243 Jimmy Smith 1973
 Career: 348 Dave Estrada 1961-64

Best Rushing Average

Game: 11.9 Jimmy Smith vs Cal-Northridge
 1973 (322 in 27 attempts)
 Season: 9.8 Jim Sims 1964 (885 in 91 attempts)
 Career: 8.2 Jim Sims 1961-64

Most Touchdowns Rushing

Game: 4 Jimmy Smith vs Texas Lutheran 1973
 4 Jimmy Smith vs Cal-Northridge 1973
 Season: 11 Jimmy Smith 1973
 Career: 20 Ron Cote 1956-59

Most Passing Attempts

Game: 45 Mike Olson vs Montana State 1968
 Season: 322 Mike Olson 1968
 Career: 322 Mike Olson 1968

Most Passes Completed

Game: 23 Bob Stewart vs Eastern New Mex. 1969
 Season: 139 Mike Olson 1968
 139 Bob Stewart 1969
 Career: 139 Mike Olson 1968
 139 Bob Stewart 1969
 Game: 368 Bob Stewart vs Weber State 1969
 Season: 2123 Bob Stewart 1969
 Career: 2123 Bob Stewart 1969

Most Total Offense

Game: 346 Bob Stewart vs Weber State 1969
 Season: 1957 Bob Stewart 1969
 Career: 2233 Dave Eserada 1961-64

Most Touchdown Passes Thrown

Game: 4 Ted James vs Central Missouri 1966
 4 Mike Olson vs Long Beach State 1968
 4 Bob Stewart vs Eastern New Mexico 1969
 Season: 19 Mike Olson 1968
 Career: 19 Mike Olson 1968

Most Touchdown Passes Caught

Game: 3 Don Brackin vs Westminster 1956
 3 Bob Grey vs Long Beach State 1968
 3 Charlie Brown vs Whitworth 1969
 3 Dick Baserman vs Cal-Northridge 1971
 Season: 11 Charlie Brown 1969
 Career: 13 Al Rex 1956-69



JIMMY SMITH



AL CIRCOSTA



CHARLIE BROWN



BOB STEWART



JIMMY FULLER



MIKE OLSON



BOB GREY

Most Passes Caught

Game: 12 Charlie Brown vs Eastern New Mexico
 1969
 Season: 63 Charlie Brown 1969
 Career: 98 Vince Cisterna 1947-49

Most Yardage on Receptions

Game: 245 Charlie Brown vs Whitworth 1969
 Season: 1134 Charlie Brown 1969
 Career: 1667 Vince Cisterna 1947-49

Most Passes Intercepted

Game: 3 Fritz Kruezer vs Adams State 1965
 3 Albert Circosta vs Long Beach 1966
 Season: 12 Al Alvarea 1958
 Career: 12 Al Alvarea 1958

Most Punts

Game: 11 Jim Youngs vs New Mexico State 1967
 Season: 61 Bob Grey 1969
 Career: 109 Bob Grey 1968-69

Most Punt Yardage

Game: 385 Jim Youngs vs New Mexico State 1967
 Season: 2288 Bob Grey 1969
 Career: 4151 Bob Grey 1968-69

Best Punt Average

Game: 54.8 Rusty Tillman vs Hiram Scott 1968
 Season: 41.9 Tom Foster 1965
 Career: 38.7 Jim Youngs 1966-67

Most Field Goals

Game: 2 Sonny Campbell vs Fresno State 1969
 2 Gary Galati vs Cal State-LA 1970
 2 Gary Galati vs Drake 1971
 2 Gary Galati vs Montana State 1971
 2 Gary Galati vs Weber State 1973
 2 Gary Galati vs Idaho State 1973
 Season: 6 Gary Galati 1971
 Career: 16 Gary Galati 1970-73

Longest Returns

Interceptions: 95 Ron Cote vs Long Beach 1956
 Punt: 90 Jim Fuller vs West Texas State 1966
 Kickoff: 98 Angel Salas vs LaVerne 1956
 Blocked Field Goal: 70 Rudy Cabrera vs Western
 New Mexico 1958
 Fumble Recovery: 88 Jim Oman vs New Mexico
 Highlands 1963
 Intercepted Pichout: 85 Louis Reyna vs Cal Poly-
 Pomona 1957

Longest Offensive Plays

Run from Scrimmage: 86 Jim Sims vs Western New
 Mexico 1964
 86 Jimmy Smith vs Cal-Northridge 1973
 Pass-Run: 86 Bob Brown pass from Jim Becken-
 hauer vs Montana 1969

Longest Kicks

Punt: 79 Rusty Tillman vs Weber State 1968
 Field Goal: 55 Gary Galati vs Weber State 1973

LUMBERJACKS IN PRO RANKS

PLAYERS

Sonny Campbell, running back, Vancouver
Al Clark, defensive back, Los Angeles Rams
Gary Galati, placekicker, San Diego Chargers
Mark Lomas, defensive end, New York Jets
Steve Maier, wide receiver, New York Giants
Tom Ramsey, defensive end, Detroit Wheel
Bob Stewart, quarterback, New York Giants
Rusty Tillman, linebacker, Washington Redskins
Rosie Van, kick return, Green Bay Packers

COACHES

C. O. Brocato, linebackers, Houston Oilers
Owen Dejanovich, offensive line, Detroit Wheel
Chick Harris, defensive backs, Chicago Fire
Lamar McHan, quarterbacks, New Orleans Saints
John Symank, defensive backs, New York Giants

PLAYERS NO LONGER ACTIVE

Frank Armstrong, quarterback, Chicago Bears
Doug Baar, offensive tackle, Atlanta Falcons
Bob Brown, flanker, San Diego Chargers
Charlie Brown, flanker, Washington Redskins
Dave Cahill, defensive tackle, Washington Redskins
Florence Chandler, fullback, Phoenix Blazers
Lacy Coulter, fullback, St. Louis Cardinals
Owen Dejanovich, defensive tackle, Washington Redskins
Ed Duley, defensive tackle, Houston Oilers
Mike Hannigan, offensive guard, Chicago Bears
Ernie Hansen, center, San Francisco 49ers
George Herman, fullback, Philadelphia Eagles
Steve Holmes, defensive tackle, Houston Oilers
Joe Jackson, running back, Phoenix Blazers
Ed Kelly, defensive tackle, Jersey City Reds
Dalton Kimble, flanker, Edmonton Eskimos
Hosie Maddox, offensive tackle, LA Dons
Mike Mercer, placekicker, San Diego Chargers
Rex Mirich, defensive tackle, New England Pats
Ken Moulton, split end, Phoenix Blazers
Ron Moyer, offensive guard, Phoenix Blazers
Cecil "Brute" Mulleneaux, blocking back, New York Giants
Rich O'Hara, flanker, Baltimore Colts
Tom Rogers, running back, Kansas City Chiefs
Rick Saathoff, defensive end, Philadelphia Eagles
Bill Shorty, linebacker, Houston Oilers
Jimmy Smith, halfback, Southern California Sun
Sim Stokes, flanker, Dallas Cowboys
Bud Wiedoff, defensive end, Jersey City Reds
Calvin Wood, guard, Phoenix Blazers

NAU ALL-AMERICAS

(Since 1966)

FOOTBALL

- 1973: Jimmy Smith (halfback) second team (AP).
1972: Tom Ramsey (defensive end), third team (AP); Rufus Mullen (cornerback) and Kelly Scultz (tight end), both honorable mention (AP).
1971: John Nuttal (offensive guard), second team (AP); Mike "Bo" Boettcher (linebacker) and Rufus Mullen (cornerback) both honorable mention (AP).
1970: Steve Maier (wide receiver) honorable mention (AP).
1969: Charles Brown (flanker) and Tom Anderson (defensive end) both third team (AP); Bob Stewart (quarterback) and Mark Lomas (defensive end) both honorable mention (AP).
1968: Larry Small (offensive guard), first team (AP); Bud Wiedoff (defensive end), second team (AP); Ed Dudley (defensive tackle), honorable mention (AP).
1967: Bill Hanna (defensive end) and Rich O'Hara (wide receiver) both honorable mention (AP).
1966: Dick Ries (linebacker), first team (AP); and Sim Stokes (wide receiver), honorable mention (AP).

BASKETBALL

- 1971: Walt Mannon (guard) third team (AP), 2nd team All Big Sky.
1970: Don Rather (guard), honorable mention (NAIA); Mike Williams, (forward) honorable mention (AP).
1969: George Winters (forward), and Jim Plump (forward) both honorable mention (AP).
1968: Jim Plump (forward), honorable mention (AP).
1967: Jim Plump (forward), honorable mention (AP).

BASEBALL

- 1971: Tim Rajsich (shortstop) honorable mention Academic All-American, first team Big Sky. Bob Huddleston (centerfield) 2nd team District 7 NCAA.
1970: Vic Acuna (outfielder) and Tim Rajsich (shortstop) both honorable mention (NAIA). Acuna and Lonny Miller (pitcher) first team NCAA District 7 college division.
1969: Mark Brewster (outfielder) second team (NAIA) and Dan Roberson (first base) honorable mention (NAIA).
1968: Mark Brewster (outfielder) honorable mention (NAIA).

WRESTLING

- 1970: Mickey Carroll, (167-pound) first team (NAIA). Carroll Gary Bennett (126-pound) first team All District 7 NAIA.
1969: Mickey Carroll, (167-pound) first team (NAIA) national champ.

OUT DOOR RACK

- 1970: Richard Sliney (6-mile) second team (NAIA) and Richard Selby (mile run) second team (NAIA).
1968: Nick Martinez (high jump) first team (NAIA) national high jump champion (6-10).

CROSS COUNTRY

- 1972: Dave Tocheri, first team NCAA University, placed 10th; Sliney, first team, placed 21st in the same meet.
1971: Richard Sliney, first team NCAA, placed 6th in University Division.
1970: Richard Sliney, first team, NCAA university division. Placed 12th.
1969: Richard Sliney, first team, NAIA. Dave Tocheri, first team (NAIA).

INDOOR TRACK

- 1971: Richard Sliney, first team NCAA, placed 3rd in University Division two-mile run.
1970: Paul Wagner (800-run) second team (NAIA).

SKIING

- 1970: Dag Ostvold (All-Round) second team (NCAA) second in ski meister competition at national meet.



1974 NAU CHEERLEADERS — Back row, left to right, Becky Reynolds, Valparaiso, Ind.; Wilma Hartwick and Pat Rohrback, both from Buckeye; front row, Debbie Bloxom, Rankin, Texas; Karen Abbott, Las Vegas, Nevada (Rancho); and Nancy Gilispie, Phoenix, (Alhambra).

BRIDAL * FORMAL * LINGERIE

Y-Vette's

Y-VETTE THACKER
9 EAST ASPEN
DOWNTOWN FLAGSTAFF

TELEPHONE 779-2562

Flagstaff Glass Company, Inc.

- SLIDING WINDOWS
- MEDICINE CABINETS
- SLIDING DOORS
- MIRRORS
- AUTO GLASS
- SHOWER DOORS
- REPLACEMENTS

The Kangaroo Pouch

Maternity Apparel

*"Everything for
the Mother-to-Be"*

Daily — Except Sun.

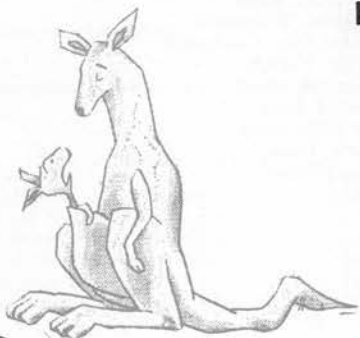
779-0077

Currently at

2917 N. WEST
FLAGSTAFF

774-6641

2921 NORTHWEST
STREET





1974 NAU POM PON LINE — Back row, left to right, Robin Rumble, Las Vegas, Nevada (Western); Sally Bazan, Phoenix (Cortez); Liz Kohl, Fountain Valley, Calif.; Chuckie Huebl, Tucson (Sunnyside); front row, Mary Koury, Holbrook; Kay Parker, Scottsdale (Coronado); Candi Jost, Tucson (Amphitheater); Cordi Clark, Phoenix (West); and Vicki Walker, Phoenix (West).

Jim Anderson
JEWELERS

FLAGSTAFF

2229 East 7th Avenue • Telephone 526-0074

Telephone 774-3121

PAGE

Telephone 645-2250

SPECIALISTS IN WIDE TIRES
MAGS — CHROMES



Alpine TIRE CO., INC.



Phone 445-0090
657 N. 6th Street
Prescott, Arizona (86301)

Phone 779-0246
302 West Santa Fe
Flagstaff, Arizona (86001)



Southwest Forest Industries
NORTHERN ARIZONA DIVISION