

NORTHERN ARIZONA UNIVERSITY
vs
TRINITY (TEXAS) UNIVERSITY

Saturday, Oct., 14, 1972
Lumberjack Stadium 3 p.m.

HOMECOMING
"TRY TO REMEMBER"



OFFICIAL PROGRAM
50 Cents



1972 FOOTBALL STAFF ---- Front, left, Rob Wables, student trainer, Don Anderson, offensive backs; Rick Gordon, graduate assistant; Al Worley, defensive backs; Don Jones, graduate assistant; Ken Sawin, line-backers; Don Heizer, student trainer. Back row, left Mike Nesbitt, head trainer, Rich Barnett, graduate assistant; John Nuttal, graduate assistant. Scott Schumann, offensive line; Terry Hudgens, graduate assistant; Ed Peasley, head coach; Mike "Bo" Boettcher, graduate assistant; and Jim Newberry, student trainer.

Flagstaff Health Spa

AND FIGURE SALON

"YOUR HEALTH
IS YOUR WEALTH
INVEST TODAY"

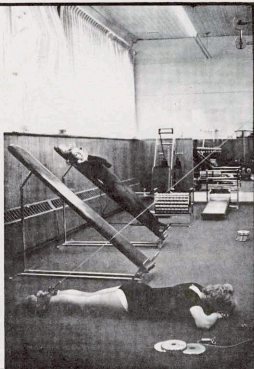


- STUDENT DISCOUNTS
- 4-WALL HANDBALL
- ULTRA VIOLET SUNROOM
- REDWOOD DRY SAUNA ROOM
- INDIVIDUAL DRESSING AND SHOWER STALLS
- INDIVIDUAL PROGRAMS, JUST FOR YOU
- OLYMPIAN WEIGHTS
- FIGURE CONTOURING
- JACUZZI WHIRLPOOL

774-6619

111 E. ASPEN

DOWNTOWN FLAGSTAFF

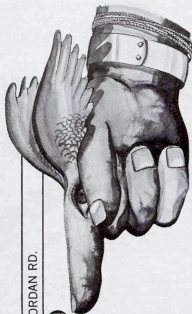


NORTHERN ARIZONA UNIVERSITY
LUMBERJACK GRID REVIEW

TABLE OF CONTENTS

NAU COACHING STAFF	2
GRAND CANYON	4
OAK CREEK CANYON	5
NAU BAND	6
POM PON GIRLS	7
CHEERLEADERS	8
TOWNJACKS	9
BLUECOATS	9
NCAA NATIONAL FEATURE	11
NAU OFFICIALS	12
TODAY'S GAME	13
MOMENT OF GLORY	14
CENTURY CLUB	15
1972 NAU ROSTER	16
STARTING LINEUPS	19
OPPONENT'S ROSTER	21
OPPONENT'S CAMPUS	22
OPPONENT'S PLAYERS	23
1972 NAU PLAYERS	24
MONTEZUMA'S CASTLE	25
TODAY'S EMPHASIS	26
NAU FROM THE AIR	27
1972 NAU PLAYERS	28
FLAGSTAFF'S POW WOW	29
INDIVIDUAL RECORDS	30
BIG SKY INDIVIDUAL RECORDS	31
LUMBERJACK HISTORY	32
NAU'S PRO PLAYERS	32
NAU'S ALL-AMERICA ATHLETES	33
MONUMENT VALLEY	34
METEOR CRATER	35

SPORTS INFORMATION DIRECTOR: Norm Borg
 EDITOR: Wylie Smith
 PHOTOGRAPHY: Norm Borg, Bill Hoyt, Doug Hutter, Wylie Smith
 LOCAL ADVERTISING: Wylie Smith
 NATIONAL ADVERTISING: Spencer Marketing Services
 370 Lexington Avenue
 New York, New York (10017)



RIORDAN RD.

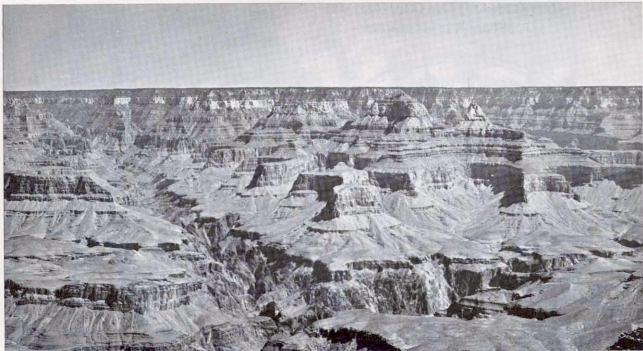
HIGHWAY 89 A

**This is
where
it's at.**

Hey University people. A new total service bank near your University. Want to open a checking account or a savings account? We can help you. Matter of fact, we offer about every banking service that could be of benefit to you. We even have an exclusive Newcomers Information Kit: helpful hints if you're new in town, a guide and maps to tell you what's going on and where. All kinds of facts to help you get settled. So if you want to know where it's at, come in and we'll show you.



FIRST NATIONAL BANK OF ARIZONA
MEMBER OF F.I.C. • FEDERAL RESERVE SYSTEM



THE GRANDEST CANYON --- Northern Arizona's Grand Canyon is truly one of the scenic wonders of the world and it lies just 75 miles north of the NAU campus.

NORTHERN ARIZONA TAXI
774-2102

DAILY
GRAND CANYON
TOURS

TOURS OF ALL NORTHERN ARIZONA



NAVA HOPI
TOURS
INC.

774-5003

NATION-WIDE CHARTER SERVICE



ARIZONA
SNOW BOWL
AND
SKY RIDE

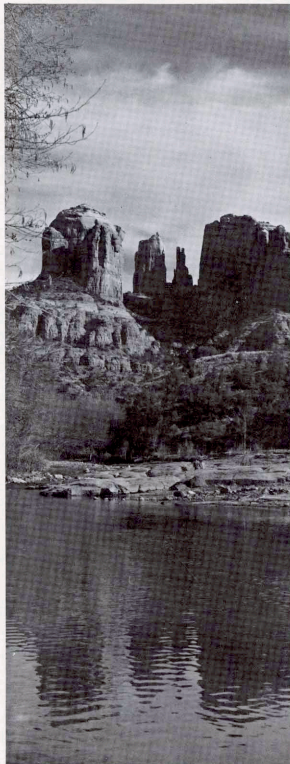
See Arizona From
It's Highest Viewpoint
Hours 9 a.m. to 5 p.m.
Take Highway 180 North
To Snow Bowl Turnoff

TRY OUR BEER-WINE BAR

HOWARD'S
LIQUOR
&
Sporting Goods

Next to the
Lumberjack

120 S. Sitgreaves



OAK CREEK CANYON --- Just 18 miles south of the NAU campus is picturesque Oak Creek Canyon. Sedona, some 27 miles south of NAU, offers an abundance of scenic spots.

FLAGSTAFF'S ONLY EXCLUSIVE SPORTING GOODS STORE

FLAGSTAFF SPORTSMAN



**"Where Sporting Goods Are a Specialty
Not a Sideline"**

BICYCLES
SERVICE
& SALES

TEAM
SPORTS
EQUIPMENT

BILL HIGLEY

774-1221

RUSS
PINKERMAN

322 WEST SANTA FE AVENUE
FLAGSTAFF

ROWAN'S

"YOUR NEIGHBORHOOD PHARMACY"

Greenlaw Village



2223 E. 7th Ave.
774-2767
FLAGSTAFF

NORMAN JUNG'S

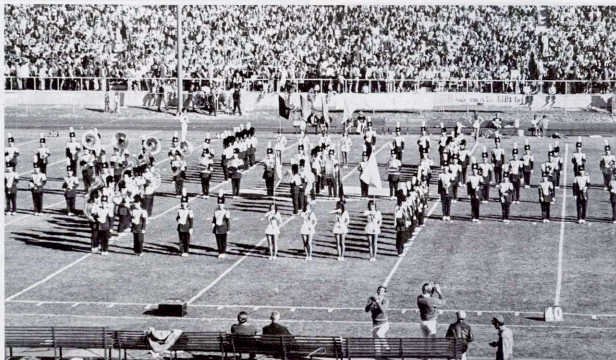
FORT VALLEY



OLD
FASHION
SERVICE

U-HAUL

1800 N. FT. VALLEY ROAD 774-2814



NAU'S MARCHING BAND --- Under the direction of Don Wolf, the 1972 NAU Marching Band, will provide color and eventful music at all home games.



SEE FORT McCLURG

WAZ
MUSEUM

IN FLAGSTAFF
NORTH ON US 89
Open Daily All Year
Large Gift Shop

RETURN THIS AD AND PLAY MINIATURE GOLF FOR 25 cents!

HARPERS  **MAYTAG**

HOME APPLIANCE CENTER

HAROLD E. HARPER

PAUL E. HARPER

PHONE (602) 774-2605

GREENLAW VILLAGE * FLAGSTAFF, ARIZONA 86001



NAU'S POM PONS --- Members of the 1972-73 NAU Pom Pon squad are, front, left, Sandy Dunlap, Phoenix (Central), co-captain; and Kim Layton, Phoenix (Sunnyslope), captain. Seated, left, Beverly Cambron, Buckeye; Jennifer Lewis, Tuba City; Pat Fauland, Bisbee; Marian Van Buskirk, Phoenix (Washington); Mary Martin, Buckeye; Tina Parker, Scottsdale (Coronado); Sandy Genung, Tucson (Amphitheatre); and Mary Koury, Holbrook.

We're close to you in Flagstaff.

With three convenient offices staffed by helpful
Valley Bankers... to serve your every banking need.



BILL BORCHERDING
VP Area Manager
**DOWNTOWN
OFFICE**



ELTON TURNER
Manager
**UNIVERSITY
OFFICE**



JACK RICHARDS
Manager
**EAST FLAGSTAFF
OFFICE**

Valley Bank.

Leading bank in the Rocky Mountain states



MEMBER F. D. I. C.



NAU CHEERLEADERS --- Front, left, Ellie Savage, Santa Monica, Calif.; Kathy Ponte, Phoenix (East); Sandy Kostroski, Tucson (Palo Verde); Betsy Giddings, Phoenix (Washington); Diane Young, Phoenix (West) and Brenda Johnson, Window Rock. Back row, left, Becky Reynolds, Valparaiso, Ind.; Denise Espil, Litchfield Park (Agua Fria High); Phyllis Watson, Lakeside (Blue Ridge High); Sue Richards, Tucson (Sahuaro); and Berni Tewksbury, Globe.

**Babbitt's
britches**

10% EAST ASPEN DOWNTOWN FLAGSTAFF

1972-73 NAU BLUECOATS

*Milt Schroeder Dean, Records and Admission President	Norman Johnson Director of Athletics
Richard Davies South Center Vice-President	*Moe Johnson Physical Education
*Joe Rolfe Dean, Student Services Secretary	Mel Kinney Music
Vafayi Abolghasem College of Engineering	George Kyte History
Bill Anderson Property Control	Arthur Lee Grants
Sam Bliss College of Education	*Art Mansure Humanities
R. B. Cavanaugh Personnel	*Lewis McDonald University Relations
*Clayton Chance College of Engineering	*Joseph Mehrhoff Dean, Engineering
Robert Cooley Public Information Director	Mike Miles College of Education
*Robert Crozier Alumni Secretary	Lyle Mullens College of Education
Bill Davis College of Engineering	*LaVerne Piche Director of Finance
*Bob Dickson Student Affairs	Clarence Shaw Music
*Jack Dixon College of Engineering	*Tony Shelton College of Engineering
Alan Flitcraft Physical Education	Ollie Shullenbarger Physical Plant
James Fredrick Counseling Center	Mike Sickinger Assistant, Finance
*Virgil Gillenwater Executive Vice President	*Wylie Smith Public Information Office
*Eugene Grape College of Business Administration	Hartart Staires Vice President
Herb Gregg Physical Education	Ralph Stout College of Education
*Leo Haberlack Physical Education	Howard Travis Business Office
Lola Hall College of Education	*Joseph Troxler College of Engineering
Kent Heworth College of Engineering	J. Lawrence Walkup President
Jack Hesketh Married Housing	Ken Westowski Business Office
Eugene Hughes Provost, Arts and Science	John Wettaw Chemistry
Max James English	Don Wolf Band Director
	* Charter Member

1972-73 FLAGSTAFF TOWNJACKS

Erin Boren	Dick Bagwell	Steve Marstein
James Shirley	David Smith, MD	Tuffy Rice
William Gaylord, DDS	William Gaylord, DDS	Nava-Hopi Tours Bill Davis
First National Bank	William Flick	Andrew Wolf
Robert Clark	Douglas Jackson	Eddie Garcia
Virgil Swanner	Modern Motors	Monte Vista Hotel Walter Johnson
Lowell Thurston	Ralph Platt	Rollin Gosney, DDS
Jerry Ormatak	Gilbert Sechrist, MD	Dennis Morefield Signs Dennis Morefield
Jake Williams	Howard Wren, DDS	Phoenix Investment Co. Lonnie Wilkerson
Herb Gregg	Arizona Public Service	Valley National Bank Bill Borcherding Jack Richards Clark Merritt Elton Turner Dwaine Thompson Joe Hazlett Ray Garcia
Dr. Milt Schroeder	Arizona Supply Company Jack Wiesel	Robert Blaser William Egan Harper Maytag Harold Harper Paul Harper
Pete Michael	David Kelly	Jerry Smith Elmer Dresler
Russ Pinkerman	Vernon Cave	Howard Yost
Ernie Burrus	Harold Larson	Roama's Pharmacy Joy Rowan
Babbitts	Elley Gibson	Laurance Wren
Fel Babbitt	Malcolm Heck	William Epperson
John Babbitt	Jess McMahan	Walter McDonald
Paul Babbitt	Kenneth Doughty	Martin Auza
Ralph Billy	Richard Deaver	Branch Gill
Bob Nimmons	Shelton Dowell	Robert Conley
Harvey Marchausser	H. Ray Stutler	Huffer Oil Company Jerry Gibson
Dick Baker	Jim Fox	David Oberhau Ken McElyea
Mike D'Mura	Joe Rolfe	Sam Pappas
Raymond Lopez	Dr. J. Lawrence Walkup	Jim Clements
George Leming	Bleesoe's Men's Store R. A. Bleesoe	David McKay
Jim Roubal	Dr. Lyle Mullens	Gerald McMahon, MD
Dick Pickett	Don Clark	Bob Knoles
Frank Dickinson	Merrill Young, Co. Merrill Young	Tom Knoles
Max Hamilton	Robert Blair	The Arizona Bank Jim Lee
Southern Union Gas	George Hershey, DO	Wendell DeCross
Francis Decker	Lee Sullivan	Michael Riordan
Jerry Andreatos	Robert Spackeen	Robert Mizer
JPA Floor Coverings	Bill Garbarino	Bob Cooley
Joe Arredondo	Dr. Richard Davies	Wylie Smith
William Gold	M. G. Fronske, MD	
Tom Tessaw	William Randall	
Foodtown Super Market	Arthur Dalpair, Jr., DDS	
W. L. Wood	Andy's Sporting Goods Andy Burtin	
Dr. Mike Miles	Jack Knowles	
Dr. Charles Fauset	Arizona Daily Sun	
J. W. Kearney	John Fuaght	
Tony Galabdon	Ken Brown	
Aspen Office Supply Don DeLap	Alan Kinwig	
Az. Title and Trust of Coconino	Hadley Hicks	
Ernie Phillips	Larry Lovan	
Melvin Hutchinson		
Flagstaff Mortuary Dick Bagwell		
Robert Gaylord		
Alan Flitcraft		
Kenneth M. Frost		

NAU'S BOOSTER CLUBS

NAU Booster clubs help support the Lumberjack athletic program many ways. The Townjacks, a local organization of athletic-minded sports fans, is open to membership by individual or business. Individual membership is \$10 yearly and Business Membership is \$25. The NAU Bluecoats are a group of on-campus booster who promote NAU events and award the scholar-athlete. Initial membership is \$30 which includes blazer and yearly dues are \$10 thereafter.

Buy your family a lot of recreation

Here is one of those rare opportunities for you to combine the right investment with the right recreational community.

And your timing is perfect!

Continental Country Club is a going community . . . a year round family recreational community. The 18 hole championship golf course is already in operation. The Clubhouse and Pro Shop are open. The tennis courts, riding stables, trails and restaurants are all waiting there for you and your family. Go fishing, backpacking, hiking — skiing, skating and snowmobiling in winter.

Spectacular Arizona Scenery

Where else can you combine breathtaking scenery, recreational diversity and investment opportunity and still be an easy two hour freeway drive from Phoenix?

Continental Country Club is located in Flagstaff, high in the mountains

where the summer temperature averages a comfortable 77 degrees. You live in the shadow of the majestic San Francisco Peaks, surrounded by over 2000 acres of rolling countryside studded with huge Ponderosa pines. Yet Flagstaff is only 5 minutes away with all its conveniences — shopping centers, schools, churches, and medical facilities.

You are close to such attractions as Oak Creek Canyon, Grand Canyon, Lake Powell, Monument Valley and the famed Snow Bowl.

Unique Financial Advantages

Since Continental Country Club is located within the city limits of Flagstaff, you are eligible for conventional home financing, truly an important consideration. Your house will be easier to finance, easier to resell.

Over \$6 million have already been spent on grounds and improvements. Sewers and paved streets are already

in. Numerous lakes are filling now. Teen recreational facilities are being completed. The golf course is being expanded. All of these developments will safeguard your investment and help increase its value in years to come.

Extensive capital is required to sustain this type of expansion. And Continental Country Club is backed by a \$1 billion corporation. As a wholly-owned subsidiary of Continental Homes, Inc., it is part of the huge American Financial Corporation with assets of over a billion dollars.

Various other subsidiaries are nation wide and include The Provident Bank, American Financial Leasing and Services Company, Hunter Savings Association, United Liberty Life Insurance Company and the Cincinnati Enquirer Newspaper.

For more information about Continental Country Club, why not call 258-6896 in Phoenix.



Continental Country Club

6 miles east of Flagstaff
on Interstate 40

Continental Country Club & Estates P.O. Box 16166 Phoenix, Arizona 85011

Gentlemen: I would like to take advantage of this unique investment opportunity. Please send complete information.

name _____

address _____

city _____ state _____ zip _____

my telephone is _____

A Long and Meaningful Experience in Football

by BILL JAUSS, Chicago Today

Early in the 1970 season, a Northwestern middle linebacker named John Voorhees was enjoying a hellishly successful night against UCLA in Los Angeles.

Voorhees's ability to diagnose plays was unreal! It was as though he was receiving help from upstairs. In fact, when members of the UCLA staff noted an uncommon bulge in the rear of his helmet, they lodged a heated protest:

"Make him change that helmet," they demanded at halftime. "He must be receiving radio signals from a coach in the press box. He knows every play we're calling."

Well, over Northwestern protests, officials made Voorhees change into a standard-looking headgear. Then, after UCLA's 12-7 last minute victory, Bruin coaches and game officials suffered an embarrassing putdown.

Messages Sent to Medical Observers

Voorhees had carried a radio in his helmet all right. Only it didn't receive any messages. It sent them to medical observers in the press box.

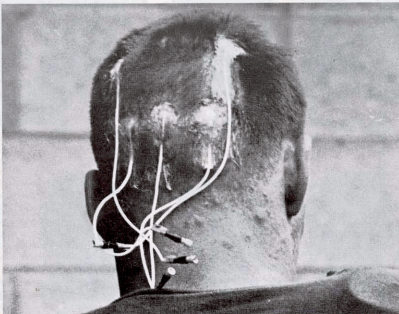
Northwestern had written UCLA months before and received written permission for its middle linebacker to wear electronic equipment in his helmet and shoulder pads. This was part of an 11-year study conducted on helmet safety and brain damage by Northwestern team physician Dr. Stephen E. Reid.

Since 1961, Reid has "wired" one Wildcat player in every game. Electrodes attached to his scalp lead into a transmitter built into the rear of the helmet. This plus additional equipment in the shoulder pad transmit six channels of data of every "hit" to telemetry systems in the press box.

Reid is a scholarly, pipe-smoking, average-sized member of the medical school faculty at Northwestern. He also has a particular interest in football safety. As Steve Reid, a battling 180-pound guard, he was captain and All-American on Northwestern's 1936 team, the last Wildcat squad to win a Big Ten championship.

So back before Alex Agase succeeded Ara Parseghian as head coach, a player a year in a "contact" position put on the electronic equipment and helped medical science while he booted for first down yardage or rushed the passer.

Fullbacks Bill Swingle and Steve Murphy, halfbacks Woody Campbell and Bob Olson (then a pre-med student; not a doctor), defensive tackle Bill Galler and Voorhees took turns wearing the transmitter. Another undergraduate will be wired up this season.



WIRED PLAYER—Volunteers for Northwestern's electronic helmet study have to put up with some discomfort. Halfback Bob Olson has electrodes attached to shaved parts of his skull. Olson, an All-Academic team member as a pre-med student in 1967, is now a doctor.

Being the guinea pig was an inconvenience to say the least. Patches of hair had to be shaved from the player's head to bare places to paste the electrodes. And the helmet couldn't be removed once it was put on.

Campbell's teammates recall how Woody had to suffer with his headgear on during a September game at Florida when the temperature reached 104 degrees on the field. Fans, of course, suspected the Wildcat halfback was balmy when he was the only man on the field who didn't yank off his helmet during time outs.

It's been a very thorough, very careful study. Then last December, Dr. Reid published his findings in a medical magazine.

The "hits" that players such as linebacker Voorhees sustained, Reid wrote, were transmitted to electroencephalographic recording devices in the pressbox. Game film, with voice commentary, synchronized the player's actions with the telemetry data.

The electronic equipment, Reid explained in his report, measured both the intensity (in G's) of the player's impact and also the duration (in milliseconds) of the contact.

In seven Big Ten games in 1970, for example, Voorhees sustained 169 impacts to the head that ranged between 40 and 290 G's and lasted from 20 to 420 milliseconds.

One of these "hits" caused a concus-

sion. The report includes stop-action sequence pictures of the play from game films plus the encephalographic readings recorded in the press box.

Voorhees spun away from a blocker, whipping his head toward the piston-pumping knee of the plunging ball carrier. Crunch! 188 G's of peak acceleration to the left frontal area of the head. That acceleration persisted for 310 milliseconds.

The study is by no means finished, Reid said. For example, Reid notes that Voorhees in 1970 sustained four measured impacts that were "harder" (up to 230 G's) and "longer" (up to 400 milliseconds) than the play that caused the concussion. Why, he wonders, did one of these five hits cause concussion and not the other four?

"There were 26 football deaths last year (all games: college, high school, sandlot) and 90 per cent of them were caused by head and neck injuries," Reid said. "We have the data on this one concussion. We need to study the near-concussions and the accumulative result of this contact on players."

Reid explained that "The automotive industry is following this study with great interest. There have been laboratory experiments with gelatin-filled skulls, but people don't volunteer to take hits of this type. This football field is our laboratory... we want to continue studying how they react when and after they're hit."

NAU OFFICIALS



Dr. J. Lawrence Walkup
NAU President



Dr. Norman Johansen
Director of Athletics



Dr. Lyle Mullens
Faculty Representative



Ed Peasley
Head Football Coach



Mike Nesbitt
Head Trainer



Don Anderson
Offensive Backs



Ken Sawin
Linebackers



Scott Schuhmann
Offensive Line



Al Worley
Defensive Backs



Rich Bartnett
Graduate Assistant



Mike Boettcher
Graduate Assistant



Rick Gordon
Graduate Assistant



Terry Hudgens
Graduate Assistant



Don Jones
Graduate Assistant



John Nuttall
Graduate Assistant

FREE!

ONE (1) FREE CHILI-CHEESE DOG AND
ONE (1) FREE ORDER OF FRIES

FREE!

CLIP THIS
COUPON



Der Wienerschnitzel

**Very Big
in
Hot Dogs**

1320 E. SANTA FE
Limit 1 Per Customer Per Week
EXPIRES DEC. 15, 1972

TODAY'S GAME

After a slow start offensively, Trinity's Tigers have added a lot of "go power" to their offense over the last two weekends, beating McMurry of Abilene, Tex., 38-6 on the road last week and the week before that Texas Lutheran fell, 42-0.

Trinity's defensive unit also stands out. The Tigers have allowed just 43 points in the



By Jim Fox
KQAI-TV

first five games -- an average of 8.6 points a game, making Trinity the best defensive team on NAU's schedule at mid-season. North Dakota State and Hawaii are giving up 11 points a game to rank second.

Making the Tiger offense click are junior quarterback Charles Bump, 6-2, 210-pound junior; split end Bill Hodge, 6-1, 170-pound senior who is after his fourth varsity letter; and running backs Greg Oliver, 6-0, 190-pound senior and Earl Costley, 5-7, 175-pound junior.

Costley's younger brother, Edward, is the key defensive player for the Tigers. The 6-1, 180-pound sophomore middle linebacker is averaging around 12 tackles a game.

This will be the second meeting of the two schools. Last year Trinity rallied to gain a 14-all tie at the half and go on to win, 42-21. Last year Trinity was 8-2 on the season and shared the Southland Conference title with Louisiana Tech and Lamar (Texas) Tech, each with 4-1 records.

In that 13-10 win over Southwestern Louisiana, Trinity's punter, Steve Laidlaw ran 57 yards with a fake punt for a touchdown on the final play of the first half, so Trinity has a "bag" full of tricks.

Senior linebacker Joe Hernandez, 5-10, 187-pounder from Nogales, Ariz., was NAU's defensive player of the week for his superb effort against Montana State. This marks the third time this fall -- in five games -- that Hernandez has been NAU's outstanding defensive player.

Offensively, NAU's player of the week was Junior flanker Rick Wilson, 6-0, 183-pound transfer from Arizona Western College. Against Montana State, Wilson caught three passes for 79 yards and one TD. Selected as the 110-percent player of the week was Hernandez.

NEXT OPPONENTS: Next week NAU will be at home to take on always tough Weber State College in a Big Sky Conference game before a Band Day crowd. During the first three weeks of the season, Weber, who got a late start, is 1-2. Weber beat Idaho 26-10, then fell to Boise, 49-16; and Montana, 12-7. Trinity will be at home next week to meet Northwood of Texas.

110-PERCENT AWARD WINNERS THIS FALL: Scott-Free (LB) North Dakota State; Rosie Van (FL) San Francisco State; (no one) Montana; Jim Bullard (RB) New Mexico Highlands; Joe Hernandez (LB) Montana State University.

NAU'S 1972 OPPONENTS RECORDS

TEAM	W	L	T	PTS	OPP.PTS
North Dakota State	5	1	0	165	67
San Francisco State	1	4	0	76	150
University of Montana	2	3	0	72	128
New Mexico Highlands	1	4	0	112	152
Montana State	3	2	0	102	118
Trinity Texas	4	1	0	105	43
Weber State College	1	2	0	49	71
California-Northridge	3	1	0	153	55
Louisiana Tech	5	0	0	144	57
University of Hawaii	3	0	0	193	33
Boise State College	3	1	0	127	74

LAST WEEK'S SCORES: North Dakota State 42, Northern Iowa 0; California-Davis 47, San Francisco State 32; Montana 12, Weber State 7; Cameron Oklahoma 47, N.M. Highlands 32; Montana State 23, NAU 9; Trinity 38, McMurry, Texas 6; Fullerton 41, California-Northridge 39; Louisiana Tech 35, Texas-Arlington 14; Hawaii 21, Peppert Sound 10; Cal Poly San Luis Obispo 26, Boise State 21.

1972 NAU SCHEDULE

- Sept. 9 North Dakota State 14, NAU 7
- Sept. 16 NAU 31, San Francisco State 10
- *Sept. 23 Montana 40, NAU 17
- Sept. 30 NAU 35, N.M. Highlands 26
- *Oct. 7 Montana State 23, NAU 9
- Oct. 14 Trinity, Tex. (Homecoming)
- *Oct. 21 Weber State (Band Day)
- Oct. 28 At California-Northridge
- Nov. 4 Louisiana Tech (Mom-Dad's Day)
- Nov. 11 At University of Hawaii
- *Nov. 18 Boise State College

* -Big Sky Games

1972 TRINITY SCHEDULE

- Trinity 9, Southwest Texas State 7
- Texas A&I 20, Trinity 3
- Trinity 13, Southwestern Louisiana 10
- Trinity 42, Texas Lutheran 0
- Trinity 38, McMurry Texas 6
- Oct. 14 Trinity at NAU
- Oct. 21 Northwood, Texas
- Oct. 28 East Central Okla.
- Nov. 4 McMurry, Texas
- Nov. 11 At Wichita State
- Nov. 18 At Arkansas State

BIG SKY STANDINGS

TEAM	Conference		All Games	
	W	L	W	L
Montana State	2	0	3	2
Montana	2	0	2	3
Boise State	1	0	3	1
Weber State	1	2	1	2
Northern Arizona	0	2	2	3
Idaho	0	2	1	3
Idaho State	0	0	2	2

LAST WEEK'S SCORES

- *Montana State 23, NAU 9
- *Montant 12, Weber State 7
- Idaho State 21, Eastern Michigan 14
- Washington State 35, Idaho 14
- Cal Poly (SLO) 26, Boise State 21

* -Conference Games

THIS WEEK'S SCHEDULE

- Trinity (Tex.) at NAU
- Navada-Reno at Boise State
- Northern Illinois at Idaho
- *Montana State at Weber State
- *Montana at Idaho State

* -Conference Games

Moment of Glory

PHOENIX, October 28, 1932 ---- Northern Arizona University (Flagstaff Teachers College) drove 65 yards in the fourth quarter today to score and upset the University of Arizona, 7-6, in a Border Conference Football game.

Edgar "Mutt" Ford initiated the drive as he passed 46 yards to end Russ Jackson to the Wildcat 19. Later on a fourth-and-eight from the Arizona eight-yard line, Ford passed to Jackson for the TD and Jiggs Insley passed to Jackson for the winning Conversion. The Lumberjack team outgained the Wildcats in total yards, 172-119.

The Coconino Sun in Flagstaff reported that the Wildcat "game plan" was two runs, a pass then punt. Coaching the NAU team was Rudy Lavik.

Members of that winning effort were Frank Armstrong, Cecil Mulleneaux, Nick Paynovich, Walter Knox, Ray Schwanbeck, Vere Hunt, Ed Evans, Ed Wacker, Warren Sitrine, Enoch Smith, Frank Brickey, Russ Jackson, Frank Sanders, Earl Insley, Andy Horn, Ira Murphy, Irving Zaner, Edgar Ford, Earl Brimhall, Kay Hatch, Robert Frazier and Jesse Garcia.



Edgar Ford



Russ Jackson

NAU	0	0	0	7-7
UofA	0	0	0	0-6

U-A: Joe Davies, 5, run, kick blocked.
 NAU: Russ Jackson, 8, pass from Edgar Ford.
 PAT: Jackson pass from Jiggs Insley.

Andy's 774-4401
 23 N. BEAVER
 FLAGSTAFF

LIQUOR & SPORTING GOODS



QUALITY SALES & SERVICE

774-6801

17 N. Leroux

House
 of
 Sound

9 North Leroux

774-6064

KCLS RADIO
 600

The Voice
 of
 NAU Sports

HEAR PLAY-BY-PLAY

AT HOME

OR AWAY

5,000 WATTS

1972-73 NAU CENTURY CLUB MEMBERS



JOHN ALLEN Alumni	ALBERT CIRICOSTA Alumni	GRAND CANYON TRAVEL AGENCY	KARL MANGUM Attorney	JOE ROWAN Rowan's Pharmacy
WILLIAM ANDERSON NAU	ROBERT CLARK First National Bank	MR. and MRS. CECIL GRIGGS Flier Sportswear	ARTHUR MANSURE NAU	SAN FRANCISCO PEAKS HUNT CLUB
CHESTER AINSWORTH	DUDLEY CLEMENTS All-American Distributing Co.	LOLA HALL NAU	DWIGHT MAYO NAU	CHARLES SAUNDERS KCLS
ED ALSUP El Paso Natural Gas	RICH COOK Friar Tucks	VINCE HAMANT Architect	JOSEPH C. MEHRHOF NAU	JOHN SCHLOTTFELD Alumni
CHARLES APT	ROBERT COOLEY NAU	MATT O. HANHILLA Alumni	MIKE MILES NAU	ELLSWORTH SCHNEBLEY Alumni
JOE ARREDONDO JPA Floor Coverings	ROBERT CLARK First National Bank	BUCKY HARRIS Continental Golf Shop	K. NOEL MILLER Accountant-Alumni	MILTON SCHROEDER NAU
JIM BABBITT Babbitt Ford	OSCAR CRICK Arizona Refining Co.	CLIFFORD HARKINS Alumni	ELWOOD MILLER Alumni	DAVID SEAMAN NAU
JOHN BABBITT Babbitts	ROBERT "BOB" CROZIER NAU-Alumni	HAROLD HARPER Harper Maytag	CLAY MOORE NAU	A. E. SHELTON NAU
PAUL BABBITT Babbitts	ART DALPAZ Dentist	CLIFTON HARKINS Alumni	LYLE MULLENS NAU	OLLIE SHULLENBARGER NAU
TED BABBITT Babbitts	RICHARD D. DAVIES NAU	MARY JANE HASKIN	LEWIS MCCOY McCoy Motors	WYLIE SMITH NAU
DICK BAGWELL Flagstaff Mortuary	BILL DAVIS Nava-Hopi Tours	L. GEORGE HERSHEY, D.O.	LEWIS McDONALD NAU-Alumni	E. HARLIN STAIRES NAU
BERT BAKER Bose-Baker Firestone	RICHARD DEEVER New York Life	JAMES HOLDER Optometrist	JESSE McMAHON Accountant	EVERETT STILES Alumni
BOB BARNES Footloam	DON DeLAP Aspen Office Supplies	HOLIDAY INN Jerry Storms	MONTE VISTA HOTEL NAU	CARL SUNDQUIST Northern Arizona Refrigerator Sales and Service
GEORGE BELL Bell Contracting Co.	BART DEL DUCA Contractor	EUGENE HUGHES NAU	JOHN HUGHES Southern Union Gas	VIRGIL SWANBERG First National Bank
JAMES BIGLIN NAU	ROBERT DICKESON NAU	JOHN HUTCHISON Footloam	LEE HUTCHISON Footloam	HOWARD TAFT Howard's Liqueurs
RALPH BILBY Babbitts	JACK B. DIXON NAU	RUSS JACKSON Alumni	RONALD NEWMAN	TENOCHTITLAN Frank Garcia Trini Garcia
BOB BLASER Southwest Forest	WARREN DOWD Sage Food	WESLEY JACKSON	RED NEWELL NAU	CECIL THOMAS IBM
SAM BLISS NAU	BOB EVANS Alumni	MAX JAMES NAU	DON NIELSON Arizona Refining Co.	J. LEE THOMPSON
RON BOATWRIGHT Klick Distributing	BILL EGAN Wilson, Compton, Egan - Atto	JIM JAMISON Contractor	BOB NIMMONS Babbitts	L. V. THOMPSON Tyrrell Chevrolet-Buick
W. V. "BILL" BORCHERING Valley National Bank	JOHN FAUGHT Miladies	AL and HILDA JENNINGS NAU	KATHARINE NUTT NAU	WILLIAM THOMPSON NAU
ERVIN BOREN Highway Department	CHARLES FAUSET NAU	NORMAN B. JOHANSEN NAU	ONE HOUR "MARTINIZING" Larry Loven John Holmes	TOM TISSAW Tissaw's
SAM BOROZAN Alumni	J. MICHAEL FLOURNOY Attorney	J. WHEELER KEARNEY Kearney News Agency	DONALD OVERTURF NAU	WEST TOWNSEND Alumni
BRUCE BOWMAN NAU	DARRELL AND DONNA FOSBERG Der Wieneschnitzel	ROY B. KILLINGSWORTH Killingsworth Enterprises, Inc.	SAM PAPPAS CPA	ELTON TURNER Valley National Bank
ELDON BOWMAN NAU	JAMES FOX KOAI-TV	HAROLD LARSON NAU	DWIGHT PATTERSON Baseline Cattle Co.	J. LAWRENCE WALKUP NAU
CHARLES BOYER Boyer Metal Co.	M. G. FRONSKA, M.D.	KNOLES BAKERY Bob Knoles	J. C. FEW	DOUG WALL Attorney
JAKE BRACKER Alumni	BILL GAYLORD Dentist	MR. and MRS. HEARTSTILL KORNEGAY	ERNIE PHILLIPS Arizona Title and Trust	JACK WEISEL Arizona Supply Co.
E. JAMES BRADY KEDS Radio	LOREN GEISINGER Ed Post Realty	E. RUSSELL KUCHEL NAU	LAVERNE PITCHER NAU	JOHN WETTAW NAU
BUCK BROWN Brown Contracting Co.	ELLERY GIBSON NAU	GEORGE W. KYTE NAU	RUSS PINKERMAN Flagstaff Sportsman	ALFRED WOHLSCHEGEL Alumni
KEN BROWN KCLS Radio	JERRY GIBSON Huffer Oil Co.	RAY LARKEY Contractor	MIKE PURCELL Flagstaff Vending	MERRILL YOUNG Coors North
EARL CANIFORD	ED GLEDHILL Arizona Public Service	JAMES LEE Arizona Bank	STAN RASMUSSEN NAU	EDWARD ZIEGLER E-Z Janitor Supply
CHARLES CASEBEER, M.D.	VIRGIL GILLENWATER NAU	PETE LINDEMANN Dentist	WOODY RHODES Rosetteer Cocktail Lounge	DAROLD SHUTT NAU
VERNON CAVE Flagstaff Glass	RICHARD GOPLIN Farmer's Insurance	G. R. LOPP	EDMUND RICKARD NAU	
CLAYTON CHANCE NAU	ROLLIN GOSNEY Dentist	JOHN LUKE Arizona Bank	JOSEPH ROLLE NAU	
DREW CHRISTIE NAU	HAROLD WEAVER Southwest Forest	LUMBERJACK RESTAURANT Bob Morrison	FRANK ARMSTRONG Alumni	
ANDY'S LIQUORS Andy Bustin	DAVID BIDDINGER	CELIA RICKARD	JOSEPH RENO, MD Surgeon	
COL. R. H. MAPPLE Hawaii (U.S.M.C. - Ret.)		R. R. EVANS Wholesale Distributors		

1972 LUMBERJACK FOOTBALL ROSTER

NO.	NAME	POS.	HT.	WT.	YR.*	Hometown-High School-or JC
3	Gary Galati	PK	5-10	170	Jr.-2	Tucson (Amphitheatre)
10	Chip Ellwanger	QB	6-2	195	Jr.-1	Kingman (Kingman HS)
11	John Carroll	DB	6-0	190	Sr.-1	Ftn. Valley, Calif. (Golden West JC)
14	Ed Jones	DB	5-10	160	Jr.	Mechanicsburg, Pa. (Trinity HS)
15	Vince Creviston	QB	5-10	165	Jr.-1	Bisbee (Bisbee HS)
16	Bud Kane	QB	6-1	180	Jr.	Riverside, Calif. (Riverside JC)
17	Rick Wilson	WR	6-0	183	Jr.	Philadelphia, Pa. (Ariz. Western)
20	Rosie Van	WR	5-7	160	Sr.-3	Winslow (Winslow HS)
21	Randy Wikert	DB	5-11	175	Sr.-1	Long Beach, Calif. (Long Beach CC)
24	John Kmetovic	DB	5-9	170	Sr.-3	Palo Alto, Calif. (Cubberley HS)
25	Dave Howard	DB	6-1	165	Jr.	Riverside, Calif. (Riverside JC)
27	Al Gilpin	DB	6-1	185	Jr.	Riverside, Calif. (Riverside JC)
28	Darrell Mitchell	RB	5-11	185	Jr.	San Francisco, Calif. (S. F. CC)
29	Rufus Mullen Jr.	DB	6-0	170	Sr.-1	Artesia, Calif. (Palo Verde JC)
30	Vic Bonolo	FB-LB	6-1	195	Jr.	King Park, L. I., N. Y. (Ariz. Western)
32	Robert Richey	WR	6-2	185	Jr.	Phoenix (Phoenix College)
33	Randy Carter	FB	6-2	220	Jr.	Las Vegas, Nev. (Mesa CC)
34	Milford Suida	FB	5-10	213	Jr.-2	Tucson (Amphitheatre HS)
35	Tom Rogers	FB	5-11	200	Sr.-1	Santa Ana, Calif. (Fullerton JC)
36	Steve Martin	DB	5-11	180	Sr.-1	LaPuente, Calif. (Mt. San Antonio JC)
38	Willie Perry	RB	5-9	190	Jr.	Gardena, Calif. (E. Los Angeles JC)
39	Shannon Lewis	LB	6-1	191	Jr.	Douglas (Arizona Western)
42	Bo Williams	RB	6-1	185	Jr.	Gainesville, Tex. (Napa, Calif. JC)
44	Bill Wagner	LB	5-10	197	So.-1	Tucson (Salpointe)
45	Major Smith	DB	6-1	175	Sr.	Pennsauken, N. J. (Pennsauken High)
46	Jim Bullard	RB	6-0	180	Jr.-2	Camp Verde (Camp Verde HS)
47	Rick Howard	RB	6-1	185	Jr.	Yuma (Ariz. Western)
48	Chuck Apt	DB	6-0	170	Fr.	Iola, Kans. (Iola HS)
49	Scott Free	LB	5-10	200	Sr.-1	Vista, Calif. (Palomar JC)
50	Joe Sanchez	C	6-3	230	Sr.-3	Superior (Superior HS)
51	Joe Hernandez	LB	5-10	187	Sr.-3	Nogales (Nogales HS)
52	Al Cudlice	LB	6-1	185	So.	Port Angeles, Wash. (Sequim HS)
53	Monte Beck	LB	6-0	210	Jr.	Riverside, Calif. (Riverside JC)
54	Rich Wilson	LB	6-2	210	So.	Berkeley, Calif. (Laney JC)
55	Terry Hoerner	C	6-3	210	So.-1	Scottsdale (Brophy HS)
56	Charles Gover	LB	6-2	195	So.-1	Chinle (Chinle HS)
57	John Miller	C	6-3	255	Sr.-2	Tucson (Catalina HS)
59	Phil Hildebrand	LB	5-9	185	So.	Bowie (Bowie HS)
60	Tim Sanford	OG	5-10	225	Jr.-2	Phoenix (St. Mary's)
62	John Cometh	DT	6-2	210	Jr.-1	Prescott (Prescott HS)
63	Randy Bishop	DT	6-4	230	Jr.	Scottsdale (Mesa CC)
64	Bob Donahue	OG	6-2	205	Sr.-1	Encino, Calif. (Pierce JC)
65	Reuben Rios	OG	5-10	225	So.	Douglas (Douglas HS)
66	Paul Edge	DT	6-2	230	Jr.	San Diego, Calif. (San Diego Mesa JC)
67	Gary Hitterman	OT	6-3	225	So.-1	Phoenix (West HS)
68	Bob James	DT	6-5	240	Fr.	Eloy (Santa Cruz HS)
69	Alvin Moreira	OG	5-10	226	Jr.	Honolulu, Hawaii (Eastern Ariz.)
70	Steve Combs	DT	6-1	230	Sr.-1	Phoenix (Glendale CC)
71	Gilbert Ramos	OT	6-5	230	So.-1	Tucson (Tucson HS)
72	Bob Rickert	OG	6-1	215	Jr.	Scottsdale (Mesa CC)
73	Mike Ivey	DE	6-2	218	Jr.	Winslow (Ariz. Western)
74	Jim Volpe	OG	6-2	215	Sr.-3	Yuma (Kofa HS)
75	George Gagele	DT	6-2	228	So.	Prescott (Prescott HS)
76	Sean Gaffney	OT	6-2	230	Sr.-1	Covina, Calif. (Mt. San Antonio JC)
77	Bill Seabrook	DE	6-1	198	Jr.	Cahreston, N. C. (Mesa College Colo.)
78	Bruce Ivor	DT	6-3	218	So.-1	Phoenix (Central HS)
79	Randy Jagger	OT	5-11	220	Sr.	Long Beach, Calif. (Long Beach CC)
80	Jude Jenners	DT	6-3	220	Sr.-1	Phoenix (Glendale CC)
81	Rich Cariberg	WR	6-1	178	So.	Benson (Benson HS)
82	Walt Mannon	WR	6-3	170	Sr.-2	Portsmouth, Ohio (Portsmouth HS)
83	Todd John	TE	6-4	200	So.	Benson (Benson HS)
84	Tom Ramsey	DE	6-5	230	Sr.-3	Yuma (Yuma HS)
85	Kino Flores	DE	6-2	210	Jr.-2	Winkelman (Hayden HS)
86	Ken Sherman	TE	6-3	215	Jr.	Marana (Phoenix College)
87	Bob Chandler	DE	6-3	235	Jr.	Rockford, Ill. (Rockford CC)
88	Kelly Schultz	TE	6-2	210	Sr.-1	Palo Alto, Calif. (Foothills JC)
89	Eric Schrader	DE	6-1	200	So.-1	Tucson (Sahuaro HA)

* - Letters won at NAU.

"TRY TO REMEMBER"



1972 HOMECOMING DEDICATEE --- Dr. Charles Fauset

PAST DEDICATEES

- 1971 -- Dr. Virgil Giljenwater
- 1970 -- Dr. Max Baseman
- 1969 -- Mr. Ken Derifield
- 1968 -- Miss Althea Ragsdale
- 1967 -- Mrs. Hilda Dushek
- 1966 -- Dr. Minnie Roseberry
- 1965 -- Mr. Win Hensley
- 1964 -- Dr. Lewis McDonald
- 1963 -- Mr. Ralph Holly
- 1962 -- Dr. Margaret Carrigan
- 1961 -- Dr. Charles Meister
- 1960 -- Pres. and Mrs. Walkup
- 1959 -- Dr. J. Harvey Butchart
- 1958 -- Dr. M.G. Fronske
- 1957 -- Dr. and Mrs. Eldon Ardrey
- 1956 -- Dean Joseph Rolle
- 1955 -- Mr. A.M. McCreary
- 1954 -- Dr. L.J. Botelman
- 1953 -- Dr. Tom O. Bellwood
- 1952 -- Mr. Chester F. Deaver
- 1951 -- Mrs. Lora Maxwell
- 1950 -- Mr. Melvin Hutchinson
- 1949 -- Dr. Lacey A. Eastburn
- 1948 -- Dr. Agnes Allen
- 1947 -- Dr. William Tinsley
- 1946 -- Mrs. Margaret "Mother" Hanley
- 1941 -- Lady Mary Beckwith
- 1938 -- Mary Boyer
- 1936 -- Mrs. Margaret "Mother" Hanley

1972 HOMECOMING ROYALTY

Northern Arizona University's student body has dedicated its 1972 Homecoming Celebration to Dr. Charles Fauset, Dean of NAU's College of Education.

As tradition calls for, NAU's Chain Gang, keepers of tradition, went to the Fauset home last Sunday (Oct. 8) and sold the Fausets the first Homecoming button with the dedicatee's picture on it.

Since then, the last week has been an event-packed week, one the Fausets will remember for a long time. The Fausets were taken to dinner Sunday night, participated in the Coronation Ball Tuesday night and were the center of attention at the annual Dedicatee Banquet Thursday night. Today the Fausets participated in the big parade in downtown Flagstaff and will be honored at halftime of the football game.

Dr. Fauset came to NAU in 1950 and was named Dean of the College of Education when NAU became a university in the spring of 1966; however, he has served in the same function since 1958, that of developing top-notch teachers and administrators for America's schools.

He earned his Bachelor degree in 1939 from Indiana State University, his master's from the same institution in 1948 and his doctor of education degree from the University of Indiana in 1953.

Finalist for the 1972 Homecoming Queen included Maral Vischer, senior pre-med major from Tucson; Judy Winchester, senior elementary education major from Mesa and Gloria Grant, senior art major from Chinle. King finalist included Kent Brooks, senior engineering major from Ft. Dodge, Iowa; Jim White, senior education major from Redlands, Calif., and Larry Lemke, senior physical education major from Orange, Calif.



1972 HOMECOMING ROYALTY --- King Kent Brooks and Queen Judy Winchester

TODAY'S 'HONOR ROLL'



Win Hensley, 1933



Ellsworth Schnebly, 1955



Emil Nasser, 1947

ALUMNI SERVICE AWARDS: Win Hensley, registrar at NAU for 28 years before his retirement this past summer, was on hand to see much of NAU's growth. Besides being a staunch NAU booster, Hensley was active in community affairs. Ellsworth Schnebly, a resident of Sedona, has long been a booster of his alma mater. Schnebly is a retired teacher and administrator. Bob Barber, not pictured, is the recipient of the Junior Service Award. Barber is a 1963 graduate and is now a dentist in Tucson, where he is active in the local NAU alumni chapter. Emil Nasser, right, is being honored today with NAU's Achievement Award for his outstanding service to youth. Now in his 26th year as head football coach at Winslow, Nasser is Arizona's winningest high school coach.



Dr. John Pederson



Millard Kinney



James Elliott, 1930

DISTINGUISHED FACULTY: Dr. John Pederson and Mel Kinney today were awarded with distinguished faculty awards, presented by the NAU Alumni Association, at the noon luncheon at the South Center Ball Room. Pederson has been at NAU since 1950 and served four years as head football coach and has been ski coach since his arrival at NAU. He has been instrumental in the rise of driver education in Arizona. Kinney came to NAU in 1955 and is known best for his work with the NAU choral groups. His singers have been on two USO tours. JAMES ELLIOTT, right, will receive the Distinguished Citizen Award on Mom and Dad's Day, Nov. 4. The 1930 NAU graduate served in the Arizona House of Representatives for more than 12 years between 1945-57.

1972 NAU HOMECOMING SCHEDULE

SATURDAY SCHEDULE

- 8-10 A.M. Alumni registration at University Center.
- 8:30 A.M. Alumni-Faculty coffee at University Center.
- 10:30 A.M. Parade through downtown Flagstaff.
- 12-Noon Alumni Awards Luncheon at South Center Ball Room.
- 2:30 P.M. Pre-Game activity by NAU's 120-member band.
- 3 P.M. NAU-Trinity (Texas) University football game.
- 6 P.M. Alumni get together at Elks Club, North San Francisco.
- 8 P.M. Student dance, South Ballroom (Mad Anthony)
- 9 P.M. Alumni Dance at Elks Club

SUNDAY SCHEDULE

- 8-10:30 A.M. Alumni Continental Breakfast, all NAU Cafeterias.
- 10:30 A.M.-2:30 P.M. NAU Art Gallery Show.

SPECIAL EVENTS (Saturday)

NAU Forestry Alumni-Moeller Center at Munds Park, after football game.
 Business Administration Alumni will meet at Elks Club after the game.
 Class of 1962 will have reunion at Lumberjack Cafe after the game.
 Sigma Pi Alums contact Joe Cox at (774-8112) 1825 N. Meadow Lark Dr.
 The Alumni Headquarters is the Americana Motel in East Flagstaff.

CHAIN GANG



PLANNING HOMECOMING

Long before today's festive Homecoming celebration, these four NAU students spent a lot of hours at the "drawing board", planning for today's gala event. They are, left, Ab Jackson (Willcox), Mike Lopez, Tucson (Pueblo), Debbie Cook (Agoura, Calif.) and Gary Cruze, Tucson (Amphitheatre). Jackson and Miss Cook are co-chairmen for Homecoming while Cruze is parade marshal and Lopez is ASNAU councilman for special events.

When alumni return to visit their campus they find that many of the traditions which helped lay a solid foundation when NAU was known as Northern Arizona Normal School are still around today.

The face of the campus has changed and so have the personnel --- it's these traditions that provide a common ground for all to meet and discuss NAU.

Over the last 45 years, Chain Gang at NAU has kept tradition alive and active. These 13 NAU males and their Sweetheart help instill NAU's traditions into new students each fall.

Today's game is just another of the rugged '72 slate the NAU football team has been asked to challenge. Only one of this fall's 11 football foes has not been nationally ranked over the last few years; however, it's been this caliber of opposition that has sent 35 former NAU stars into the professional ranks.



1972-73 CHAIN GANG

Members of Chain Gang, keepers of tradition at NAU for the 1972-73 school year are, front row, left, John Bridger, Wellton; Dave Schwanenberger, Tucson (Palo Verde), treasurer; Gary Cruze, Tucson (Amphitheatre), president; Debbie Cook, Agoura, Calif., sweetheart; Mark Champagne, Saginaw, Mich., vice-president; Ward Bell, Des Moines, Iowa, and Mike Lopez, Tucson (Pueblo). Back row, Paul Chadwell, Sonora, Calif., Jon Perry, Deep River, Conn., Joe Sanchez, Superior, Tom Ramsey, Yuma (Yuma High), Kent Brooks, Ft. Dodge, Iowa, Ab Jackson, Willcox, and Gary Galati, Tucson (Amphitheatre). Not pictured is advisor Bob Crozier.

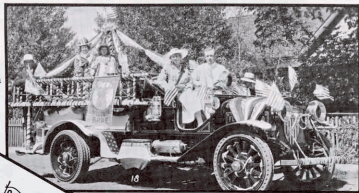
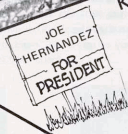
"TRY TO REMEMBER"

HOMECOMING

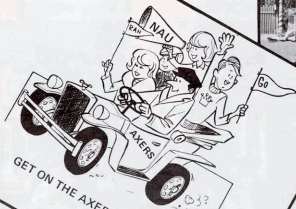
1972



KEEP ON TRUCKIN AXERS



A 1930'S HOMECOMING



GET ON THE AXER BANDWAGON

GO NAU



RALLY AROUND THE 'JACKS

1972 TRINITY TIGERS FOOTBALL ROSTER

NO	NAME	POS	HT	WT	CLASS*	HOMETOWN	NO	NAME	POS	HT	WT	CLASS*	HOMETOWN
2	Paul Solon	QB	6-1	175	Fr-HS	Altuzarcourt, N.M. (Academy)	52	Ruben Bravo	LB	6-0	205	Fr-HS	San Antonio (Hilandale)
3	Jimmy Witwiski	QB	6-2	175	So-Sq	El Paso (Andras)	53	Mike Kelly	OG	6-2	200	Jr-Sq	Houston (Memorial)
5	Charles Bump	QB	6-2	220	Jr-1L	San Antonio (E. Central)	54	Joe Turner	C	6-6	240	Jr-2L	Tularosa, N.M.
6	Billy Lynch	QB	5-8	172	So-1L	Canadian	56	Ed Turner	C	6-5	210	Sr-2L	Tularosa, N.M.
7	Fred Voorhees	DB	6-0	175	Jr-2L	Roswell, N.M.	61	Steve Cordes	OG	5-10	185	So-Sq	Arlington
20	Earl Costley	TB	5-7	175	Jr-2L	Mart	62	Bruce Beator	OG	6-0	235	Sr-3L	San Antonio (Marshall)
22	Richard Ramirez	TB	5-11	165	So-1L	Poth	63	Glenn McCreeless	DG	5-11	185	Fr-HS	San Antonio (Highlands)
24	Fred Spears	WB	5-10	175	Jr-2L	Crestview, Fla.	66	Max Colburn	DG	5-11	225	Sr-2L	Fort Worth (Arl. Hts.)
25	Stan Davis	WB	6-0	165	So-Sq	Houston (Memorial)	68	Joe Neadros	OG	6-1	218	Sr-1L	Victorville, Calif.
27	Hector Luna	WB	5-9	175	So-Sq	El Paso (Ysleta)	70	Bill Keresztury	OT	6-4	265	Sr-3L	Doyltestown, Pa.
30	Edward Costley	LB	6-1	180	So-1L	Mart	71	Steve Majka	DT	6-2	305	Sr-2L	Navajo, Calif.
31	Steve Laidlaw	DB	5-11	185	Sr-1L	Inglewood, Calif.	73	Joe Rafferty	OT	6-2	210	Jr-Sq	Houston (Sp. Branch)
32	John Unverferth	DB	6-0	180	Sr-1L	Fullerton, Calif.	74	Louis Hymel	OT	6-2	200	So-Sq	San Antonio (Antoninian)
34	Bobby Wilton	LB	6-0	180	Jr-1L	Balton	75	Danny Johnson	DT	6-4	240	Jr-Tr	Victorville, Calif.
35	Ronnie Kirkwood	DB	5-11	155	Jr-1L	Pecos	77	Michael Quinn	DT	6-0	220	Fr-Sq	W. Homestead, Pa.
36	Jack Milligan	LB	5-11	200	Jr-Tr	Mission, Kansas	78	John Cunningham	OT	6-0	240	Sr-1L	San Antonio (TMI)
37	Mike Scott	DB	5-8	150	Jr-2L	Dallas (Samuel)	80	Bill Leighton	OE	6-0	200	Fr-Sq	Utopia
38	David Lacey	LB	5-10	200	Jr-Sq	San Antonio (C. Catholic)	81	Bill Hodge	OE	6-1	170	Sr-3L	Carrollton (turner)
42	Tinker Tomlinson	LB	6-0	200	So-Sq	Rocksprings	82	Joe Von	OE	6-1	196	Jr-Sq	San Antonio (Churchill)
43	Greg Holt	FB	5-10	185	Jr-Sq	Hot Springs, Ark.	83	Bruce Semlinger	OE	6-1	200	Jr-2L	San Antonio (Sam Houston)
44	John Simms	FB	6-0	190	Sr-2L	Austin (S.F. Austin)	84	Roy Ramirez	OE	6-0	210	Jr-Sq	San Antonio (Jefferson)
45	Greg Oliver	FB	6-0	195	Sr-2L	San Antonio (Brackenridge)	89	Art Simms	DE	6-3	210	Sr-1L	Apple Valley, Calif.
46	Thomas Hill	LB	5-10	202	So-Sq	Canadian							

* Letters won at Trinity (24)

NAU'S ALL-BIG SKY FOOTBALL PLAYERS

1971: Danny White (running back); John Nuttall (offensive guard) both second team. Honorable mention: Walt Mannon (wide receiver), Dick Baserman (wide receiver), Jim Volpe (offensive tackle), Tom Ramsay (defensive tackle), Rufus Mullen (cornerback) and Mike Boettcher (linebacker)

1970: Mike Boettcher (linebacker), first team. Honorable mention: Doug Baar (offensive tackle), John Nichols (offensive tackle), Bill Tate (fullback), Steve Maier (split end), and Jim Bennett (defensive back).



LARRY LOVEN

LARRY AND JOHN
BACK THE AXERS



JOHN HOLMES

TIGER PLAYERS, OFFICIALS



Dr. Duncan Wimpress
President



Warren Woodson
Head Coach-AD



Charlie Bump
(5) Quarterback



Earl Costley
(20) Tailback



Edward Costley
(30) Linebacker



Steve Laidlaw
(31) Safety



Trinity Tiger



Bruce Bealor
(62) Guard



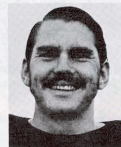
Bill Keresztury
(70) Tackle



Steve Majka
(71) D. Tackle



Roy Ramirez
(84) End



Art Simms
(89) End

Tissaw's

109 N. Leroux

Downtown Flagstaff

774-2960

- Athletic Supplies
- Team Discounts
- Trophies
- Custom Engraving
- Custom Lettering on
Sweatshirts, Jackets, etc.
- Converse Shoes
- Addidas Shoes
- Spot-Built

THE UNIVERSITY IN THE SUN

Trinity of Texas -- "The University in the Sun" -- has drawn national acclaim for its imagination and bold undergraduate curriculum, the Trinity Plan.

Under the Trinity Plan, each incoming freshman designs his own personal degree program with assistance from a faculty advisor, making it entirely possible that no two students have the same study plan.

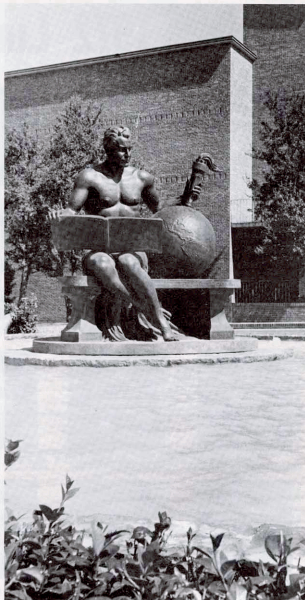
Most classes are small at Trinity of Texas with a student to faculty ratio of 14 to one, and the University offers coursework in 32 undergraduate and 23 graduate areas.

Founded in Tehuacana by Texas Presbyterians in 1869, Trinity moved to Waxahachie in 1902 and to San Antonio in 1942. In 1952, the University activated the 107-acre Skyline Campus overlooking downtown San Antonio. On this high ground (known as Trinity Hill) just four miles north of the historic Alamo 43 major buildings have been constructed, each with its own dramatic and distinctive architecture. And another is soon to be added -- the George H. Coates University Center.

As Trinity enters its 104th academic year in September, the University will be directed by its 15th president, Dr. Duncan Wimpress. Vice President for Academic Affairs and Dean of the University Bruce Thomas is the chief academic officer and Trinity's senior vice president. Dr. Gail E. Myers serves as Dean of the College of Arts and Sciences, and Dr. Leonard Duce is Dean of the Graduate School.

After having tied with Louisiana Tech University and Lamar Tech University (Texas) last year for the Southland Conference football title, Trinity pulled out of the conference and is now playing as an independent and football scholarships will be allocated on a "need" basis only.

Trinity's 4-1 record puts it well on the way to a second consecutive impression season under the direction of Warren Woodsin. Last year the Tigers were 8-2.



CHAPMAN GRADUATE CENTER

FOLLOW THE

LUMBERJACKS
in the
ARIZONA DAILY SUN
Sports Section

Channel 2

FLAGSTAFF

NBC

KOAI - TV

WATCH "AXER ACTION"

SPONSORED BY
SOUTHWEST FOREST INDUSTRIES

THURSDAY NIGHTS 6-7 P.M.

1972 Lumberjacks



(3) Gary Galati, pk



(10) Chip Ellwanger, qb



(11) John Carroll, db



(14) Ed Jones, db



(15) Vince Creviston, qb



(16) Bud Kane, qb



(17) Rick Wilson, wr



(20) Rosie Van, wr



(21) Randy Wikert, db



(25) Dave Howard, db



(26) John Kmetovic, db



(27) Al Gilpin, db



(28) Darrell Mitchell, rb



(29) Rufus Mullen, jr, db



(30) Vic Boniolo, lb fb



(32) Bob Richey, wr



(33) Randy Carter, fb



(34) Milford Suida, fb



(35) Tom Rogers, fb



(36) Steve Martin, fb



(38) Willie Perry, rb



(39) Shannon Lewis, lb



(42) Bo Williams, rb



(44) Bill Wagner, lb



(45) Major Smith, db



(46) Jim Bullard, rb



(47) Rick Howard, db



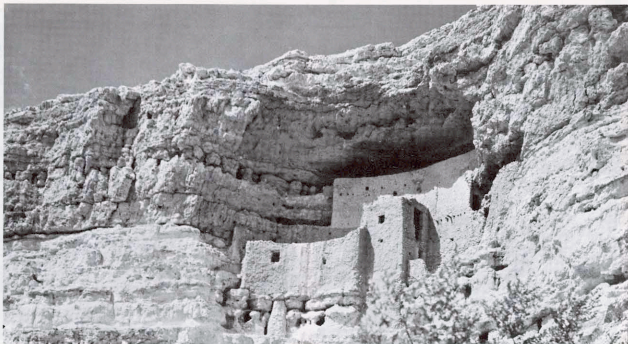
(48) Chuck Apt, db



(49) Scott Free, lb



(50) Joe Sanchez, c



MONTEZUMA'S CASTLE --- Some 50 miles south of the NAU campus lies one of the best preserved Indian Ruins in the nation, Montezuma's Castle. Near-by is Montezuma's well and irrigation system.



THE GREAT **METEOR CRATER**

Between Flagstaff and Winslow, on highway 66, lies the world's best-preserved impact-collision crater. The 570-foot deep crater was formed some 22,000 years ago and today it is studied by astronauts before journeys to the moon, earth scientists and by public school students.



UNIVERSITY BRANCH - 424 S. HUMPHREY
DOWNTOWN BRANCH - 125 E. BIRCH

the bank that makes things happen...

MEMBER F.D.I.C.



REDSKIN STAR — Rusty Tillman, who starred at Northern Arizona University from 1967-69, is one of the few "young faces" on the Washington Redskin roster. The young linebacker is in his third season with the 'Skins.



FIVE YEAR VET — Dave Cahill, recently retired from the pro grid wars, was one of the few having the talent to last out five years or more in the rugged National Football League. Cahill played with the Philadelphia Eagles, Los Angeles Rams and Washington Redskins as a defensive tackle.



RUGGED DEFENDER — In his eight years of pro football, Rex Mirich, former star NAU defensive tackle played with the Oakland Raiders, the Denver Broncos and the New England Patriots.

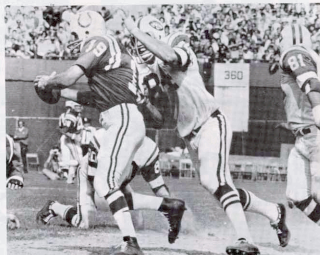


KICKING ACE — The first field goal ever kicked in a Super Bowl game was recorded by former NAU kicking star, Mike Mercer, six seasons ago for the Kansas City Chiefs. Kansas City was defeated 35-10 by the Green Bay Packers and Vince Lombardi. Mercer kicked for the Minnesota Vikings, Oakland Raiders, Buffalo Bills, Green Bay Packers and San Diego Chargers during his long NFL career.



UNITAS SACKED — Mark Lomas (84) star defensive end-tackle for the New York Jets, sacks Johnny Unitas of the Baltimore Colts as the Jets decked the Colts during the second game of the season, 44-34, behind the passing of Joe Namath. Lomas, who played at Northern Arizona University during the 1968-69 seasons, led a pass rush that sacked Unitas six times during the game. Lomas is one of 14 former NAU players in the pro ranks this fall. (Associated Press Wirephoto)

NAU PRO STARS



TROUBLESOME TRIO — Charlie Brown, left, blocks as Sonny Campbell receives a handoff from quarterback Mike Olson. Brown played with the Detroit Lions for two years while Campbell spent two years with the Atlanta Falcons and is now a member of the lions. Olson set many NAU passing marks.



Blue Ridge Lake

These man-made additions to nature, created by dams built by Phelps Dodge, are a pleasant by-product of Arizona copper production.



Show Low Lake



Horseshoe Dam

**phelps
dodge**
Corporation

Standing with Arizona
for 92 years

AJO • BISBEE • DOUGLAS • METCALF • MORENCI
Also at Tyrone, New Mexico



"NAU FROM THE AIR"

1972 Lumberjacks



(51) Joe Hernandez, lb



(54) Rich Wilson, lb



(55) Terry Hoerner, c



(56) Charlie Gover, lb



(57) John Miller, c



(59) Phil Hildebrand, lb



(60) Tim Sanford, og



(62) John Cometh, dt



(63) Randy Bishop, dt



(64) Bob Donahue, og



(67) Gary Hitterman, ot



(68) Bob James, dt



(69) Alvin Moreira, og



(70) Steve Combs, dt



(71) Gilbert Ramos, ot



(72) Bob Rickert, og



(74) Jim Volpe, og



(75) George Kagele, dt



(76) Sean Gaffney, ot



(77) Bill Seabrook, de



(78) Bruce Ivor, dt



(79) Randy Jagger, og



(80) Jude Jenners, dt



(81) Rich Carlberg, wr



(82) Walter Mannon, wr



(83) Todd John, te



(84) Tom Ramsey, de



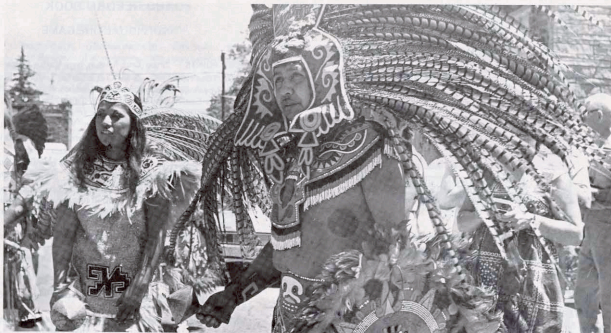
(85) Kino Flores, de



(87) Bob Chandler, de



(88) Kelly Schultz, te



FLAGSTAFF'S POW WOW --- Each July 4th weekend, Flagstaff is host to American Indian Tribes from virtually every corner of the west and mid-west. Also coming from Mexico, shown above, are the Aztecs.



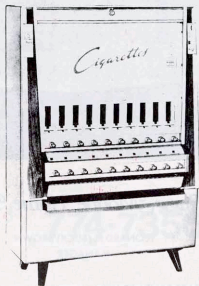
does the sun save you electricity?

The answer is "yes" and "no." In summer, the hotter it is, the more electricity it takes to cool your home. In winter, a warm sun gives an "extra" energy benefit. But, you can get full value from your electricity in **both** seasons if you have your heating and cooling equipment cleaned and serviced annually. Call us for advice on using electric energy "for all it's worth."

Arizona Public Service Company



FLAGSTAFF VENDING CO.



YOUR
FULL
LINE
VENDOR

774-3993



nagle printers

774-0474

105 W. ASPEN AVE.
FLAGSTAFF

- BROCHURES
- LETTERHEADS AND ENVELOPES
- WEDDING ANNOUNCEMENTS
- FORMS OF ALL KINDS
- LAYOUT AND DESIGN SERVICE
- ILLUSTRATORS

IMMEDIATE SERVICE—
NO WAITING

- RESUME'S
- FORMS
- LETTERS
- ALL SMALL COPYING JOBS



Quick
Copy
Service



Rugg Mobile Home, Inc.

LEONARD R. (BUCK) BROWN
MANAGER

3600 EAST SANTA FE AVE.
FLAGSTAFF, ARIZONA 86001

TELEPHONE
774-4175

THE RECORD BOOK

INDIVIDUAL ONE GAME

- MOST POINTS -- 22 by Cruz Salas vs New Mexico Western, 1956.
- MOST TOUCHDOWNS -- 3 by Cruz Salas vs New Mexico Western, 1956; 3 by Angel Salas vs LaVerne and Panhandle A & M, 1956; 3 by Jim Eis vs Eastern New Mexico, 1961. 3 by Chris Thornton, Omaha and Western Illinois, 1967. 3 by Roy Whalen, Eastern New Mexico University, 1968. 3 by Charlie Brown, Whitworth College, 1969.
- MOST CONVERSIONS -- 8 by Monte Harris vs New Mexico Western, 1964; 8 by Tony Lindsey vs Adams State, 1965.
- MOST FIELD GOALS -- 2 by Sonny Campbell vs Fresno State, 1969; Gary Galati, L. A. State, 1970 and Drake, Montana State, 1971.
- MOST TOUCHDOWN PASSES CAUGHT -- 3 by Dick Baserman vs San Fernando Valley, 1971. 3 by Don Brackin vs Westminster, 1956. 3 by Bob Gary vs Long Beach, 1968. 3 by Charlie Brown vs Whitworth College, 1969.
- MOST TOUCHDOWN PASSES THROWN -- 4 by Ted James vs Central Missouri, 1966. 4 by Mike Olson vs Long Beach State, 1968; 4 by Mike Olson vs N. Illinois, 1968; 4 by Bob Stewart vs Whitworth and Eastern New Mexico, 1969.
- MOST PASSES CAUGHT -- 12 by Charlie Brown vs Eastern New Mexico, 10 by Dustan Everman vs New Mexico Western 1960. 10 by Bob Grey vs N. Illinois, 1968.
- MOST PASSES THROWN -- 45 by Mike Olson vs Montana State, 1968.
- MOST PASSES COMPLETED -- 23 by Bob Stewart vs Eastern New Mexico, 1969.
- MOST YARDS GAINED PASSING -- 368 by Bob Stewart vs Weber State, 1969.
- MOST YARDS GAINED RECEIVING -- 245 by Charlie Brown vs Whitworth, 1969.
- MOST YARDS GAINED RUSHING -- 316 by Chris Thornton vs Western Illinois, 1967.
- MOST TOTAL YARDS GAINED -- 346 by Bob Stewart vs Weber, 1969.
- LONGEST PASS-RUN PLAY -- 86 yards, Jim Beckenhauer to Bob Brown vs Montana, 1969.
- LONGEST RUN FROM SCRIMMAGE -- 86 yards by Jim Sims vs New Mexico Western, 1964. 90 yards by Gus O'Conner vs Winslow, 1919.
- LONGEST KICKOFF RETURN -- 98 yards by Angel Salas vs LaVerne, 1956.
- LONGEST PUNT RETURN -- 90 yards by Jim Fuller vs West Texas State, 1966.
- LONGEST INTERCEPTED PASS RETURN -- 95 yards by Ron Cote vs Long Beach State, 1956.
- LONGEST RUN WITH BLOCKED FIELD GOAL -- 70 yards by Rudy Cabrera vs New Mexico Western, 1958.
- LONGEST RUN WITH INTERCEPTED PITCHOUT -- 85 yards by Louis Reyna vs Cal Poly (Pomona), 1957.
- LONGEST RUN WITH RECOVERED FUMBLE -- 88 yards by Jim Oman vs New Mexico Highlands, 1963.
- LONGEST FIELD GOAL -- 50 yards by Gary Galati vs Boise State, 1971; 46 yards by Monte Harris vs Adams State, 1964. (Harold Poe, 42 yard drop kick vs ASU, 1924.)
- LONGEST PUNT -- 79 yards by Russ Tillman vs Weber, 1968.
- HIGHEST PUNT RETURN AVERAGE (more than one return) -- 42.0 yards by Bill Tucker vs Chico State, 1959.
- HIGHEST PUNTING AVERAGE (more than one punt) -- 54.8 yards by Russ Tillman vs Hiram Scott, 1968.
- HIGHEST KICKOFF RETURN AVERAGE (more than one return) -- 53.5 yards by Sim Stokes vs Long Beach State, 1966.
- MOST PASSES INTERCEPTED -- 3 by Al Cirosta vs Long Beach State, 1966; 3 by Fritz Kreuzer vs Adams State, 1965.

BIG SKY RECORDS

INDIVIDUAL ONE GAME

MOST POINTS -- Don Hass (MSU) 30 vs North Dakota, 1966; Ray MacDonald (I) 30 vs Montana, 1966; Henry Owens (W) 30 vs Portland State, 1965.

MOST TOUCHDOWNS -- Don Hass (MSU) 5 vs North Dakota, 1966; Ray MacDonald (I) 30 vs Montana, 1966; Henry Owens (W) 5 vs Portland State, 1965.

MOST CONVERSIONS, KICKING -- Jan Stenerud (MSU) 8 vs North Dakota, 1966; Joe Blockovich (W) 8 vs California State-LA, 1966; Mike Mayne (I) 8 vs University of Pacific, 1963.

MOST FIELD GOALS -- Eric Guthrie (BSU) 5 of 6 vs NAU, 1971. **NATIONAL RECORD.**

LONGEST FIELD GOAL -- Jan Stenerud (MSU) 59 yards vs Montana, 1965; Joe Petrone (ISU) 59 vs Portland State, 1968.

MOST PASSES CAUGHT -- Jerry Hendren (I) 17 vs Southern Mississippi, 1969.

MOST TD PASSES CAUGHT -- Ed Bell (ISU) 4 vs Parsons, 1969; Jerry Hendren (I) 4 vs Idaho State, 1969.

MOST RECEPTION YARDS -- Ed Bell (ISU) 261 yards vs Parsons, 1969.

LONGEST TD RECEPTION -- Dave MacGillivray (W) 96 yards vs Boise, 1969. **MOST CARRIES** -- Paul Schafer (MSU)

MOST CARRIES -- Paul Schafer (MSU) 58 vs Montana, 1968; Lee White (W) 44 vs Idaho, 1967.

MOST NET YARDS -- Don Hass (MSU) 296 yards vs Weber, 1967.

LONGEST SCORING RUN -- Ben Vaughn (MSU) 97 yards vs Fresno State, 1964.

BEST AVERAGE PER CARRY -- Henry Owens (W) 11.7 yards (12-140) vs NAU, 1967. Minimum of 10 carries.

MOST TD'S RUSHING -- Don Hass (MSU) 5 vs North Dakota, 1966; Ray MacDonald (I) vs Montana, 1966.

MOST PASSING ATTEMPTS -- Jerry Dunne (ISU) 59 vs Montana, 1969.

MOST COMPLETIONS -- Steve Olson (I) 33 vs Southern Mississippi, 1969.

MOST YARDS PASSING -- Paul Waite (W) 440 vs Idaho, 1968.

MOST TD PASSES -- Jerry Dunne (ISU) 6 vs Parsons, 1969; Steve Olson (I) 6 vs Weber, 1968; Paul Waite (W) 6 vs Idaho, 1968.

BEST COMPLETION PERCENTAGE -- Tim Jones (W) 17 of 19 (.895) vs Portland State, 1965. Minimum of 10 attempts.

MOST PASSES INTERCEPTED -- Steve Olson (I) 7 vs Washington, 1968; Bill Ingram (ISU) 5 vs Montana State, 1967.

LONGEST PASS COMPLETION -- Paul Waite (W) 96 yards vs Boise, 1968.

MOST TOTAL PLAYS -- Jerry Dunne (ISU) 78 vs Montana, 1969.

MOST TOTAL YARDS -- Jerry Dunn (ISU) 478 vs Montana, 1969.

MOST PUNTS -- Larry Kerychuk (ISU) 12 vs Tulsa, 1967; Dave Bennett (I) 12 vs Houston, 1968; Ron Davis (I) 12 vs Washington State both in 1968 and 1970.

LONGEST PUNT -- Steve Smith (W) 83-yards vs Colorado Western, 1967.

MOST PUNT YARDS -- Ron Davis (I) 500 vs University of Pacific, 1970.

BEST PUNT AVERAGE -- Pat Buono (ISU) 50.7 ave (7-356) vs Idaho, 1970. Minimum of 6 punts.

MOST PUNT RETURNS -- James Edwards (W) 7 vs Idaho, 1969; Jay Groepper (MSU) 7 vs West Texas State, 1968; Gary Popiel (MSU) 7 vs Portland State, 1967; Jim Tuss (MSU) 7 vs North Dakota State, 1965.

MOST RETURN YARDS, PUNTS -- Carlis Harris (ISU) 209 yards on 5 returns vs Idaho, 1970.

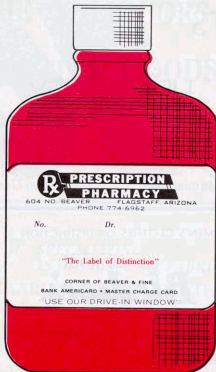
LONGEST PUNT RETURN FOR TD -- Bill Satterfield (ISU) 85 yards vs South Dakota State, 1967.

MOST KICKOFF RETURNS -- Ken Dotson (I) 11 vs Houston, 1967.

MOST KICKOFF RETURN YARDS -- Ken Dotson (I) 260 vs Houston, 1967.

LONGEST KICKOFF FOR TD -- Luther White (W) 98 yards vs California State University at Northridge, 1967.

MOST INTERCEPTIONS -- Karl Stein (M) 3 vs NAU in 1969 and 1970; Bill Satterfield (ISU) 3 vs Fresno State, 1968; James O'Neill (M) 3 vs Idaho, 1968, Bill Scott (I) 3 vs University of Pacific, 1964.



Town & Country
MOTOR HOTEL
RESTAURANT
COCKTAIL LOUNGE

MEMBER
FRIENDSHIP
INNS.
OF AMERICA

152 LUXURY ROOMS & SUITES

GROUP RATES AVAILABLE

COLOR TV AVAILABLE

774-7356

1008 EAST SANTA FE

PITTS

76
**University
 Union**

1601 S. Milton Road

774-2831

MEN'S CLOTHES OF DISTINCTION

Bledsoe's

STORE FOR MEN

774-6082

1 Aspen Street

DRESS RIGHT —

when you look your best, you do your best

In Arizona it's... El Rancho!

for: * Double Selected Gold Seal Meats!
 * Nationally Advertised Brands at Low, Low Prices!
 * Farm Fresh Produce-Delivered Fresh Daily!

Located throughout
 Arizona in....

- PHOENIX
- MESA
- TEMPE
- TUCSON
- FLAGSTAFF
- YUMA
- SUN CITY



Stop in the next time you
 are by and shop.....

OPEN 24 HOURS!

1760 E. SANTA FE (HWY. 66) FLAGSTAFF

1255 So. Milton
 Across From N.A.U
 South Entrance

TACOS
 BURRITOS
 CHILIBURGERS
 TOSTADAS
 ENCHIRITOS



774-8832

LUMBERJACK HISTORY

LUMBERJACK FOOTBALL RECORDS
 (Last 16 Years)

Year	Won	Lost	Tied	Coach
1971	5	5	0	Ed Pessley
1970	2	8	0	John Symank
1969	7	3	0	John Symank
1968	6	4	0	Andy MacDonald
1967	5	5	0	Andy MacDonald
1966	6	4	0	Andy MacDonald
1965	5	4	1	Andy MacDonald
1964	6	3	0	Max Spitsbury
1963	5	3	1	Max Spitsbury
1962	6	4	0	Max Spitsbury
1961	3	5	1	Max Spitsbury
1960*	6	3	2	Max Spitsbury
1959*	6	2	1	Max Spitsbury
1958*	11	1	0	Max Spitsbury
1957*	8	1	0	Max Spitsbury
1956**	8	2	0	Max Spitsbury
TOTALS	95	57	6	

* Frontier Champs

** Co-Champs

NAU PLAYERS
 IN PRO RANKS

ACTIVE

- MARK LOMAS (defensive end) New York Jets
- SONNY CAMPBELL (runningback) Detroit Lions
- RUSTY TILLMAN (linebacker) Washington Redskins
- DAVE CAHILL (defensive tackle) Washington Redskins
- CHARLIE BROWN (flanker) Detroit Lions
- RICK SAATHOFF (defensive tackle) Philadelphia Eagles
- MIKE HANNIGAN (offensive guard) Las Vegas Casinos
- DOUG BAAR (offensive tackle) Atlanta Falcons
- FLORENCE CHANDLER (fullback) Phoenix Blazers
- CALVIN WOOD (offensive guard) Phoenix Blazers
- *AL CLARK (defensive back) L. A. Rams
- RON MAYER (offensive guard) Phoenix Blazers
- STEVE SETKA (defensive end) Phoenix Blazers
- JOE JACKSON (runningback) Phoenix Blazers

* Played final year at Eastern Michigan

NO LONGER ACTIVE

- REX MIRICH (defensive tackle) New England Patriots
- BOB STEWART (quarterback) Philadelphia Eagles
- FRANK ARMSTRONG (quarterback) Chicago Bears
- CECIL "BRUTE" MULLENEAUX (blocking back) N. Y. Giants
- ERNE HANSEN (center) San Francisco 49ers
- MIKE MERCER (placekicker) San Diego Chargers
- BILL SHORTY (linebacker) Houston Oilers
- ED DULEY (defensive tackle) Houston Oilers
- STEVE HOLMES (defensive tackle) Houston Oilers
- SIM STOKES (flanker) Dallas Cowboys
- STEVE MAIER (flanker) Dallas Cowboys
- RICH O'HARA (flanker) Baltimore Colts
- DICK RIES (linebacker) San Diego Chargers
- DALTON KIMBLE (flanker) Edmonton Eskimos
- GEORGE HERMAN (fullback) Philadelphia Eagles
- LACY COLTER (fullback) St. Louis Cardinals
- BOB BROWN (flanker) San Diego Chargers
- HOSIE MADDOX (offensive tackle) L. A. Dons
- ED KELLEY (defensive tackle) Jersey City Reds
- BUD WIEDOFF (defensive end) Jersey City Reds
- OWEN DEJANOVICH (defensive tackle) Washington Redskins

NAU ALL-AMERICAS
(40 IN LAST 6 YEARS)

FOOTBALL

- 1971: John Nuttal (offensive guard), second team (AP); Mike "Bo" Boettcher (linebacker) and Rufus Mullen (cornerback) both honorable mention (AP).
- 1969: Charlie Brown (flanker) and Tom Anderson (defensive end) both third team (AP); Bob Stewart (quarterback) and Mark Lomas (defensive end) both honorable mention (AP).
- 1968: Larry Small (offensive guard), first team (AP); Bud Wiedoff (defensive end), second team (AP); Ed Duley (defensive tackle), honorable mention (AP).
- 1967: Bill Hanna (defensive end), first team (AP); Bud Wiedoff (defensive end) and Rich O'Hara (wide receiver) both honorable mention (AP).
- 1966: Dick Ries (linebacker), first team (AP); and Sim Stokes (wide receiver), honorable mention (AP).

BASKETBALL

- 1971: Walt Mannon (guard) third team AP, 2nd team All Big Sky.
- 1970: Don Rather (guard), honorable mention (NAIA); Mike Williams, (forward) honorable mention (AP).
- 1969: George Winters (forward), and Jim Plump (forward) both honorable mention (AP).
- 1968: Jim Plump (forward), honorable mention (AP).
- 1967: Jim Plump (forward), honorable mention (AP).

BASEBALL

- 1971: Tim Rajsich (shortstop) honorable mention Academic All-America, first team Big Sky. Bob Huddleston (centerfield) 2nd team District 7 NCAA.
- 1970: Vic Acuna (outfielder) and Tim Rajsich (shortstop) both honorable mention (NAIA). Acuna and Lonny Miller (pitcher) first team NCAA District 7 college division.
- 1969: Mark Brewster (outfielder) second team (NAIA) and Dan Roberson (first base) honorable mention (NAIA).
- 1968: Mark Brewster (outfielder) honorable mention (NAIA)

WRESTLING

- 1970: Mickey Carroll, (167 pound) first team (NAIA). Carroll and Gary Bennett (126) first year, All District 7 NAIA.
- 1969: Mickey Carroll, (167-pound)-first team (NAIA) national champ.

OUT DOOR TRACK

- 1970: Richard Sliney (6-mile) second team (NAIA) and Richard Selby (mile run) second team (NAIA).
- 1968: Nick Martinez (high jump) first team (NAIA) national high jump champion (6-10).

CROSS COUNTRY

- 1971: Richard Sliney, first team NCAA, placed 6th in University Division.
- 1970: Richard Sliney, first team, NCAA university division. Placed 12th.
- 1969: Dave Tocheri and Richard Sliney, first team (NAIA).

INDOOR TRACK

- 1971: Richard Sliney, first team NCAA, placed 3rd in University Division two-mile run.
- 1970: Paul Wagner (800-run) second team (NAIA)

SKIING

- 1970: Dag Ostvold (All-Round) second team (NCAA) second in ski meister competition at national meet.

THE Y LIQUORS
&
SPORTING GOODS

Jct. Hiway 66 & 89 West
(Next To Preston Chevron Service)

Sundries Picnic Supplies Kegs Film Ice
Hunting-Fishing Licenses

Open 8AM - 1AM Weekends Phone 774-8241



SPECIALIZING
IN DOUBLE KNIT FABRICS

ODEGAARD'S SEWING CENTER

AUTHORIZED SINGER DEALER

SALES - SERVICE - RENTALS
SERVICE & REPAIRS ALL MAKES

108 N. SAN FRANCISCO 774-2331
HARVEY and JUNE ODEGAARD'S

for the best in sound . . . see the
complete Magnavox custom stereo
component systems at

123 West Birch
LEAMON'S 774-4541

MAGNAVOX HOME ENTERTAINMENT CENTER

Frigidaire - Corning - Magic Chef - Thermador
we maintain our own factory trained service
departments for appliances and home electronics.

Moore Drug Co.

Rexall

Serving Flagstaff Since 1880

DOWNTOWN FLAGSTAFF



MONUMENT VALLEY --- In the heart of the Navajo Nation is beautiful Monument Valley, some 150 miles north of the NAU campus. Monument Valley's tall spires attracts many visitors.



Southwest Forest Industries

NORTHERN ARIZONA DIVISION

Lazy Lou's



774-1321

"EAT MORE FOR LESS"

Next to Mt. Elden Drive-In

LAZY LOU'S

FISH N' CHIPS

- Fish
 - Shrimp
 - Lobster
- ($\frac{1}{4}$ lb - \$2.95)
($\frac{1}{2}$ lb - \$4.95)

ENERGY
FOR THE
WEST

EL PASO
NATURAL
GAS
COMPANY



METEOR CRATER --- Some 22,000 years ago, a fiery ball of fire --- a meteor --- fell from outer space, creating a depression 570 feet deep and 4,000 feet across. This spectacle is open daily until sundown, 40 miles east of NAU on I-40.



SUTCLIFF FLORAL & GIFTS

15 EAST ASPEN AVENUE, FLAGSTAFF, ARIZONA 86001
PHONE: 774-2541



FOOD AND GROG

89A SOUTH HIGHWAY
NEAR NAU CAMPUS

TENOCHTITLAN

RESTAURANT

OPEN 4 PM DAILY

MEXICAN FOOD - STEAKS
COCKTAILS - MARGARITAS



2229 EAST SPRUCE

Across From Fire Station In East Flagstaff

774-0273

ANNIVERSARIES
PARTIES

Zenith introduces the complete color TV.

Complete with a new
Super Chromacolor picture
tube, even brighter and
sharper than famous
Chromacolor.

Complete with
a new 100%
solid-state chassis.

Complete with
one-button color tuning.

Complete with
one of color TV's
strongest warranties.



Model shown, the Avanté J,
D4760X. Also available in a
wide range of fine-furniture styles.
Simulated TV Picture.

ZENITH
SUPERCHROMACOLOR®

At Zenith, the quality goes in before the name goes on.