

# Northern Arizona University

FLAGSTAFF, ARIZONA 86001



Northern Arizona University was established in 1899 with a total of 23 students, passing through various growth phases over the years. Total enrollment is expected to reach over 9,000 this fall.

The university, fully accredited offers a broad, liberal arts education through its Colleges of Arts and Science, Education, Business Administration, Creative Arts, Engineering, its Schools of Forestry, and Applied Science and Technology, its College of Scientific and Humanistic Studies, and its Graduate College.

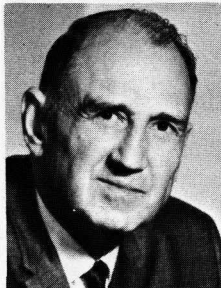
Located near the center of Flagstaff on Northern Arizona's 6,800-foot-high Coconino Plateau, the 677-acre, tree-shaded campus is noted for its green beauty. It sprawls in the shadow of the 12,800-foot San Francisco Peaks and within the Coconino National Forest, the largest stand of majestic Ponderosa pine in the world.

The man who has guided Northern Arizona University during the past 14 years—a period by far its greatest growth—is Dr. J. Lawrence Walkup. The dynamic administrator has been associated with NAU for 23 years.

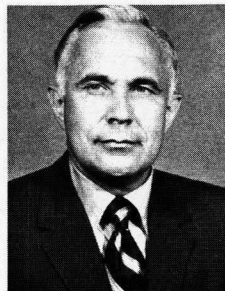
During the past decade Northern Arizona has experienced phenomenal growth in enrollment and in importance to the educational system of Arizona. And, with that growth the concept of maintaining a close relationship between faculty and student (a personal university) has become more and more difficult to maintain.

Anticipating the growth that was to come, President Walkup and a committee of faculty members and administrative aides initiated the "Academic Center" concept to the university's particular need of maintaining that "personal feeling."

Last year the first phase of the Academic Center became a reality. The new 90-acre center on south campus, approximately one-quarter of a mile from the present campus, is made up of eight buildings constructed at a cost of more than \$10 million. A ninth building is now under construction.



DR. J. LAWRENCE WALKUP  
(Central Missouri State, 1936)  
President since 1957



DR. NORMAN B. JOHANSEN  
(Northern Iowa, 1948)  
Athletic Director



DR. LYLE MULLENS  
(Nebraska State, 1940)  
Faculty Representative

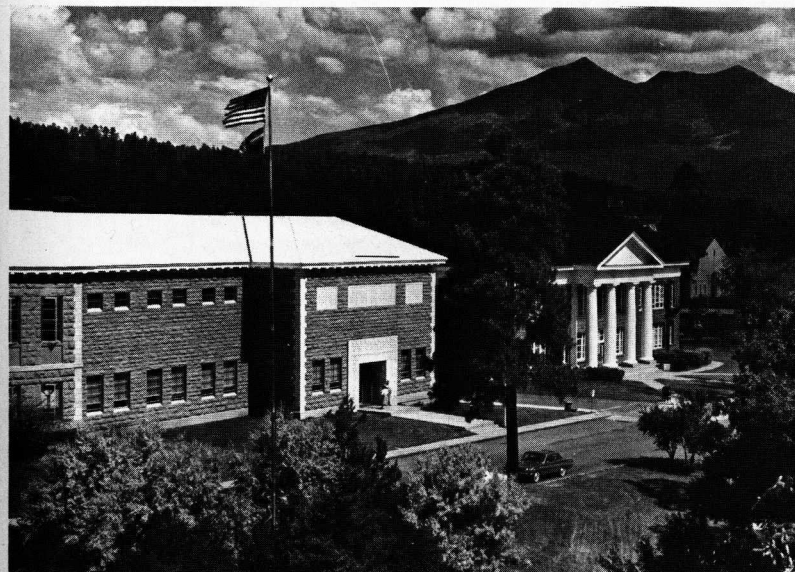
## NORTHERN ARIZONA Athletic Staff Telephone Directory

	Home*	Office*
DR. NORMAN B. JOHANSEN, Athletic Director . . . . .	779-1347	523-3422
NORMAN R. BORG, Sports Information Director . . . . .	774-9434	523-2282
JOHN H. ALLEN, Ticket Manager . . . . .	774-7732	523-3422
ED PEASLEY, Head Football Coach . . . . .	774-9413	523-2441
DON ANDERSON, Assistant Football Coach . . . . .	774-8117	523-2441
AL WORLEY, Assistant Football Coach . . . . .		523-2441
SCOTT SCHUHMAN, Assistant Football Coach . . . . .	779-1479	523-2441
KEN SAWIN, Assistant Football Coach . . . . .	774-9606	523-2441
HERB GREGG, Head Basketball Coach,		
Head Golf Coach . . . . .	774-6877	523-4123
KEN DOUGHTY, Assistant Basketball Coach . . . . .	774-2914	523-2541
LEO HABERLACK, Head Track Coach . . . . .	774-2378	523-2541
AL FLITCRAFT, Head Baseball Coach . . . . .	774-4708	523-2541
MAURICE JOHNSON, Head Wrestling Coach . . . . .	774-0713	523-2541
DR. JOHN PEDERSON, Head Ski Coach . . . . .	774-3724	523-4123
MICHAEL NESBITT, Head Trainer . . . . .	779-1749	523-3422
JACK MYERS, Equipment Manager . . . . .	774-4333	523-3244

or 523-4151

\* Area code for Flagstaff is 602.

## THE LUMBERJACK CAMPUS



BUSY PLACES — Administration Building and Journalism Building are sites of many important happenings on the NAU campus.