

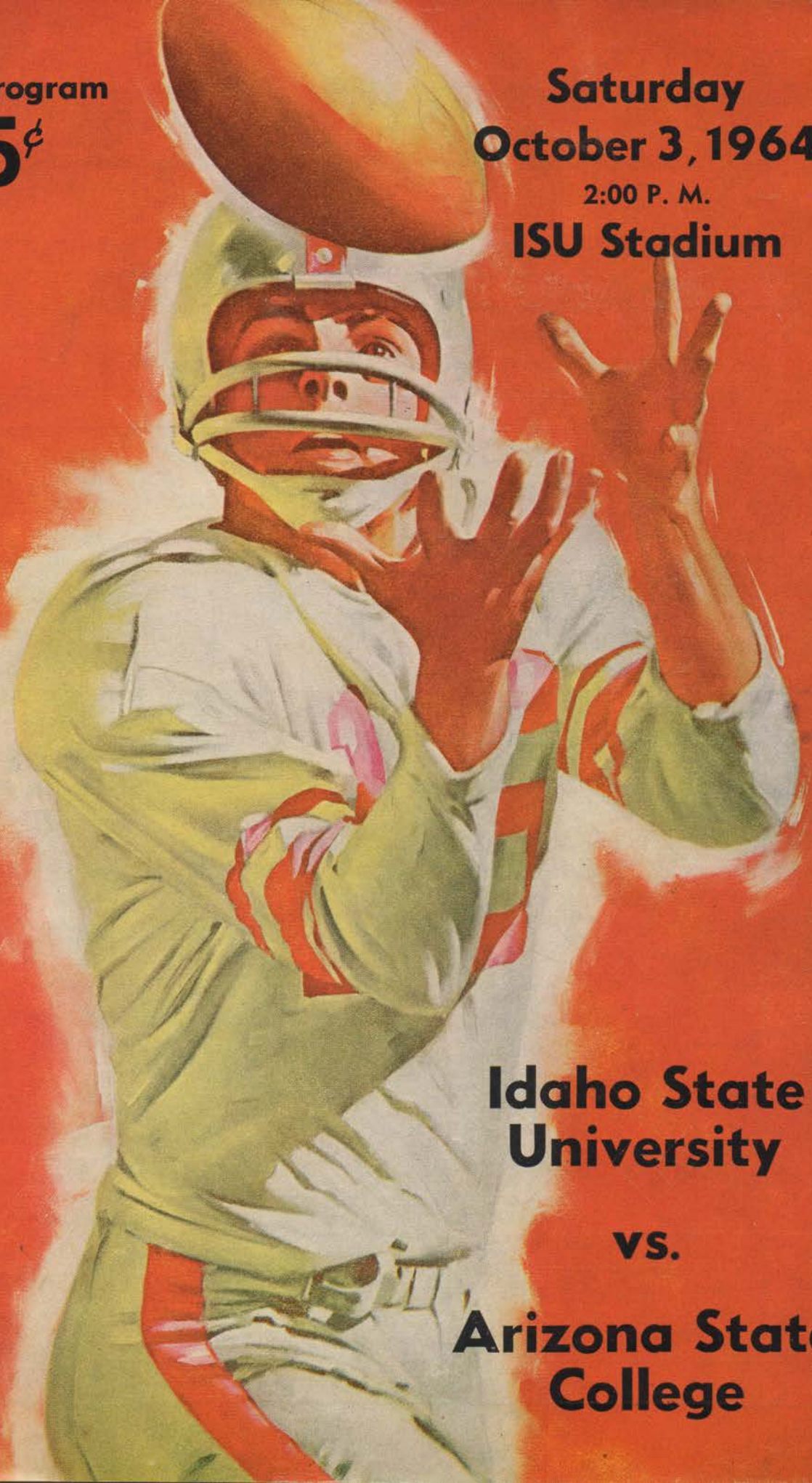
Official Program

25¢

Saturday  
October 3, 1964

2:00 P. M.

ISU Stadium



Idaho State  
University

vs.

Arizona State  
College

# 1964

## *Official Football Program*

### of

# IDAHO STATE UNIVERSITY

## Games Played At

### Idaho State University Stadium, Pocatello, Idaho

Volume II, No. 3

October 3, 1964

Published by the Athletic Department of  
Idaho State University

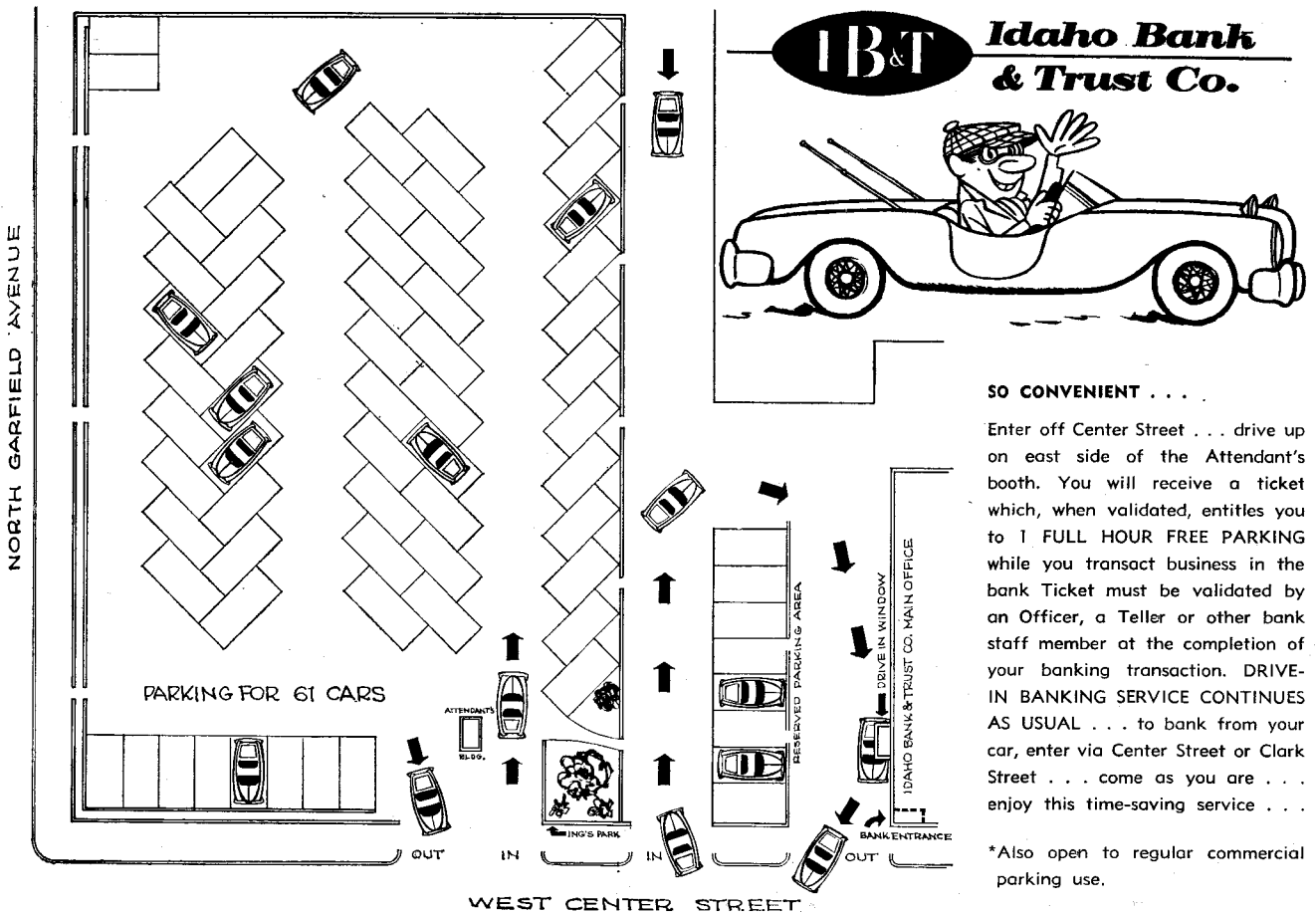
JOE RICHMOND.....Sports Information Director

LLOYD FURNISS.....Staff Photographer

For advertising rates, other information write or telephone Athletic Business Office, Idaho State University, Pocatello, Idaho, 83201. Phone 233-2160, Ext. 345.



## NOW . . . PLENTY OF FREE PARKING FOR CUSTOMERS



### SO CONVENIENT . . .

Enter off Center Street . . . drive up on east side of the Attendant's booth. You will receive a ticket which, when validated, entitles you to 1 FULL HOUR FREE PARKING while you transact business in the bank. Ticket must be validated by an Officer, a Teller or other bank staff member at the completion of your banking transaction. DRIVE-IN BANKING SERVICE CONTINUES AS USUAL . . . to bank from your car, enter via Center Street or Clark Street . . . come as you are . . . enjoy this time-saving service . . .

\*Also open to regular commercial parking use.

# About Today's Game . . .

Starting their second home game in ISU's five home game season, the Bengals meet the Arizona State College Lumberjacks in the Spud Bowl today.

With wins over Omaha University and College of Idaho, the I-State team is looking forward to a repeat of last year's scoring against ASC when the Bengals won 13-2.

In past years Arizona has lost five games to ISU, while only winning two. The Flagstaff team had five wins, three losses and one tie, compared to the Bengals' five wins, three losses and no tie score in 1963. One of the two games ASC has won over ISU includes the Homecoming clash two years ago when the final score read Arizona—35, Idaho—26.

ISU can depend upon the swift and powerful running ability of veteran quarterback Billy Shaw, plus the fine playing of halfback Bill Harvey, George Douglas, and Cliff Chilton. Arizona looks to quarterback Larry Welsh to provide most of its yardage gaining ability, assisted by halfbacks Jim Russo and David Estrada, and fullback George Herman.

In the season opener, Welsh completed four out of five passes for a total of 100 yards and two TD's.

Running out of a slot-T, compared with ISU's wing-T formation, Arizona has the dual ability to pass or run. Welsh is classed as a "pin-point passer" and has able receivers in Bill Shorty and Fritz Kruezer.

Arizona has a nucleus of 24 returning lettermen, but will have to depend upon junior college transfers and sophomores to fill in the gaps in the line and backfield.



**Bannock**  
WESTERN INTERNATIONAL HOTELS

**HOTEL  
and  
MOTOR INN**

"SOCIAL CENTER FOR EASTERN IDAHO"

For Leisurely Sunday Dining  
It's The

**SUNDAY FARM FAIR**

2 P. M. to 8 P. M.

Sunday Afternoons and Evenings

**COFFEE SHOP OPEN**

**From 6:00 A. M. to 11:00 P. M.**

The  
**GOLDEN PALACE**

**SPECIALTIES**

**PLENTY OF PARKING  
AVAILABLE**





Girl, team, fun, friends - all go better refreshed. Coca-Cola, never too

ENJOY

THE

**BENGAL STARTERS**

**ARIZONA STARTERS**

No.	Name	Pos.	Name	No.
87	Carl Humphrey (228)	LE	Fritz Kruezer (185)	84
74	Tom Williams (246)	LT	Erv Rodgers (197)	70
63	Jim Anaya (205)	LG	Charles Harvell (200)	61
51	Bud Johnson (190)	C	Gary Campbell (205)	52
60	Nick Thomasson (212)	RG	Emie Dora (205)	62
77	Gene Keliikuli (240)	RT	Jim Kelley (215)	83
86	Rod Hohnhorst (234)	RE	Bill Shorty (210)	85
11	Bill Shaw (174)	QB	Larry Welsh (170)	12
23	Bill Harvey (185)	LH	David Estrada (205)	28
21	George Douglas (175)	RH	Jim Russo (188)	44
26	Cliff Chilton (186)	FB	George Herman (215)	38

Average Weight Line—222-Per-Man  
 Average Weight Backs—180 Per Man  
 Team Average—207-Per Man

Average Weight Line—207-Per Man  
 Average Weight Backs—187-Per Man  
 Team Average—207-Per Man

**LET'S GO BOWLING!**

**REFEREES' SIGNALS**





sweet, gives that special zing... refreshes best.

# GAME

## TODAY'S OFFICIALS

(Assigned by Big Sky Athletic Conference)

Referee.....	John Presley
Umpire.....	Herb Carlson
Field Judge.....	Don Andrews
Head Linesman.....	Rudy Ashenbrenner
Box.....	Vernon Ravesten
Scoreboard.....	Arthur P. Oliver
Timekeeper.....	Mike MacButch
Public Address.....	Gary Smith

## Save On Season Tickets

### Football: (5 Home Games)

Season Reserved Seats (40-50 yd. line.....)	\$12.00
Individual Game Reserved.....	3.00
Fresno State—Homecoming.....	3.50

**Note:** A season ticket saves you 70 cents per game, or a total of \$3.50 for all 5 games.

### Basketball: (11 Home Games)

Season Reserved Seats.....	\$19.50
Individual Game Reserved.....	2.00
U. of Idaho Game (March 5).....	2.50

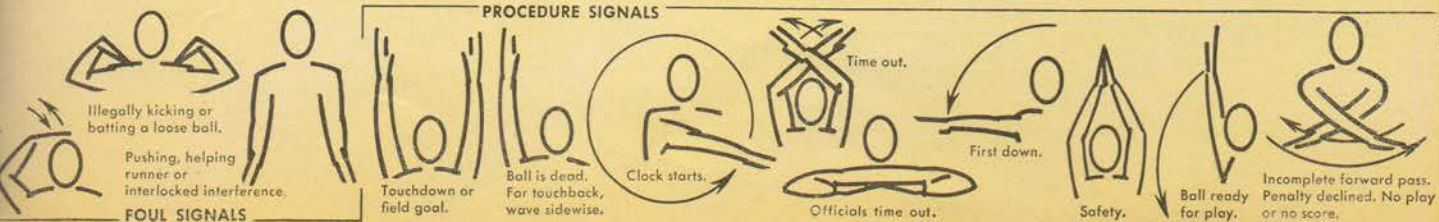
**Note:** A season ticket gives you a \$3.00 discount off the regular value, and assures you of the best seats in the gymnasium for all home games.

For tickets or information, write or telephone:

**Joe Richmond**  
Athletic Business Office, ISU Gym,  
Pocatello, Idaho, Phone 233-2160, Ext 345, 349

things go  
better  
with  
**Coke**

TRADE-MARK ©



# Idaho State University Roster

No.	Name	Pos.	Ht.	Wt.	Age	Yr.	Exp.	Hometown
10	Don Neves.....	Quarterback	5-10	170	20	Jr.	JC	Kaneohe, Hawaii
11	Billy Shaw.....	Quarterback	6- 1	174	21	Sr.	2	Nampa
12	Tom Lundy.....	Quarterback	5-10	180	20	So.	JC.	Sunnyvale, Calif.
13	Lyall Hartley.....	Quarterback	6- 1	180	21	Jr.	Sq.	Boise
14	Jim Lovat.....	Quarterback	6- 0	183	21	Jr.	Sq.	Midvale Utah
20	Dennis Shockley.....	Halfback	5- 9	157	21	Sr.	Sq.	Eden
21	George Douglas.....	Halfback	5- 9	175	24	Jr.	1	Memphis Tenn.
22	Al Jacobson.....	Halfback	5- 9	170	21	Jr.	1	Sandpoint
23	Bill Harvey.....	Halfback	5-10	185	22	Sr.	1	Houston, Tex
24	Paul McCormick.....	Halfback	5- 9	180	21	Jr.	JC	Mt. View, Calif
26	Cliff Chilton.....	Halfback	6- 0	186	26	Sr.	1	Honolulu, Hawaii
30	Rich Urresti.....	Halfback	5- 9	184	21	Jr.	JC	Boise
31	Jim Roberts.....	Fullback	5- 9	185	19	So.	Fr.	Pocatello
32	Russ Radford.....	Fullback	6- 1	185	19	So.	Fr.	Idaho Falls
34	Otha Roberts.....	Fullback	6- 0	195	20	So.	Fr.	Lovelock, Nev.
40	Randy Dodd.....	Halfback	5-10	175	19	So.	Fr.	Rigby
41	Steve Kuharski.....	Halfback	6- 0	175	10	So.	Fr.	Idaho Falls
42	Bud Hare.....	Halfback	5- 9	185	21	Sr.	Sq.	Spokane, Wash.
43	Jim Mahar.....	Halfback	6- 0	195	21	Jr.	Fr.	Rochester, N. Y.
51	Bud Johnson.....	Center	6- 0	190	21	Sr.	1	Portland, Ore.
52	Bob O'Mera.....	Center	6- 1	198	24	Sr.	1	Osburn
53	Bill Pederson.....	Center	6- 2	190	21	Sr.	1	Bend, Ore.
54	Bob Upshaw.....	Center	6- 1	235	19	So.	Fr.	Gary, Ind.
60	Nick Thomasson.....	Guard	5-10	212	20	Jr.	1	Elon College, N. C.
61	Tom Holzer.....	Guard	5-11	200	21	Jr.	Sq.	Coeur d'Alene
62	Phil Perry.....	Guard	6- 1	210	20	Jr.	JC	Campbell, Calif.
63	Jim Anaya.....	Guard	6- 0	205	23	Sr.	1	Santa Clara, Calif.
65	John Cali.....	Guard	5-11	215	21	Sr.	1	San Jose, Calif.
66	Rod Rutherford.....	Guard	6- 1	210	20	Jr.	Sq.	Buhl
67	Bill Perry.....	Guard	6- 0	230	21	Sr.	1	Spokane, Wash.
70	Bruce Malson.....	Tackle	6- 2	205	19	So.	JC	White Plains, N. Y.
71	Bob Satterwhite.....	Tackle	6- 2	220	19	So.	Fr.	Twin Falls
72	John Reschert.....	Tackle	6- 2	226	22	Sr.	2	Walnut Cr., Calif.
73	George Risher.....	Tackle	6- 3	218	20	So.	Fr.	Chicago, Ill.
74	Tom Williams.....	Tackle	6- 1	246	26	Sr.	1	Pittsburgh, Pa.
76	Roger Thomas.....	Tackle	6- 2	258	19	So.	Fr.	Kimberly
77	Eugene Keliikuli.....	Tackle	6- 1	240	22	Sr.	1	Waianae, Hawaii
80	Doug Rex.....	End	5-11	195	19	So.	Fr.	Kellogg
81	Gary Bertsch.....	End	6- 2	195	20	Jr.	1	Meridian
83	Gil Varjas.....	End	6- 2	190	20	Jr.	JC	Southington, Conn.
85	Ron Arnold.....	End	6- 2	215	20	Jr.	Sq.	Meridian
86	Rod Hohnhorst.....	End	6- 3	234	21	Sr.	2	Hazleton
87	Carl Humphrey.....	End	6- 3	228	22	Sr.	1	Fresno, Calif.

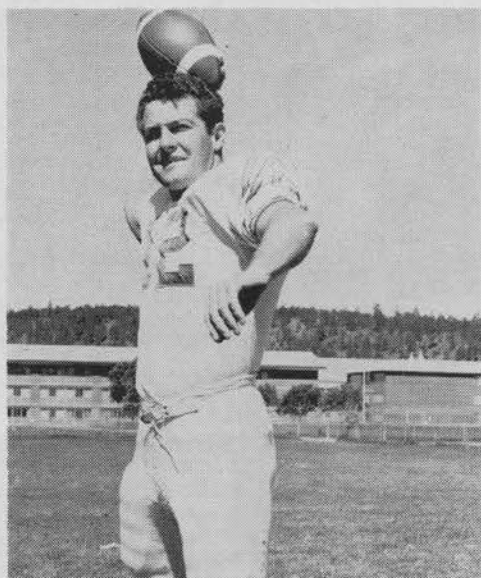
# Arizona State College Roster

No.	Name	Pos.	Ht.	Wt.	Age	Yr.	Exp.	Hometown
12	Larry Welsh	Quarterback	5- 8	170	23	Jr.	2	Lakewood, Calif.
16	Tony Lindsey	Quarterback	5-11	190	19	So.	1	Marana, Arizona
20	Charles Lee	Halfback	5- 8	170	19	So.	1	Liberty, Mo.
40	Charles Stevenson	Halfback	5- 7	182	20	So.	Tr.	Sandusky, Ohio
28	David Estrada	Halfback	6- 1	205	21	Sr.	3	Lordsburg, N. M.
30	Gary Barnes	Fullback	5-10	118	22	Fr.	USMC	Kansas City, Mo
34	Monte Harris	Fullback	6- 1	210	23	Sr.	3	Holbrook, Arizona
38	George Herman	Fullback	5-11	215	21	Jr.	1&JC	Pinetop, Arizona
42	Jim Sims	Halfback	5-10	180	21	Sr.	3	Tucson, Arizona
44	Jim Russo	Halfback	5- 9	188	21	Sr.	1&JC	Blue Island, Ill.
46	Craig Ballew	Halfback	5-10	180	20	So.	1	Henderson, Nev.
50	Harry Hartsell	Guard and Center	6- 1	190	19	So.	1	Las Vegas, Nev.
52	Gary Campbell	Center	6- 2	205	21	Jr.	2	Azusa, Calif.
56	Bob Krizan	Center	6- 2	220	21	Jr.	2	Industry, Pa.
60	Dave Harris	Guard	6- 2	190	19	So.	1	San Jose, Calif.
61	Charles Harvell	Guard	5-11	200	21	Sr.	3	Lordsburg, N. M.
62	Ernie Dora	Guard	6- 1	205	21	Sr.	3	Globe, Arizona
63	Dave Watson	Guard	6- 0	200	21	Fr.	0	Coolidge, Arizona
66	Bob Smith	Guard	6- 0	210	19	So.	1	Long Beach, Calif.
70	Erv Rodgers	Tackle	6- 3	197	20	Jr.	JC	San Luis Obispo, Calif.
71	Mike St. Louis	Tackle	6- 4	245	21	So.	1	Kansas City, Mo.
72	Dave Cahill	End and Tackle	6- 3	220	22	Sr.	2	Tempe, Arizona
73	Ken Garver	Tackle	6- 2	205	23	Jr.	JC	Victorville, Calif.
74	Jack James	Tackle	6- 4	225	22	Sr.	3	Coolidge, Arizona
77	Alan Shaver	Tackle	6- 1	285	19	So.	1	Wilcox, Arizona
80	Dale Know	End	6- 2	185	18	Fr.	0	Buckeye, Arizona
81	Larry Hannum	End	6- 3	217	21	Sr.	1&JC	Phoenix, Arizona
82	Bill Hanna	End	6- 3	205	18	Fr.		Independence, Mo.
83	Jim Kelley	Tackle and End	6- 4	215	19	So.	1	Carmel Valley, Calif.
84	Fritz Kruezer	End	6- 1	185	19	So.	1	Las Vegas, Nev.
85	Bill Shorty	End	6- 2	210	22	Jr.	2	Eloy, Arizona
86	Ed Lewis	End	6- 1	200	21	Jr.	2	Douglas, Arizona



# Larry Welsh

## Arizona Quarterback



Perhaps the greatest threat to the Bengals on the Axers' offensive squad is quarterback Larry Welsh, 5-8, 170-pound senior from Lakewood, Colo.

"Larry Welsh looks like a new man at quarterback," stated Lumberjack head coach Max Spilsbury concerning Welsh's improvement over last year. He certainly proved himself worthy of Spilsbury's praise during the Arizona-Weber clash. The fast-moving quarterback completed four out of five passes for a total of 100 yards and two touchdowns. He has developed into a pin-point passer this season in addition to his smart signal calling.

Welsh is a two year veteran and also proves useful on the Lumberjack defensive squad. Moving from the offensive quarterback position into the defensive half-back slot, Welsh is a fast-moving, hard-hitting safety man.

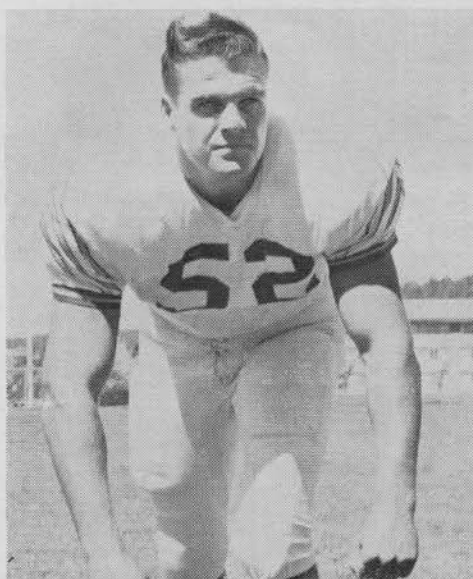
# Gary Campbell

## Arizona Center and Linebacker

The key to Lumberjack defenses this year lies in the hands of center Gary Campbell, a 6-2, 205-pound junior from Azusa, California.

Although a starting center and an important part of the Axers offensive lineup, Campbell really shows his ability on the defensive squad as a rough and ready linebacker. Coupled with guard Chuck Harvell, a 5-11, 200-pound senior from Lordsburg, Ariz., it looks as these two linebackers will be a tough wall for Bengal runners to break through.

The Lumberjacks are not only depending upon these two players to be the spark on defense, but also as starting offensive men.





# Arizona State College Facts

Location ..... Flagstaff  
 Enrollment ..... 3,950  
 Athletic Director ..... Herb Gregg  
 Head Football Coach ..... Max Spilsbury, (U. of Arizona, '50)  
 Assistant Coaches ..... Ken Gibler  
 Athletic Trainer ..... None  
 Sports Publicity ..... Norman R. Borg  
 Team Nickname ..... Lumberjacks, Axers  
 School Colors ..... Blue and Gold  
 Stadium and Capacity ..... Lumberjack Stadium, 4,000  
 Offensive System ..... Slot T  
 1963 Season Record ..... Won 5, Lost 3, Tied 1  
 All-time Record Against ISU ..... Won 2, Lost 5, Tied 0  
 Returning Lettermen ..... 15

## 1964 SCHEDULE

Sept. 19.....Weber College  
 Sept. 26.....Arlington St.  
 Oct. 3.....Idaho State U.  
 Oct. 10.....Colorado St.  
 Oct. 17.....Cal Poly  
 Oct. 24.....Western New Mexico  
 Oct. 31.....Adams State  
 Nov. 7.....Open  
 Nov. 14.....Eastern New Mexico  
 Nov. 21.....U of Santa Clark

## 1963 RESULTS

Arizona State	Opp.
6	Whittier College ..... 6
7	San Diego Marines ....40
2	Idaho State U. ....13
49	New Mexico Highlands .. 0
7	Montana State Col. ....28
52	Western New Mexico...14
41	Cal Poly .....14
14	Colo. Western ..... 7
15	Eastern New Mexico ... 6



For Group  
 Chartered Trips . . .

IDAHO, U. S. A., ANYWHERE

# FLY EDDE AIRLINES

53 East Fourth South

Salt Lake City, Utah

Phone 363-7725