

Arizona State College

LUMBERJACKS

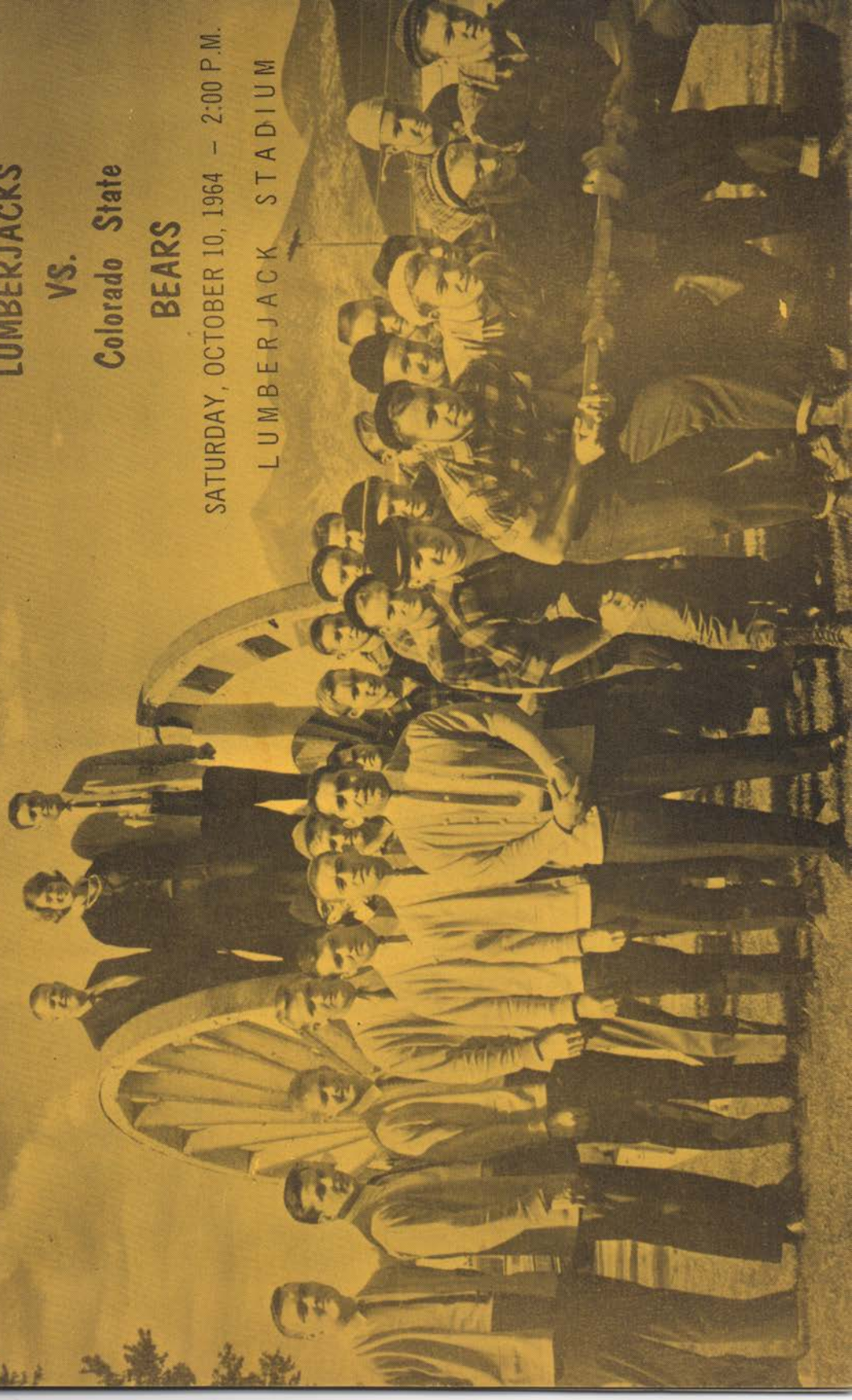
VS.

Colorado State

BEARS

SATURDAY, OCTOBER 10, 1964 - 2:00 P.M.

LUMBERJACK STADIUM



Homecoming King & Queen

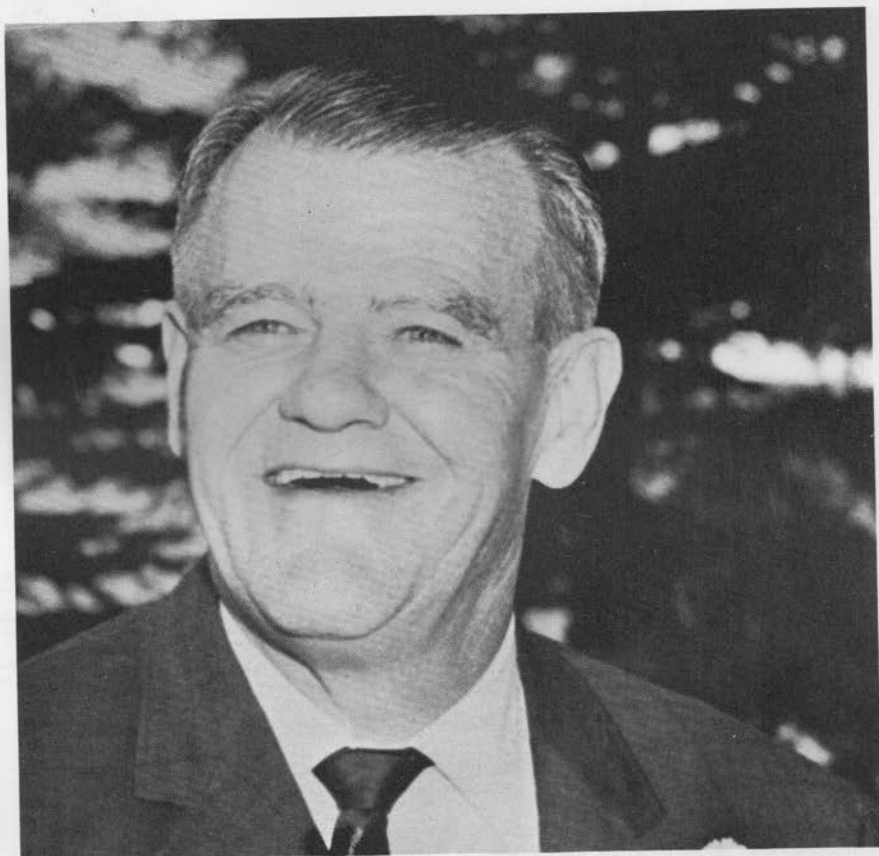


Arizona State College students selected David Estrada, Lordsburg, N.M., and Anita Bianchini, Phoenix, as their 1964 Homecoming King and Queen. Both are seniors.

King David is a star halfback on the Lumberjack football team and a three-year letterman. He is also a member of the ASC track team and a member of the Chain Gang. He is majoring in physical education.

Very active in campus affairs, Queen Anita is a member of Alpha Omicron Pi, national social sorority. She has served as president of the sorority. She has also been a member of both Spurs and Cardinal Key, sophomore and junior women's national service honoraries. She is an elementary education major.

Dedicatee



A great many of the students at ASC became acquainted with Dedicatee, Dr. Lewis J. McDonald, executive director of college relations, during their senior year in high school. For many years he has talked about ASC to high school seniors during his annual visitations to schools throughout the state.

His pleasant and friendly manner has made him a campus favorite of both students and faculty.

Dr. McDonald joined ASC in 1952 as director of field relations. He held this post until July, 1957, when he assumed the duties as administrator of the Page school system. He rejoined the staff at ASC in February, 1958, as director of college relations.

He is active in alumni affairs and serves the ASC Alumni Association as secretary-treasurer. Last year at Homecoming, he was the recipient of the first annual Alumni Service Award for outstanding service to both the association and ASC.

Homecoming Band Show

Eleven Arizona high school bands join the Arizona State College Marching Band, Drum Major Charles Quinlan and Majorette Jo Ann Tomkinson, in presenting this afternoon's pre-game show.

The ASC Band opens the program with a new and modern version of the traditional song "Timber" as the Chain Gang presents the axe.

While the ASC Band plays "Let Me" the 11 bands of over 800 musicians move onto the field forming the letters Show Time from goal line to goal line. Then all bands join together playing "Let Me Entertain You" before going into the next tune "Big Four March" featuring the Pom Pon girls from all the high schools. Next, the tune "Great Adventure" features the twirlers and drum majors, moving into the formation spelling "Presents", then closing on the National Anthem.

Visiting bands are from Buckeye Union; Carl Hayden High, Phoenix; Chandler High; Coronado High, Scottsdale; Cortez High, Phoenix; Flagstaff High; Gilbert High; Holbrook High; Scottsdale High; Snowflake High; and Winslow High School.

Saluting the Homecoming theme, "The Wonderful World of Entertainment", the Arizona State College Marching Band opens the halftime show with the classic opener, "There's No Business, Like Show Business" as a prelude to a trip through the world of entertainment. From this classic opening they move to the Symphonic Concert Hall playing selected themes from Rimsky-Korsakov's "Scheherezade", before going to the Broadway stage and the musical hit "Hello Dolly". They next visit the comedy playing the 1964 hit "The Pink Panther", and then salutes the 1964 Olympics in Tokyo, playing "March of Olympians". No show would be complete without mentioning the current stars of England, "The Beatles", and the ASC Band plays the arrangement of "I Wanna Hold Your Hand". They then move downfield to the tune "Sons of the Brave". The ASC Band reforms into a block formation and the letters ASC, moving up the field playing "Washington and Lee Swing", and closing the show with "Alma Mater".



LUMBERJACK CHEERLEADERS -- Leading Arizona State College rooters at athletic events this season, from left, are (kneeling) Pat Sturm, Las Vegas, Nev.; Trini Lopez, Yuma, head cheerleader; Marilyn Alleman, Las Vegas; (standing) Ardis Koerwitz, Las Vegas; Jerry DaDurka, Los Angeles, Calif.; Dave Klensin, Tucson; Larry Himes, Phoenix; and Terri O'Hanlon, Burbank, Calif.



POM PON GIRLS

ADDING PEP AND COLOR to the Lumberjack home football games are these eight attractive ASC coeds making up the Pom Pon Girls. Left, front to back, Laura Holmes, Phoenix; Joyce Goettl, Phoenix; JoAnn Price, Prescott, captain; and Sue Bowman, Safford. Right, front to back, Nina Heflin, Flagstaff; Betty Bostick, Douglas; Karen Pigg, Goodyear; and Janice Maddux, Phoenix.

Today's Game

The Lumberjacks take a 2-1, win-loss record into today's game against the Colorado State College Bears from Greeley, who have had tough luck so far this season with a 0-4, win-loss record.

Last Saturday at Pocatello, Idaho, the Lumberjacks had to overcome a 21-7 halftime deficit to defeat Idaho State University Bengals, 28-21. The Lumberjacks in the second half completely over-powered Idaho State, not permitting them to make a first down. Speed and lots of power was a big factor in the win.

The Bears had their fourth straight loss 20-7, at the hands of Western State of Gunnison, Colo. Their defense was strong against Western, but a miscue in the first half put them behind 7-0. They tied it up in the third period, but Western's speed and depth was the deciding factor as they out-finessed the Bears to win 20-7.

With three games behind them, the Lumberjacks are averaging 330 yards per game in total offense, holding their opponents to a 154-yard average. The Lumberjacks have a rushing average of 262.3 yards, while their opponents are averaging only 102.3 yards per game.

Fullback George Herman leads the Lumberjacks in rushing with a 76.0 three-game average and is top scorer with 18 points. Halfback David Estrada is right behind Herman with a rushing average of 72.6 yards. In the Idaho State game Estrada picked up 100 yards in 17 carries. Quarterback Larry Welsh leads the Lumberjacks in total offense, with a three-game average of 79.6 yards.

Homecoming fans should see the Lumberjacks go to the air quite a lot this afternoon, as Coach Spilsbury has been working all week to strengthen the Axer's passing offense. Favorite targets for Welsh will probably be sophomore end, Fritz Kruezer and junior end Bill Shorty. Herman and Estrada, along with Jim Sims will do the bulk of the rushing attack.

NEXT WEEK

Pomona, Calif., is the destination for the Arizona State College Lumberjacks next Saturday, Oct. 17. They will meet the California Polytechnic Broncos in a night game, starting at 8 p.m.

The Broncos have been having it tough so far this season, with a 0-2 win-loss record. In their last game, Sept. 28, they were blitzed by Long Beach State, 51-6.

The Lumberjacks are even-up with the Broncos, with a 3-3-2, win-loss-tie record. Last year the Lumberjacks beat Cal Poly 41-14.

Starting Offensive Lineups

LUMBERJACKS

	Pos.
84 Fritz Kruezer (185)	LE
74 Jack James (225)	LT
61 Charles Harvell (200)	LG
52 Gary Campbell (205)	C
73 Ken Garver (205)	RG
83 Jim Kelley (215)	RT
85 Bill Shorty (210)	RE
12 Larry Welsh (170)	QB
28 David Estrada (205) *	LH
42 Jim Sims (180)	RH
38 George Herman (215)	FB
Jack James*	

* Co-Captains

BEARS

62 Jerry Newbrey (185)
70 Sam Brunelli (210)
60 Jim Lamberson (215)
50 Del Steele (210)
66 Jim Wing (205)
77 Don Tomasini (215)
83 Mark LaGrone (205)
10 Ed Pittock (200)
23 Jerry Faulkenberg (175)
41 Ted Starostka (170)
40 Jerry Cullen (195)

LUMBERJACK COACHES – Max Spilsbury, Head Coach; Ken Gibling, Line Coach, Leo Haberlack, End Coach, Brad Lynn, Backfield Coach.
 Team Physician - Dr. M. G. Fronske
 Head Trainer - Levi Woods
 Assistant Trainer - Ron Britton
 Team Manger - Gary Kiepk
 Equipment Manager - Jack Myers

BEAR COACHES – Head Coach, William C. Heiss; Line Coach Robert Blasi; Backfield Coach, Warren Best; Trainer, Anthony Rossi

OFFICIALS - Referee, Emil Nasser, Winslow; Umpire, Glen Clark, Snowflake; Field Judge, George Poehner, Winslow; Head Linesman, Ed Ferguson, Winslow.

Southern Union Gas
Company

"Helping Build the

Great Southwest"

"OUR PRIVILEGE AND PLEDGE"

THE PRINT SHOP

FLAGSTAFF

TYPE and PHOTO OFFSET

P. O. Box 1578 — Phone PR 4-2652

Lumberjack Roster

No.	Name	Pos.	Ht.	Wt.	Age	Class	Exp.	Home Town
12	LARRY WELSH	QB	5-8	170	23	Jr.	2	Lakewood, Colo.
16	TONY LINDSEY	QB	5-11	190	19	Soph.	1	Marana, Arizona
20	CHARLES LEE	HB	5-8	170	19	Soph.	1	Liberty, Mo.
28	DAVID ESTRADA	HB	6-1	205	21	Sr.	3	Lordsburg, N.M.
30	GARY BARNES	FB	5-10	188	22	Fr.	USMC	Kansas City, Mo.
34	MONTE HARRIS	FB	6-1	210	23	Sr.	3	Holbrook, Arizona
38	GEORGE HERMAN	FB	5-11	215	21	Jr.	1&JC	Pinetop, Arizona
40	CHARLES STEVENSON	HB	5-7	182	20	Soph.	Tr.	Sandusky, Ohio
42	JIM SIMS	HB	5-10	180	21	Sr.	3	Tucson, Arizona
44	JIM RUSSO	HB	5-9	188	21	Sr.	1&JC	Blue Island, Ill.
46	CRAIG BALLEW	HB	5-10	180	20	Soph	1	Henderson, Nev.
50	HARRY HARTSELL	G&C	6-1	190	19	Soph	1	Las Vegas, Nev.
52	GARY CAMPBELL	C	6-2	205	21	Jr.	2	Azusa, Calif.
56	BOB KRIZAN	C	6-2	220	21	Jr.	2	Industry, Pa.
60	DAVE HARRIS	G	6-2	190	19	Soph	1	San Jose, Calif.
61	CHARLES HARVELL	G	5-11	200	21	Sr.	3	Lordsburg, N.M.
62	ERNIE DORA	G	6-1	205	21	Sr.	3	Globe, Arizona
63	DAVE WATSON	G	6-0	200	21	Fr.	0	Coolidge, Arizona
66	BOB SMITH	G	6-0	210	19	Soph.	1	Long Beach, Calif
70	ERV RODGERS	T	6-3	197	20	Jr.	JC	San Luis Obispo, Cali.
71	MIKE ST. LOUIS	T	6-4	245	21	Soph.	1	Kansas City, Mo.
72	DAVE CAHILL	E&T	6-3	220	22	Sr.	2	Tempe, Arizona
73	KEN GARVER	T	6-2	205	23	Jr.	JC	Victorville, Calif.
74	JACK JAMES	T	6-4	225	22	Sr.	3	Coolidge, Arizona
77	ALAN SHAVER	T	6-1	285	19	Soph	1	Willcox, Arizona
80	DALE KONOW	E	6-2	185	18	Fr.	0	Buckeye, Arizona
81	LARRY HANNUM	E	6-3	217	21	Sr.	1&JC	Phoenix, Arizona
82	BILL HANNA	E	6-3	205	18	Fr.	0	Independence, Mo.
83	JIM KELLEY	T&E	6-4	215	19	Soph	1	Carmel Valley, Calif.
84	FRITZ KRUEZER	E	6-1	185	19	Soph	1	Las Vegas, Nev.
85	BILL SHORTY	E	6-2	210	22	Jr.	2	Eloy, Arizona
86	ED LEWIS	E	6-1	200	21	Jr.	2	Douglas, Arizona

A. M. F. AUTOMATIC
PINSPOTTERS

SNACK
COUNTER

P. Sky-Hi Lanes

FLAGSTAFF, ARIZONA

"LEN" & "IDA" SONKA

Student Rates

- Friendly Family Bowling Center

1/2 BLOCK NORTH OF RT 66
ON MAIN STREET

774-3511

PASSENGER CAR SHOW ROOMS

322 W. SANTA FE • FLAGSTAFF, ARIZONA

CADILLAC ♦ OLDSMOBILE ♦ PONTIAC ♦ GMC

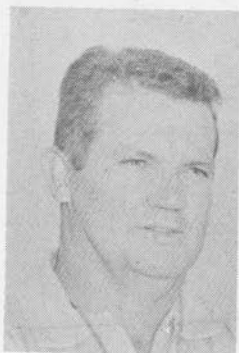
M
M Morris
M Motors

PR 4-2773

USED CAR AND TRUCK CENTER

216 W. SANTA FE • FLAGSTAFF, ARIZONA

LOGGER COACHES



HEAD COACH MAX SPILSBURY -- This season marks the ninth year for Coach Spilsbury as head football coach of the Arizona State College Lumberjacks. In his eight seasons at ASC, Spilsbury has compiled an outstanding record with 53 wins, 21 losses, and 5 ties. Last year the Lumberjacks finished with a 5-3-1 record.

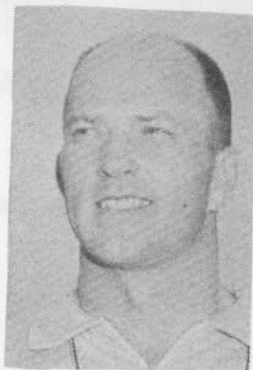
He graduated from the University of Arizona in 1950, where he was an outstanding end. Just prior to taking over as head football coach at ASC, he was line coach at the University.

Before going into college coaching, Coach Spilsbury spent five years coaching high school football and compiled a prep coaching record of 31 wins, 13 losses and 4 ties. His lifetime coaching record now stands at 84 wins, 34 losses, and 9 tie-games.

LINE COACH KEN GIBLER -- This is Gibler's third season as line coach for the ASC Lumberjack football team. As a high school coach at Blue Springs, Mo. for five years before coming to ASC, he compiled a record of 27 wins, 18 losses, and 4 ties.

Gibler played collegiate football at Missouri Valley College, and was an outstanding end. He graduated from there in 1957, and was co-captain of the team his senior year. He was a member of the Missouri Valley team that played in the Tangerine and Mineral Bowls. Also during his senior year, he was named to the Williamson All-American first team.

While in the U.S. Air Force he played service ball, and was named to the All-United Kingdom first team.

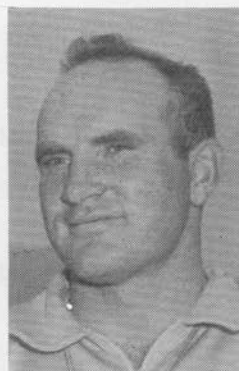


LOGGER COACHES

END COACH LEO HABERLACK -- A newcomer to the coaching staff this fall, Haberlack was assistant coach at Minot State College, N. Dakota for the past two years. A graduate of Minot State, he earned four letters in football and named to the NDIAC All-Conference squad.

Haberlack earned three letters in track. He also played service ball with the U.S. Army. Before joining Minot State coaching staff, he coached high school ball, wrestling, and track at Harvey, N.D., and Minot High.

At ASC he will be head track coach and assistant in wrestling.



BACKFIELD COACH BRAD LYNN -- Also a newcomer to the ASC coaching staff this year is Brad Lynn. Lynn, assistant professor of police science, was backfield coach at Notre Dame for the past five years, where he also played football.

His collegiate coaching also included Backfield coach at University of San Francisco for four years and 1 year at Cabrillo JC, Calif. He coached three years at Santa Cruz, Calif., High, where he compiled at 23-7, win-loss record.

Lynn is a graduate of Arizona State University, where he played one year of football. He has his MA in police science from Indiana University.



compliments

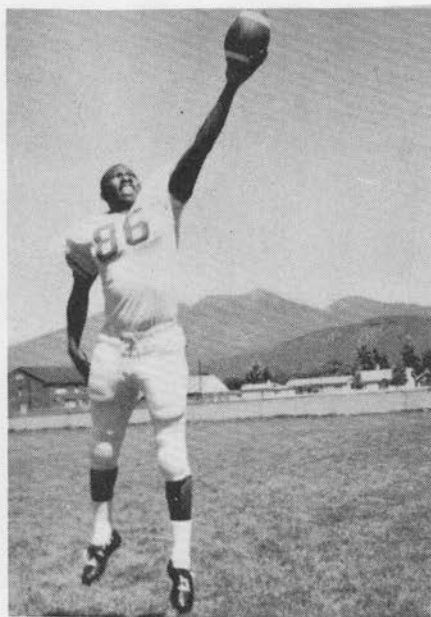
Coca-Cola Bottling Co.

SPRITE

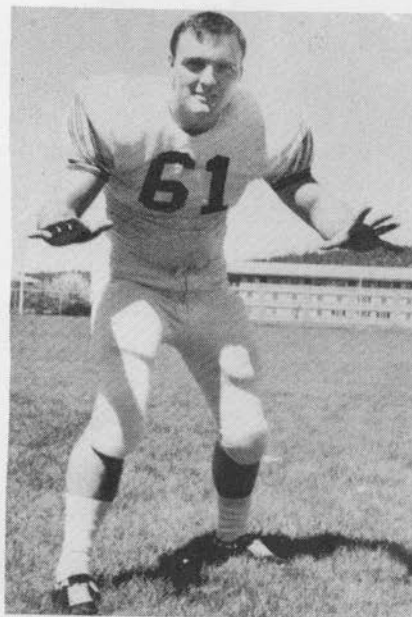
NESBITT'S

Flagstaff — Holbrook

Logger Veterans



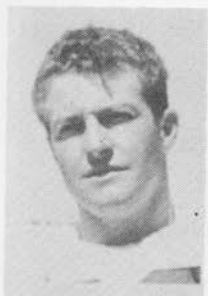
End Ed Lewis



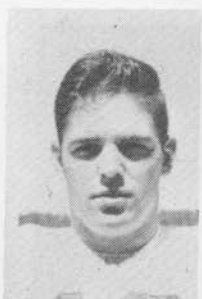
Guard - Linebacker Charles Harvell

Yiya's

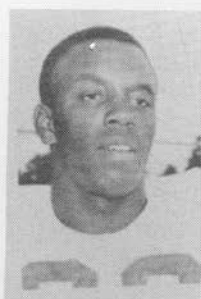
Lumberjack Squad



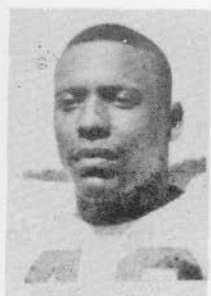
LARRY WELSH
14 - QB



TONY LINDSEY
16 - QB



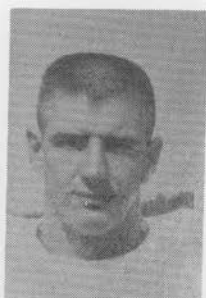
CHARLES LEE
20 - HB



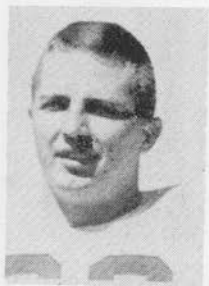
CHARLES STEVENSON
24 - HB



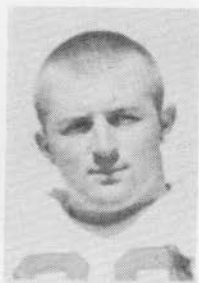
DAVID ESTRADA
28 - HB



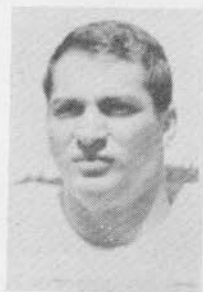
GARY BARNES
30 - FB



MONTE HARRIS
34 - FB

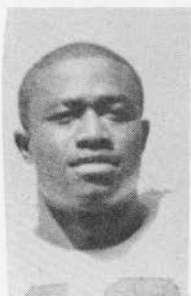


GEORGE HERMAN
38 - FB



JIM RUSSO
44 - HB

Lumberjack Squad



JIM SIMS
42 - HB



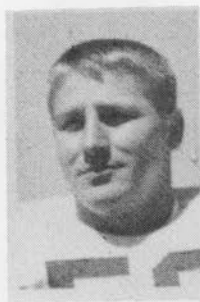
CRAIG BALLEW
46 - HB



HARRY HARTSELL
50



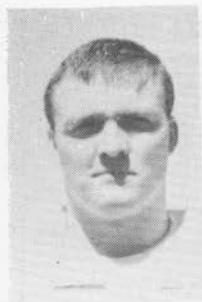
GARY CAMPBELL
52 - CENTER



BOB KRIZAN
56 - CENTER



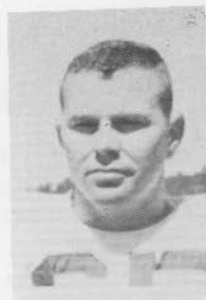
DAVE HARRIS
60 - GUARD



CHARLES HARVELL
61 - GUARD



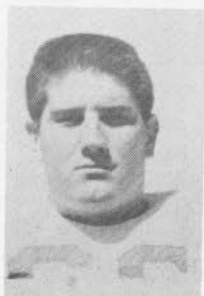
ERNIE DORA
62 - GUARD



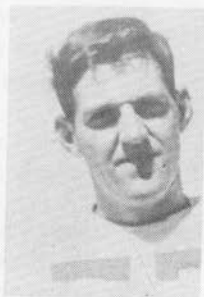
DAVE WATSON
63 - GUARD

SCHOOL SONGS

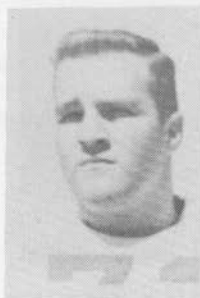
Lumberjack Squad



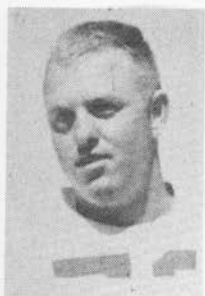
BOB SMITH
66 - GUARD



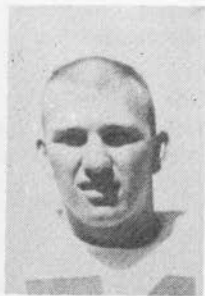
ERV RODGERS
70 - TACKLE



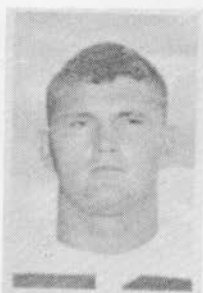
MIKE ST. LOUIS
71 - TACKLE



DAVE CAHILL
72 - END & TACKLE



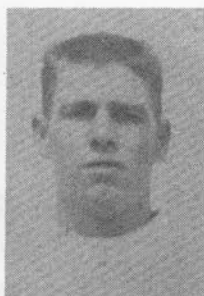
KEN GARVER
73 - TACKLE



JACK JAMES
74 - TACKLE



ALAN SHAVER
77 - TACKLE

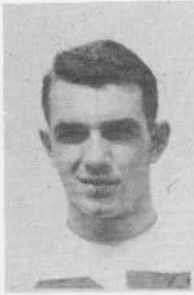


DALE KONOW
80 - End

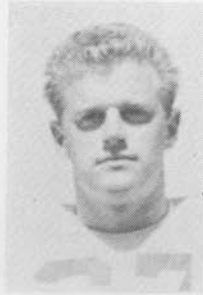


LARRY HANNUM
81 - END

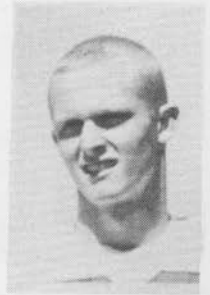
Lumberjack Squad



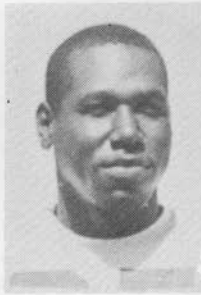
BILL HANNA
82 - END



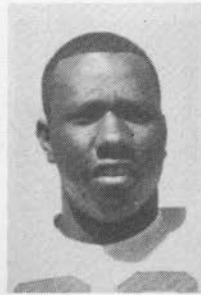
JIM KELLEY
83 - END



FRITZ KRUEZER
84 - END



BILL SHORTY
85 - End



ED LEWIS
86 - END

Spencer
Insurance Agency Inc.

"All Kinds of Insurance"

Serving Flagstaff Since 1926

18 N. Leroux

PR 4-4292

Compliments of . . .

GORDON'S

120 South Sitgreaves

Beverages and Sporting Goods

Flagstaff

Arizona

SCHOOL SONGS

TIMBER

(Official School Song)

Tim-ber, tim-ber, ev-ry body's wait-ing for tim-ber
Swing your axe, you Lum-berjacks
Tim-ber got to go down the riv-er today.
Tim-ber, tim-ber, can't you hear me call-in' for timber
Load that team, fill that stream
Tim-ber got to go down the riv-er today.
Saw-mill take that tree, cut out a ship for to sail the sea
Cut out a cab-in for me and mine, out of a whispering pine
Tim-ber, tim-ber, soon we'll need a cradle of tim-ber.
Swing your axe, you Lumberjacks.
Tim-ber's got to go down the river to-day.
Tim-ber's got to go down the river to-day.

ALMA MATER

Hail Alma Mater
Hail ASC
Thy name forever
A guiding light will be
Strong as the pine trees
Our love will never fail
To Thee, Alma Mater,
Hail! Hail! Hail!

LUMBERJACK SWING

Oh -- When those Lumberjacks all fall in line,
We're going to win a victory for another time,
We're going to make those touchdowns every time
We're going to fight, fight, fight for every yard we make
We're going to show them what real sports are like,
We're going to fight hard! Play hard all the time.
And when the whistle blows for the game to stop
Who'll be on top? A.S.C.

SCHOOL YELLS

- Spell Out Lumberjacks -

L-U-M-B-E-R-J-A-C-K-S (Spell out)
Lumberjacks! Hey!

- Give 'em the Axe -

Give 'em the axe, the axe, the axe!
Give 'em the axe, the axe, the axe!
Give 'em the axe
Give 'em the axe
Give 'em the axe, where?
Right in the neck, the neck, the neck!
Right in the neck, the neck, the neck!
Right in the neck
Right in the neck
Right in the neck, there!

- Yell, Yell -

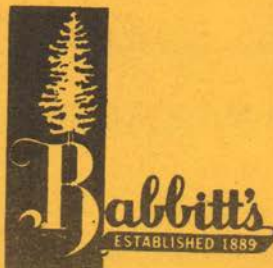
Yell, Yell, we have no yell!
But when we yell -
We yell like -
L-U-M-B-E-R-J-A-C-K-S
Lumberjacks!

- Axe Men -

A-a-a-x-e-m-m-m-e-n
A-a-a-x-e-m-m-m-e-n
A-a-a-x-e-m-m-m-e-n
AXEMEN AXEMEN AXEMEN!

ARIZONA (Spell Out)

A-R-I-Z-O-N-A (low and slow)
A-R-I-Z-O-N-A (loud and faster)
A-R-I-Z-O-N-A (loud and fast)
ARIZONA FIGHT!



FLAGSTAFF · WINSLOW · WILLIAMS
GRAND CANYON · HOLBROOK · PAGE

The 1889 Shop

GENTLEMEN'S APPAREL
FLAGSTAFF

CAMPUS
HEADQUARTERS
FOR
CLOTHES
OF
DISTINCTION



1964 Football Schedule

Date	Opponent	Time	Place
Sept. 19	Weber College, Ogden, Utah	8:00 p.m.	Here
Sept. 26	Arlington State College, Arlington, Texas	8:00 p.m.	Here
Oct. 3	Idaho State University, Pocatella	2:00 p.m.	There
Oct. 10	Colorado State, Greeley--Homecoming	2:00 p.m.	Here
Oct. 17	Cal Poly (Pomona)	8:00 p.m.	There
Oct. 24	Western New Mexico University, Silver City	1:30 p.m.	There
Oct. 31	Adams State College, Mom & Dad's Day	2:00 p.m.	Here
Nov. 14	Eastern New Mexico University, Portales	1:30 p.m.	There
Nov. 21	Santa Clara University	8:00 p.m.	There



Southwest Forest Industries

HELPING B-U-I-L-D a Greater Northern Arizona

KEEP ARIZONA GREEN!