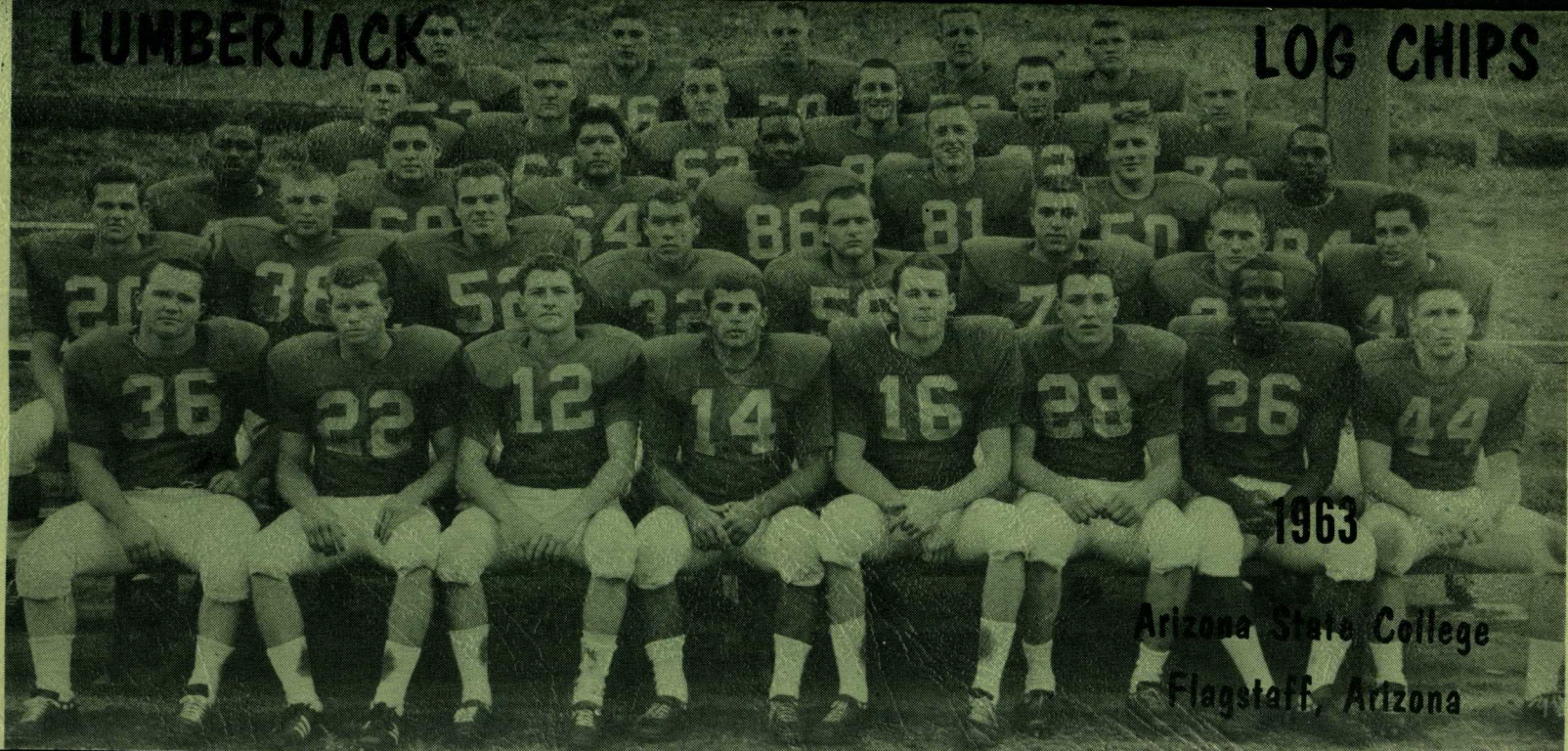


LUMBERJACK

LOG CHIPS



1963

Arizona State College  
Flagstaff, Arizona

## GENERAL INFORMATION

NAME OF COLLEGE: Arizona State College

LOCATION: Flagstaff, Arizona  
7,000 feet Altitude

ENROLLMENT: 3300 (Estimate for Fall Semester)

TEAM NICKNAMES: Lumberjacks, Loggers  
Axemen

COLLEGE COLORS: Blue and Gold

TYPE OF PLAY: "Slot T"

LUMBERJACK STADIUM: 3,000 Seating Capacity  
12, Press Box

CONFERENCE: Frontier Conference

PRESIDENT OF THE COLLEGE  
Dr. J. Lawrence Walkup

DIRECTOR OF ATHLETICS:  
Herb Gregg

HEAD FOOTBALL COACH:  
Max Spilsbury

Line Coach Ken Gibler

Assistant Coach Ed Van Winkle

DIRECTOR OF PUBLICITY:  
Melvin T. Hutchinson

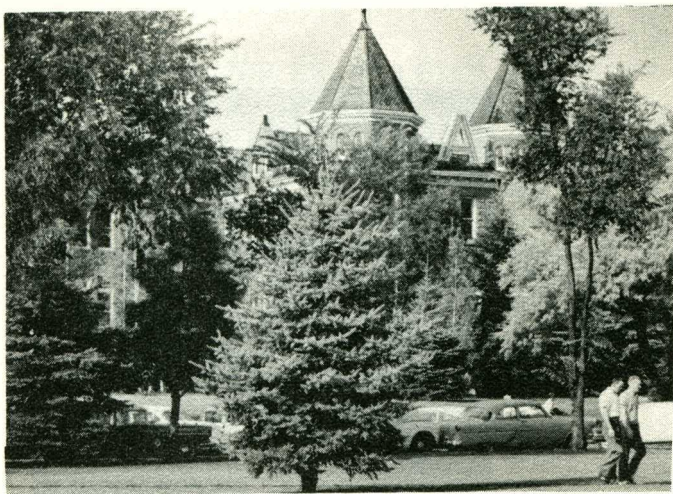
SPORTS PUBLICITY: Norman R. Borg

CHAIRMAN - INTER-COLLEGIATE SPORTS  
COMMITTEE: Dr. Lyle L. Mullens

For additional information or service, write or phone;

Director of Publicity  
Arizona State College  
Flagstaff, Arizona

774-6611, Extension 282



## THE COLLEGE

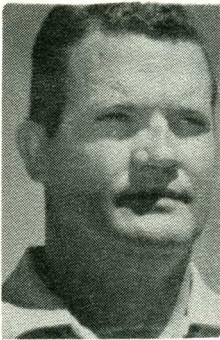
Established as the Northern Arizona Normal School in 1899 by the Twentieth Territorial Legislature, Arizona State College at Flagstaff started its first year with 23 students. This year the enrollment is expected to reach more than 3300 students working toward Bachelors or Masters Degree in Arts, Science or Education. Arizona State College is the only institution of higher learning in the Arizona-New Mexico area which confers the degree of Bachelor of Science in Forestry. The college also grants the Educational Specialist degree.

The 164-acre campus is located at the south edge of Flagstaff which nestles at the foot of the inspiring San Francisco Peaks. More than a mile high - 7,000 feet - Flagstaff is in the center of the Coconino National Forest, on the main line of the Santa Fe Railroad and on U.S. Highways 66 and 89. It is the hub of a vast vacation land - pine forest, mountains, canyons, and Indian dwellings, both ancient and modern. Lakes and streams provide recreation for picnickers and fisherman. Population of the Flagstaff area is estimated at nearly 24,000.

Arizona State College is fully accredited by the National Commission for Accreditation of Teacher Education and is a member of the North Central Association of Colleges and Secondary Schools. The college is also approved by the American Association of University Women.

**COACH MAX SPILSBURY**  
**HEAD LUMBERJACK COACH**

Since taking over the helm as head football coach of the Arizona State College Lumberjacks in 1956, Max Spilsbury has guided the Lumberjacks through six winning seasons, five Frontier Conference championships, an undefeated season in 1958, and to the National Intercollegiate Athletic Association's Nationally Televised Holiday Bowl in St. Petersburg, Fla. in 1958.



During those years, Coach Spilsbury has compiled an enviable collegiate football record of 48 wins, 18 losses, and 4 ties. In his freshman year, he went beyond all expectations with a crop of freshmen to win eight games while losing two and snap the Axers nine-year drought of a winning season.

Prior to his appointment as head coach of the Lumberjacks, Spilsbury was line coach of the University of Arizona "Wildcats", where he was an outstanding end for four years. Following his graduation from the U of A in 1950, Coach Spilsbury coached five years of high school football - two years at Globe High School, and three years at Bisbee High School. In 1954, under Spilsbury, Bisbee with a 9-0 record, won the mythical state high school football championship. Coach Spilsbury has never had a losing season, and with his high school record of 31 wins, 13 losses, and 4 ties, he has compiled an outstanding football coaching record of 79 wins, 31 losses, and 8 ties.

Coach Spilsbury is a firm believer in physical fitness, and his rugged training program for members of the football squad has paid off by the small number of football injuries.

# ARIZONA STATE COLLEGE, FLAGSTAFF

## Lumberjack Football Records Since 1925

Year	Won	Lost	Tied	Coach
1925	1	2	1	Talbert D. Jessuppe 1-2-1
1926	No records available			E. H. "Sweed" Lynch
1927	6	1	2	" " 6-1-2
1928	7	1	0	Rudy Lavik
1929	5	0	0	" "
1930	4	2	1	" "
1931	3	4	0	" "
1932	3	2	2	" " 22-9-3
1933	5	1	0	Mark McIntosh
1934	1	5	1	" "
1935	3	3	3	" " 9-9-4
1936	3	4	1	Garrett Arbelbide
1937	5	5	0	" "
1938	2	6	1	" "
1939	1	6	1	" " 11-21-3
1940	2	6	0	Maurice Moulder
1941	3	5	0	" "
1942	1	5	0	" " 6-16-0
1943	1	1	0	Frank Brickey
1944	2	2	0	" "
1945	2	3	0	" "
1946	5	2	2	" " 10-8-2
1947	1	7	0	Nick Ragus
1948	4	5	0	" " 5-12-0
1949	1	6	1	Emil Ladyko 1-6-1
1950	2	6	0	Ben J. Reiges 2-6-0
1951	1	7	0	John Pederson
1952	3	4	0	" "
1953	4	5	0	" " 8-16-0
1954	3	6	0	Earl F. "Jiggs" Insley
1955	0	9	0	" " 3-15-0
# 1956	8	2	0	Max Spilsbury
## 1957	8	1	0	" "
### 1958	10	0	0	" " 26-3-0
	*11	**1		" " 27-4-0
## 1959	6	2	1	" " 33-6-1
# 1960	6	3	2	" " 39-9-3
1961	3	5	1	" " 42-14-4
1962	6	4	0	" " 48-18-4
Totals	132	139	10	

\* Post Season game for NAIA playoff with Gustavus Adolphus, St. Peters, Minn. Lumberjacks won 41-12

\*\* Holiday Bowl game for NAIA championship in St. Petersburg, Fla. Lumberjacks lost 13-19 against Northeastern Oklahoma, Tahlequah

# Frontier Conference co-champions

## Frontier Conference champions

### Frontier Conference champions and undefeated in regular schedule. Ranked second in NAIA national standings.

## LUMBERJACKS OUTLOOK

Twenty-two veterans from the 1962 squad, three other veterans back after a year's absence, and six newcomers to the spring squad makes up the nucleus of the 1963 Lumberjack football squad.

Potentially the Lumberjacks could be one of the strongest team in years, according to Head Coach Max Spilsbury, but added that the Axer schedule is equally stronger, which "will press us hard to improve on our 1962 record of six wins and four losses."

Of the twenty-two returning lettermen, 21 are from the first two team of last year. Returning after a year's absence are end Bill Shorty, 6-2, 205-pound junior; fullbacks Tot Workman, 5-6, 175-pound junior; and Bob Claborn, 5-10, 175-pound junior, extra point and place kicker.

Three-deep at most positions, the interior line needs some bolstering, and Coach Spilsbury will probably have to call on incoming freshmen to fill the gap at center, guard, and tackle.

At the outset of practice this fall, Coach Spilsbury suffered the loss of spring-ball standout, end John Klein, JC transfer, due to a physical disability discovered during opening-day physicals. Also, veteran tackle Jack James, 6-4, 220-pounds, was knocked out of the lineup for four-five weeks with a broken bone in his foot; and additional headaches concerning the tackle spot developed for Coach Spilsbury, when Ken Garver, 6-2, 215-pound JC transfer and spring-ball standout, was knocked out for the season with a broken left wrist.

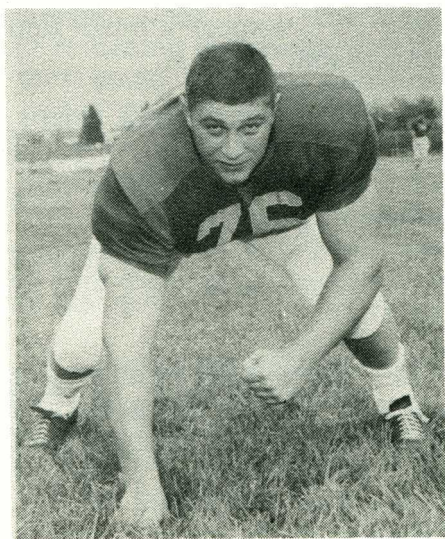
Back to give experience and strength to the Axer line are tackles Rex Mirich, 6-4, 275-pound NAIA All-American; Owen Dejanovich, 6-2, 240-pounds; and Jim Oman,

6-5, 240-pounder; center Gary Campbell, 6-1, 185-pounds; guards Charles Harvell, 5-11, 195-pounder; Art Pena, 5-10, 190; Ernie Dora, 6-1, 210; and Jim Fernandez, 6-0, 215 pounds.

Back with Shorty at end are veterans Larry Schultz, 6-3, 210 pounds, and Ed Lewis, 6-1, 200 pounds. Bolstering the end are Larry Hannum, 6-3, 205-pound JC transfer, and Joe Perez, 6-2, 185-pound JC transfer, a kicking specialist as well as a good receiver. Both Hannum and Perez played spring ball.

To spark the Axer backfield will be last season's leading ground-gainer, David Estrada, 6-0, 200-pound halfback, along with speedster, Jim Sims, 5-10, 175-pound veteran halfback; Wally Hill, 5-9, 170-pound halfback. Adding speed and strength to the Lumberjack backfield are spring-ball standouts Jim Russo, 5-9, 185-pound halfback, a JC transfer; and George Herman, 5-11, 205-pound fullback, also a JC transfer.

Three veteran quarterbacks will guide the Axers this fall, Larry Welsh, 5-8, 170 pounds; Tom Conway, 6-3, 190-pounder; and Art Schilling, 5-7, 170 pounds.



Rex Mirich - Captain - All-American

# Lumberjack

Sept. 21 - WHITTIER POETS at Flagstaff . . . With 22 returning lettermen the Poets should be tough again this year, even though they lack experienced tackles . . . Poets had an 8-1-0 season last year and dropped the Axers 29-20. Series stands at 12-3 in favor of Whittier.

Sept. 28 - SANDIEGO MARINES' DEVIL-DOGS at Flagstaff . . . Always tough competition . . . Had an 8-2-0 record last season . . . Expect to have a better squad this season . . . Have plenty of weight and speed . . . Axers defeated them in their only contest, 25-19, back in '58.

Sept. 29 - IDAHO STATE UNIVERSITY in annual Homecoming Game . . . Last year the Axers spoiled the BENGALS homecoming, 35-26 . . . They'll be looking for revenge . . . Have 17 returning lettermen plus some outstanding transfers and upcoming sophomores . . . Since 1951, the Bengals have a 4-2 edge in the series with the Axers . . . Had a 3-6-0 record last season . . . Expect a much improved squad this season.

Oct. 12 - NEW MEXICO HIGHLANDS COWBOYS at Las Vegas . . . Faced with a rebuilding problem this year . . . Only 10 experience lettermen this fall . . . The Axers have a 9-3-2 edge in the series with the Cowboys. Last year they dropped Highlands 17-0.

Oct. 19 - MONTANA STATE BOBCATS at Bozeman . . . Its the Bobcats homecoming and they'll be going all-out for a win . . . Under a new coach, Bobcats have a seasoned backfield with 18 returning lettermen. Building a line is biggest problem . . . Dropped the Axers 27-6 last year. Bobcats had 7-3-0 season in '62.



# Opponents

Oct. 26 - WESTERN NEW MEXICO MUSTANGS at Flagstaff, in the annual Mom and Dad's Day game . . . The Mustangs have 14 returning lettermen and will have to depend on incoming freshmen to bolster the squad . . . Last year the Axers defeated the Mustangs 34-7, giving the Lumberjacks a series edge of 12-5-1.

Nov. 2 - CAL POLY BRONCOS at Flagstaff . . . They are faced with a tremendous rebuilding job with only three players from last year's second unit as a nucleus . . . Last season the Broncos compiled an impressive 9-1 record, and defeated the Lumberjacks for the third straight year, 38-0 to build a 3-2-1 series edge . . . The Lumberjacks haven't defeated the Broncos since '59 when they tied 7-7, and won in '58, 16-8.

Nov. 9 - WESTERN STATE COLLEGE at Gunnison, Colo. . . . The Mountaineers has 20 returning lettermen which indicates that they could be tough this season, and with some good transfers, have depth at all positions except center . . . Last year they wound up with a 5-4 win-loss record . . . The Lumberjacks boosted their series edge to 5-3 with a 20-7 victory last year.

Nov. 16 - EASTERN NEW MEXICO GREYHOUNDS at Globe, Arizona . . . The Greyhounds have always provided tough competition for the Lumberjacks, and with 20 returning lettermen from the '62 squad that posted a 7-3 mark, should again be tough for the Lumberjacks . . . Last year the Greyhounds blanked the Axers, 19-0, to knot up the series at 4-4.

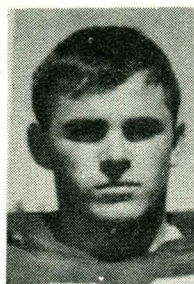
# 63 Lumberjack Roster

No.	Name	Pos.	Ht.	Wt.	Age	Class	Exp.	Home Town
12	Larry Welsh	QB	5-8	170	22	Soph.	1 & Army	Lakewood, Colo.
14	Art Schilling	QB	5-7	170	21	Jr.	1 & Tr.	Peoria, Ill.
16	Tom Conway	QB	6-3	190	20	Sr.	1 & JC	Pasadena, Calif.
18	Tony Lindsey	QB	5-11	185	18	Fr.	0	Marana, Ariz.
20	Charles Lee	LH	5-8	170	18	Fr.	0	Liberty, Mo.
22	Duke Archer	LH	5-9	170	22	Jr.	Tr.	Phoenix, Ariz.
24	Wally Hill	LH	5-9	170	21	Sr.	1 & JC	Bowling Green, KY.
26	George Williams	LH	6-1	180	23	Sr.	1 & Tr.	Pasadena, Calif.
28	David Estrada	LH	6-0	200	21	Jr.	2	Lordsburg, N.M.
30	Monte Harris	HB	6-1	200		Jr.	2	Holbrook, Arizona
32	Bob Claborn	FB	5-10	175	21	Jr.	2	Aztec, N.M.
34	Ed Hawkins	FB	5-7	180	21	Sr.	1 & JC	Gonzales, La.
36	Tot Workman	FB	5-6	175	22	Jr.	2	St. David, Ariz.
38	George Herman	FB	5-11	195	19	Soph.	JC	Pinetop, Ariz.
	Lester Berry	FB	5-9	192	30	Fr.	0	Flagstaff, Ariz.
	Wayne Melton	FB	5-10	190	18	Fr.	0	Covina, Calif.
40	Don Smith	RH	5-7	175	19	Fr.	0	St. Augustine, La
42	Jim Sims	RH	5-10	175	21	Jr.	2	Tucson, Ariz.
44	Jim Russo	RH	5-9	185	20	Jr.	JC	Blue Island, Ill.
46	Gary Kiepkke	RH	5-11	170	18	Fr.	0	Show Low, Ariz.
48	Craig Ballew	RH	5-10	175	19	Fr.	0	Las Vegas, Nev.
50	Alex Durate	C	6-0	195	19	Fr.	0	San Dimas, Calif.
52	Gary Campbell	C	6-1	185	20	Soph.	1	Azusa, Calif.
54	Dave Harris	LG	6-2	185	18	Fr.	0	Carmel, Calif.
56	Bob Krizan	C	6-1	205	20	Soph.	1	Industry, Pa.
60	Ruben Reyes	LG	5-10	190	22	Sr.	3	Miami, Arizona
61	Charles Harvell	RG	5-11	195	20	Jr.	2	Lordsburg, N.M.
62	Ernie Dora	RG	6-1	210	21	Jr.	1	Globe, Arizona
63	Jim Fernandez	LG	6-0	215	22	Sr.	3	Clifton, Ariz.
64	Bill Southwell	RG	5-10	195	18	Fr.	0	San Diego, Calif.
65	Art Pena	LG	5-10	190	23	Sr.	1 & JC	Camarillo, Calif.
66	Bob Smith	RG	6-0	215	18	Fr.	0	Long Beach, Calif.
70	Mike St. Louis	LT	6-4	240	20	Fr.	0	Kansas, City, Mo.
72	Dave Cahill	LT	6-3	215	22	Soph.	1	Tempe, Ariz.
73	Jim Oman	LT	6-5	240	21	Sr.	1 & JC	Palmdale, Calif.
74	Owen Dejanovich	RT	6-2	240	24	Sr.	1 & JC	Thornton, Ill.
75	Jack James	LT	6-4	220	21	Jr.	2	Coolidge, Ariz.
76	Rex Mirich	RT	6-4	270	22	Sr.	3	San Manuel, Ariz.
77	Alan Shaver	RT	6-1	270	18	Fr.	0	Willcox, Ariz.
80	Joe Perez	WE	6-2	185	23	Jr.	JC	San Jose, Calif.
81	Larry Hannum	TE	6-3	205	21	Jr.	JC	Phoenix, Ariz.
82	Larry Schultz	WE	6-3	210	22	Sr.	1 & JC	Winter Garden, Fla.
83	Fritz Kruezer	WE	6-1	180	18	Fr.	0	Las Vegas, Nev.
84	Dennis Bunker	TE	5-11	190	18	Fr.	0	Las Vegas, Nev.
85	Bill Shorty	TE	6-2	205	21	Soph.	1	Eloy, Ariz.
86	Edmond Lewis	WE	6-1	200	20	Jr.	2	Douglas, Ariz.
87	Jim Kelley	TE	6-4	210	18	Fr.	0	Carmel, Calif.

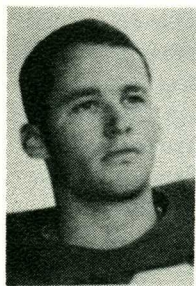
# Lumberjack Squad



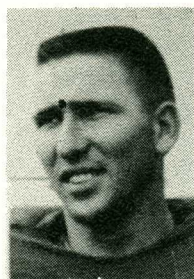
LARRY WELSH  
QUARTERBACK-No. 12



ART SCHILLING  
QUARTERBACK-No. 14



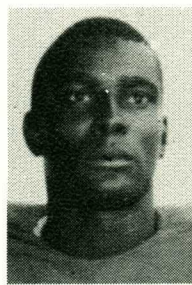
TOM CONWAY  
QUARTERBACK-No. 16



WALLY HILL  
HALFBACK-No. 24



DUKE ARCHER  
HALFBACK-No. 22

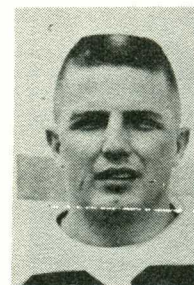


GEO. WILLIAMS  
HALFBACK-No. 26

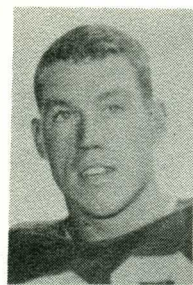
# Lumberjack Squad



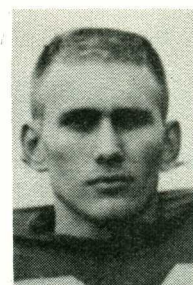
DAVID ESTRADA  
HALFBACK-No. 28



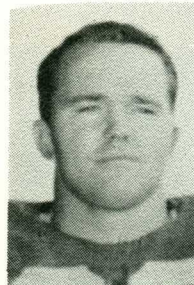
MONTE HARRIS  
FULLBACK-No. 30



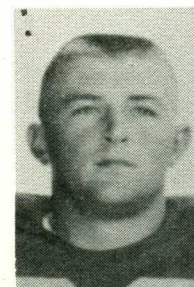
BOB CLABORN  
FULLBACK-No. 32



ED HAWKINS  
FULLBACK-No. 34

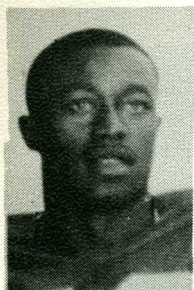


TOT WORKMAN  
FULLBACK-No. 36

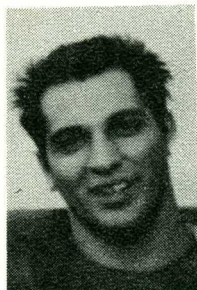


GEORGE HERMAN  
FULLBACK-No. 38

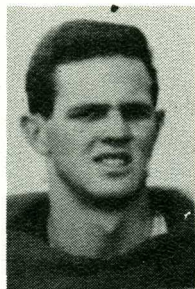
# Lumberjack Squad



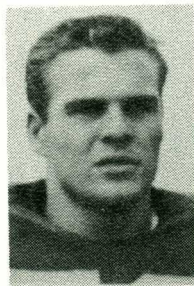
JIM SIMS  
HALFBACK-No. 42



JIM RUSSO  
HALFBACK-No. 44



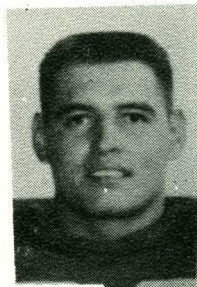
CRAIG BALLEEN  
HALFBACK-No. 48



GARY CAMPBELL  
CENTER-No. 52

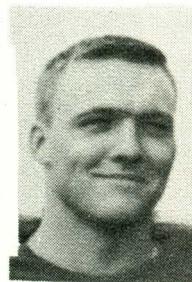


BOB KRIZAN  
CENTER-No. 56

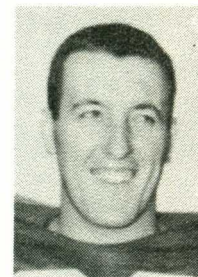


RUBEN REYES  
GUARD-No. 60

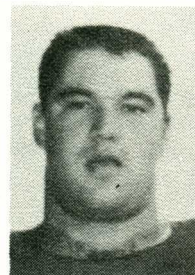
# Lumberjack Squad



CHARLES HARVELL  
GUARD-No. 61



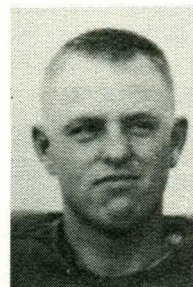
ERNIE DORA  
GUARD-No. 62



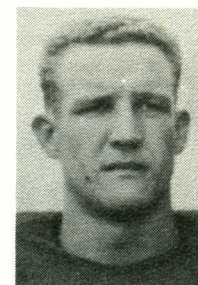
JIM FERNANDEZ  
GUARD-No. 63



ART PENA  
GUARD-No. 65

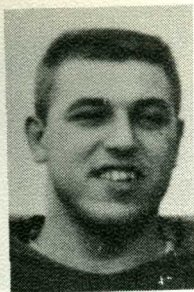


DAVE CAHILL  
TACKLE-No. 72

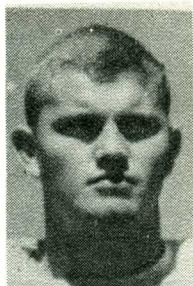


JIM OMAN  
TACKLE-No. 73

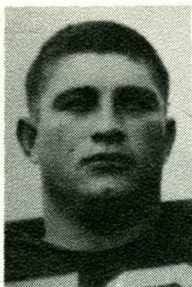
# Lumberjack Squad



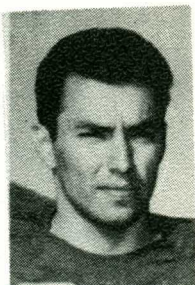
OWEN DEJANOVICH  
TACKLE-No. 74



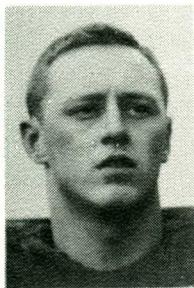
JACK JAMES  
TACKLE-No. 75



REX MIRICH  
TACKLE-No. 76



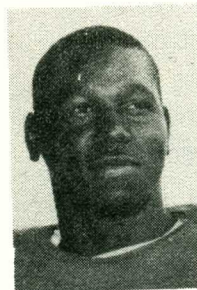
JOE PEREZ  
END- No. 80



LARRY HANNUM  
END-No. 81



LARRY SCHULTZ  
END-No. 82



BILL SHORTY  
END-No. 84



ED LEWIS  
END-No. 86

## QUARTERBACKS . . . . .

12 - LARRY WELSH . . . 5-8, 170-pound sophomore lettermen from Lakewood, Colo. . . . . three-year high school lettermen at QB . . . smart field general . . . dangerous runner . . . played lots of ball last year . . . due for a good season.

16 - TOM CONWAY . . . 6-3, 190-pound senior Pasadena City College where L.A. Times named him All-American two straight years . . . played end and quarterback for Axers last year . . . good passer and receiver . . . four-sport lettermen in high school.

## HALFBACKS . . . . .

24 - WALLY HILL . . . 5-10, 170-pound senior letterman from Bowling Green, Ky. . . . JC transfer from East Central . . . elusive runner . . . led Axers in pass interceptions last year . . . good defensive cornerback . . . will play lots of ball this year.

28 - DAVID ESTRADA . . . 6-1, 200-pound two-year veteran from Lordsburg, N.M. . . . Last year's leading ground gainer for the Axers . . . speedy, hard-charging runner . . . hard to stop . . . spark plug for Axer offense . . . high school all-stater . . . earned Lumberjack track letter . . . Potential All-American.

42 - JIM SIMS . . . 5-9, 175-pound junior from Tucson . . . two-year letterman . . . quick, elusive runner . . . fast . . . should hit peak this year . . . Arizona All-Stater two years straight . . . watch him.

## FULLBACKS . . . . .

38 - GEORGE HERMAN . . . 5-11, 205-pound sophomore . . . spring transfer from Eastern Arizona JC . . . tough runner . . . hard to stop . . . adds power to Axer offensive backfield . . . played high school ball four years at NMcNary . . . keep an eye on him.

## CENTERS . . . . .

52 - GARY CAMPBELL . . . 6-1, 185-pound sophomore letterman from Azusa, Calif. . . . good offensive center . . . rugged linebacker . . . moves good . . . will play a lot this season.

## GUARDS . . . . .

61 - CHARLES HARVELL . . . 5-11, 195-pound junior from Lordsburg, N. M. . . . two-year veteran . . . moves fast . . . hard-tackling linebacker . . . good combination with Campbell on defense . . . he'll play a lot this season.

## TACKLES . . . . .

72 - DAVE CAHILL . . . 6-3, 210-pound sophomore from Tempe . . . Injured early in season last year . . . ready to go this year . . . will see a lot of action as defensive end . . . needs more experience on offense.

73 - JIM OMAN . . . 6-5, 240-pound senior from Palmdale, Cali. . . . returning letterman . . . JC transfer from Antelope Valley . . . should see more action this year . . . plays both offense and defense . . . tough . . . good speed . . . also lettered in track, running sprints.

74 - OWEN DEJANOVICH . . . 6-2, 240-pound senior letterman from Thornton, Ill. . . . two-year JC All-American at Thornton JC . . . played Marine ball . . . tough on offense and defense . . . a leader . . . key Lumberjack lineman.

75 - JACK JAMES . . . 6-4, 220-pound junior from Coolidge . . . two-year letterman . . . played end last season, but move back to tackle this year . . . quick and strong . . . lettered in wrestling at ASC . . . all-conference in high school football . . . all-state high school basketball . . . injured . . . will miss a number of games.

76 - REX MIRICH . . . 6-4, 270-pound senior from San Manuel . . . three-year letterman . . . NAIA All-American . . . draft choice of Minnesota Vikings . . . rugged, hard-charging middle guard on defense . . . hard to stop . . . biggest man on the squad . . . should be his best year . . .

## ENDS . . . . .

80 - JOE PEREZ . . . 6-2, 185-pound transfer from San Jose, Calif., City College . . . played spring ball . . . good receiver . . . outstanding punter . . . can help the Lumberjacks . . . MVP at San Jose City College . . . earned letters in basketball and track also at San Jose.

81 - LARRY HANNUM . . . 6-3, 205-pound JC transfer from Phoenix College . . . a spring transfer . . . played lots of spring ball . . . will see action as tight end and degensive end . . . three-year letterman at Camelback High where he was named outstanding player two years in a row.

82 - LARRY SCHULTZ . . . 6-3, 210-pound senior returning letterman from Winter Garden, Fla. . . . Transfer from East Central JC, Miss. . . . good receiver . . . plays wide end.

85 - BILL SHORTY . . . 6-2, 205-pound tight end . . . sophomore from Eloy . . . lettered in '61 . . . sat out last year . . . one of the best blockers on the squad . . . former Arizona All-Stater . . . also plays defensive tackle . . . will see a lot of action this season.

Offensive Depth Chart

Tight End	Left Tackle	Left Guard	Center	Right Guard	Right Tackle	Wide End
85 Shorty	73 Oman	63 Fernandez	52 Campbell	61 Harvell	74 Dejanovich	86 Lewis
81 Hannum	75 James	65 Pena	56 Krizan	62 Dora	76 Mirich	82 Schultz
87 Kelley	72 Cahill	60 Reyes	50 Duarte	66 Smith	77 Shaver	80 Perez
84 Bunker	70 St. Louis					83 Kruezer

Quarterback

12 Welsh  
14 Schilling  
16 Conway  
18 Lindsey

Left Halfback

28 Estrada  
24 Hill  
26 Williams  
20 Lee  
24 Archer

Fullback

38 Herman  
36 Workman  
32 Calbam  
34 Hawkins  
30 Melton

Right Halfback

42 Sims  
44 Russo  
46 Kiepke  
40 D. Smith  
48 Ballew

Defensive Lineup

Left End	Left Tackle	Middle Guard	Right Tackle	Right End
81 Hannum	74 Dejanovich	76 Mirich	73 Oman	72 Cahill
82 Schultz	85 Shorty	63 Fernandez	75 James	86 Lewis
83 Kruezer	77 Shaver	62 Dora	70 St. Louis	87 Kelley

Left Linebacker

61 Harvell  
65 Pena  
66 Smith

Right Linebacker

52 Campbell  
34 Hawkins  
54 Dave Harris

Left Cornerback

24 Hill  
44 Russo  
28 Estrada

Right Cornerback

60 Reyes  
36 Workman  
38 Herman

Left Safety

18 Conway  
48 Ballew  
22 Archer  
14 Schilling  
40 D. Smith

Right Safety

26 Williams  
12 Welsh  
42 Sims  
46 Kiepke  
20 Lee

## 1962 FOOTBALL RECORD

Our Score	Opponent	Their Score
6	Montana State (Bozeman)	27
16	Adams State (Alamosa, Colo.)	0
20	Western State (Gunnison, Colo.)	7
35	Idaho State (Pocatello)	26
17	New Mexico Highlands (Las Vegas)	0
21	Cal Poly (San Luis Obispo, Calif.)	20
34	New Mexico Western (Silver City)	7
0	Cal Poly (Pomona, Calif.)	38
20	Whittier College, (Calif.)	29
0	Eastern New Mexico (Portales, N.M.)	19

Won 6 - Lost 4 - Tied 0

Coach Max Spilsbury's Collegiate Record - Won 48, Lost 18 Tied 4

## 1963-64 BASKETBALL SCHEDULE

Date	Opponent	Where Played
Dec. 2	Western State College, Gunnison, Colo.	Gunnison, Colo.
Dec. 3	Adams State College, Alamosa, Colo.	Alamosa, Colo.
Dec. 10	Grand Canyon College, Phoenix, Ariz.	Flagstaff
Dec. 14	University of Arizona, Tucson	Tucson
Dec. 16	California Western College, San Diego	Flagstaff
Dec. 18	St. Michael's College, Santa Fe, N.M.	Flagstaff
Jan. 10	St. Michael's College	Santa Fe, N.M.
Jan. 11	Fort Lewis A & M, Durango, Colo.	Durango, Colo.
Jan. 14	Grand Canyon College, Phoenix	Phoenix
Jan. 16	College Southern Utah, Cedar City	Flagstaff
Jan. 18	Westminster College, Salt Lake City	Flagstaff
Jan. 25	Western New Mexico, Silver City	Flagstaff
Jan. 30	University of Arizona	Flagstaff
Feb. 1	Eastern New Mexico University, Portales	Portales, N.M.
Feb. 3	Nevada Southern University, Las Vegas	Flagstaff
Feb. 7	College of Souther Utah	Cedar City, Utah
Feb. 8	Westminster College	Salt Lake City, Utah
Feb. 12	Western New Mexico University	Silver City, N.M.
Feb. 17	California Western College	San Diego, Calif.
Feb. 18	Nevada Southern University	Las Vegas, Nev.
Feb. 20	Fort Lewis A & M	Flagstaff
Feb. 22	Eastern New Mexico University	Flagstaff

1962-63 Season's Record - Won 11, Lost 10

Head Coach - Herb Gregg (1949) Varsity Record - Won 162, Lost 147

## 1963 LUMBERJACK FOOTBALL SCHEDULE

Date	Opponent	Series Start	Record			Place	Time
			W	L	T		
Sept. 21	Whittier College (Calif.)	1930	3	12	0	Flagstaff	8 p.m.
Sept. 28	San Diego Marines	1958	1	0	0	Flagstaff	8 p.m.
Oct. 5	Idaho State University (HOMECOMING)	1951	2	4	0	Flagstaff	2 p.m.
Oct. 12	New Mexico Highlands	1937	9	3	2	Las Vegas, N.M.	1:30 p.m.
Oct. 19	Montana State College	1962	0	1	0	Bozeman	2 p.m.
Oct. 26	New Mexico Western (MOM & DAD'S DAY)	1925	12	5	1	Flagstaff	2 p.m.
Nov. 2	Cal Poly (Pomona)	1935	2	3	2	Flagstaff	8 p.m.
Nov. 9	Colorado Western	1934	5	3	0	Gunnison, Colo.	1:30 p.m.
Nov. 16	Eastern New Mexico	1941	4	4	0	Globe, Ariz.	8 p.m.



## 1962 FOOTBALL RECORD

Our Score	Opponent	Their Score
6	Montana State (Bozeman)	27
16	Adams State (Alamosa, Colo.)	0
20	Western State (Gunnison, Colo.)	7
35	Idaho State (Pocatello)	26
17	New Mexico Highlands (Las Vegas)	0
21	Cal Poly (San Luis Obispo, Calif.)	20
34	New Mexico Western (Silver City)	7
0	Cal Poly (Pomona, Calif.)	38
20	Whittier College, (Calif.)	29
0	Eastern New Mexico (Portales, N.M.)	19

Won 6 - Lost 4 - Tied 0

Coach Max Spilsbury's Collegiate Record - Won 48, Lost 18 Tied 4

## 1963-64 BASKETBALL SCHEDULE

Date	Opponent	Where Played
Dec. 2	Western State College, Gunnison, Colo.	Gunnison, Colo.
Dec. 3	Adams State College, Alamosa, Colo.	Alamosa, Colo.
Dec. 10	Grand Canyon College, Phoenix, Ariz.	Flagstaff
Dec. 14	University of Arizona, Tucson	Tucson
Dec. 16	California Western College, San Diego	Flagstaff
Dec. 18	St. Michael's College, Santa Fe, N.M.	Flagstaff
Jan. 10	St. Michael's College	Santa Fe, N.M.
Jan. 11	Fort Lewis A & M, Durango, Colo.	Durango, Colo.
Jan. 14	Grand Canyon College, Phoenix	Phoenix
Jan. 16	College Southern Utah, Cedar City	Flagstaff
Jan. 18	Westminster College, Salt Lake City	Flagstaff
Jan. 25	Western New Mexico, Silver City	Flagstaff
Jan. 30	University of Arizona	Flagstaff
Feb. 1	Eastern New Mexico University, Portales	Portales, N.M.
Feb. 3	Nevada Southern University, Las Vegas	Flagstaff
Feb. 7	College of Souther Utah	Cedar City, Utah
Feb. 8	Westminster College	Salt Lake City, Utah
Feb. 12	Western New Mexico University	Silver City, N.M.
Feb. 17	California Western College	San Diego, Calif.
Feb. 18	Nevada Southern University	Las Vegas, Nev.
Feb. 20	Fort Lewis A & M	Flagstaff
Feb. 22	Eastern New Mexico University	Flagstaff

1962-63 Season's Record - Won 11, Lost 10

Head Coach - Herb Gregg (1949) Varsity Record - Won 162, Lost 147

### Offensive Depth Chart

Tight End	Left Tackle	Left Guard	Center	Right Guard	Right Tackle	Wide End
85 Shorty	73 Oman	63 Fernandez	52 Campbell	61 Harvell	74 Dejanovich	86 Lewis
81 Hannum	75 James	65 Pena	56 Krizan	62 Dora	76 Mirich	82 Schultz
87 Kelley	72 Cahill	60 Reyes	50 Duarte	66 Smith	77 Shaver	80 Perez
84 Bunker	70 St. Louis					83 Kruezer

#### Quarterback

12 Welsh  
14 Schilling  
16 Conway  
18 Lindsey

#### Left Halfback

28 Estrada  
24 Hill  
26 Williams  
20 Lee  
24 Archer

#### Fullback

38 Herman  
36 Workman  
32 Calborn  
34 Hawkins  
30 Melton

#### Right Halfback

42 Sims  
44 Russo  
46 Kiepke  
40 D. Smith  
48 Ballew

### Defensive Lineup

Left End	Left Tackle	Middle Guard	Right Tackle	Right End
81 Hannum	74 Dejanovich	76 Mirich	73 Oman	72 Cahill
82 Schultz	85 Shorty	63 Fernandez	75 James	86 Lewis
83 Kruezer	77 Shaver	62 Dora	70 St. Louis	87 Kelley

#### Left Linebacker

61 Harvell  
65 Pena  
66 Smith

#### Right Linebacker

52 Campbell  
34 Hawkins  
54 Dave Harris

#### Left Cornerback

24 Hill  
44 Russo  
28 Estrada

#### Right Cornerback

60 Reyes  
36 Workman  
38 Herman

#### Left Safety

18 Conway  
48 Ballew  
22 Archer  
14 Schilling  
40 D. Smith

#### Right Safety

26 Williams  
12 Welsh  
42 Sims  
46 Kiepke  
20 Lee

Offensive Depth Chart

Tight End	Left Tackle	Left Guard	Center	Right Guard	Right Tackle	Wide End
85 Shorty	73 Oman	63 Fernandez	52 Campbell	61 Harvell	74 Dejanovich	86 Lewis
81 Hannum	75 James	65 Pena	56 Krizan	62 Dora	76 Mirich	82 Schultz
87 Kelley	72 Cahill	60 Reyes	50 Duarte	66 Smith	77 Shaver	80 Perez
84 Bunker	70 St. Louis					83 Kruezer

Quarterback

12 Welsh  
14 Schilling  
16 Conway  
18 Lindsey

Left Halfback

28 Estrada  
24 Hill  
26 Williams  
20 Lee  
24 Archer

Fullback

38 Herman  
36 Workman  
32 Calborn  
34 Hawkins  
30 Melton

Right Halfback

42 Sims  
44 Russo  
46 Kiepke  
40 D. Smith  
48 Ballew

Defensive Lineup

Left End	Left Tackle	Middle Guard	Right Tackle	Right End
81 Hannum	74 Dejanovich	76 Mirich	73 Oman	72 Cahill
82 Schultz	85 Shorty	63 Fernandez	75 James	86 Lewis
83 Kruezer	77 Shaver	62 Dora	70 St. Louis	87 Kelley

Left Linebacker

61 Harvell  
65 Pena  
66 Smith

Right Linebacker

52 Campbell  
34 Hawkins  
54 Dave Harris

Left Cornerback

24 Hill  
44 Russo  
28 Estrada

Right Cornerback

60 Reyes  
36 Workman  
38 Herman

Left Safety

18 Conway  
48 Ballew  
22 Archer  
14 Schilling  
40 D. Smith

Right Safety

26 Williams  
12 Welsh  
42 Sims  
46 Kiepke  
20 Lee