

Arizona State College

LUMBERJACKS

vs.

Idaho State College

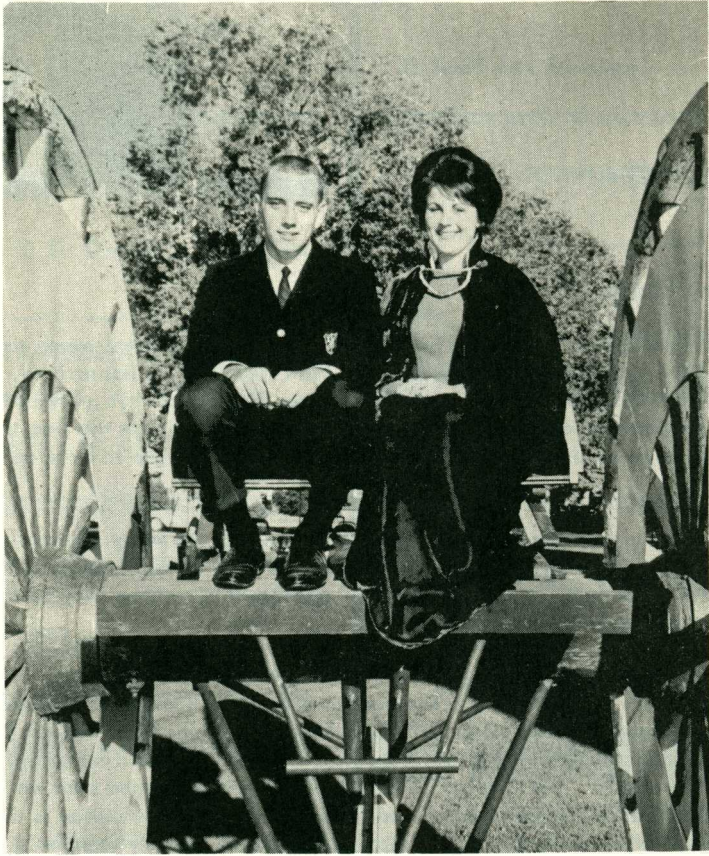
BENGALS



SATURDAY, OCTOBER 5, 1963 - 2:00 P.M.

LUMBERACK STADIUM

# Homecoming King & Queen



Selected by ASC students to reign over 1963 Homecoming as King and Queen are John Campbell, Phoenix, and Karen Byers, Needles, Calif.

Both King John and Queen Karen are seniors at ASC. A member of the Chain Gang, King John is a physical education major and an active member of Sigma Chi Omega, social fraternity. He actively participates in intramural sports.

Queen Karen, a history major, is active in student government as well as other activities. She is a member of Alpha Omicron Pi, social sorority, and serves as rush chairman. She was president of the sorority last year and also treasurer of Cardinal Key. As a sophomore she was treasurer of Spurs and sorority chaplain.

# Dedicatee



Well-known and respected by students, faculty, and alumni for his work as sponsor of the Arizona Playmakers and as speech and drama instructor, Ralph J. Holly, was selected by the ASC student government as 1963 Homecoming Dedicatee.

Since coming to ASC in 1945, Holly has directed the Playmakers in producing more than 50 plays. This group has been entertaining students and townspeople with outstanding productions for about 35 years. He is co-sponsor of Alpha Psi Omega, national honorary drama society at ASC.

Before joining the ASC faculty, he was a member of the faculty at Western State College at Gunnison, Colo.



#### WELCOME ALUMNI:

The Homecoming Committee extends the warmest of welcomes to you on this a day, truly dedicated to you. We have planned a day of activities which we hope will bring back the fond memories of yesterday for you. As you stroll through our rapidly growing campus you will no doubt be astounded to see the progress made in the past few years. But we feel sure that you will also be aware that, although the campus has grown, the friendly spirit which prevails here has grown at an equal rate. We wish you the very best on this, your day, and hope that it will be one long remembered.

It's Great To Be A Lumberjack,

Sincerely

Jane Howell

Robert Williams

Homecoming Co-Chairmen

# Today's Game

As "homecoming spoilers" the Lumberjacks and the Idaho State Bengals have built up an intense rivalry during the past four years, and this Homecoming game will be no exception.

Each have spoiled homecoming for the host team. In '61 the Bengals spoiled the Axers Homecoming Day game 27-0, and then last year at Pocatello the Lumberjacks got revenge by turning the table on the Bengals to the tune of 35-26. In the last four games, each have won two.

Going into today's game, the Bengals have a 1-1, win-loss record, while the Lumberjacks hope to get their first win of the season. Idaho knocked off Nevada U in their opener, 36-19, but last Saturday bogged down against Omaha U, losing 6-19.

The Lumberjacks tied their opener, 6-6, with Whittier College, and last Saturday, the powerful San Diego Marines hammered the Lumberjacks to a 40-7 win.

Missing from today's game will be end Ed Lewis. Lewis injured his shoulder in the opening game, and will probably be out of action the rest of the season. Coach Spilsbury will use quarterback Tom Conway as offensive end. Conway is an exceptionally good receiver and will probably be the key to the Axer's passing attack, and chief target of quarterback Larry Welsh. Spilsbury has given freshman tackle, Alan Shaver, 6-1, 270-pounder from Willcox, his first start as defensive tackle.



**Southwest Forest Industries**

**HELPING B-U-I-L-D a Greater Northern Arizona**

**KEEP ARIZONA GREEN!**

# Starting Offensive Lineups

Lumberjacks	Pos.	Bengals
85 Bill Shorty (195)	TE - LE	87 Carl Humphrey (216)
73 Jim Oman (240)	LT	75 John Miller (255)
63 Jim Fernandez (215)	LG	63 Jim Anaya (205)
52 Gary Campbell (185)	C	50 Ben Sanford (190)
61 Chuck Harvell (195)	RG	64 Gary Aizawa (220)
74 Owen Dejanovich (240)	RT	72 Gene Kaliikuli (225)
16 Tom Conway (190)	WE - RE	80 Kent Dean (185)
12 Larry Welsh (170)	QB	11 Billy Shaw (180)
28 David Estrada (200)	LH	22 Al Jacobsen (170)
42 Jim Sims (175)	RH	43 Dick Yorges (190)
38 George Herman (205)	FB	34 Ted Schmidt (187)

**LUMBERJACK COACHES** - Max Spilsbury, head coach; Ken Gibler, line coach; and Ed Van Winkle, assistant coach.

Trainer - Levi Woods

Managers - Nacho Castro, John Klein, and Norton Miller

Team Physician - Dr. M. G. Fronske

**BENGAL COACHES** - I. J. (Babe) Caccia, head coach; Leo McKillip, backfield coach; Dean Thomas, end coach.

Trainer - Bob Beeten

**OFFICIALS** - Referee, Glen Barlow, Phoenix; Umpire, Scott Fry, Head Linesman, Harold Kurtz, Phoenix; Field Judge, Bob Korte, Phoenix

**Southern Union Gas**  
*Company*

"Helping Build the

Great Southwest"

"OUR PRIVILEGE AND PLEDGE"

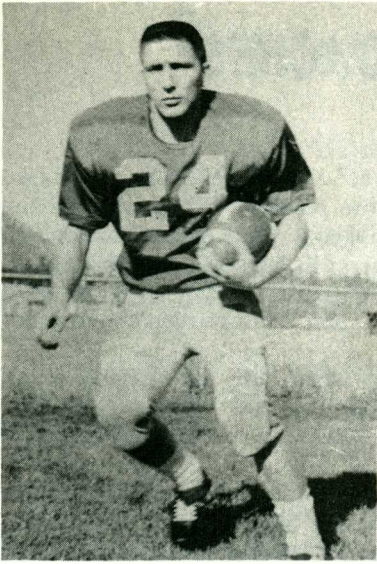
**THE PRINT SHOP**

FLAGSTAFF

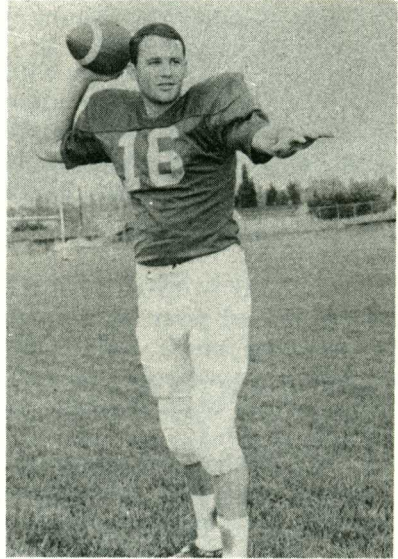
TYPE and PHOTO OFFSET

P. O. Box 1578 — Phone PR 4-2652

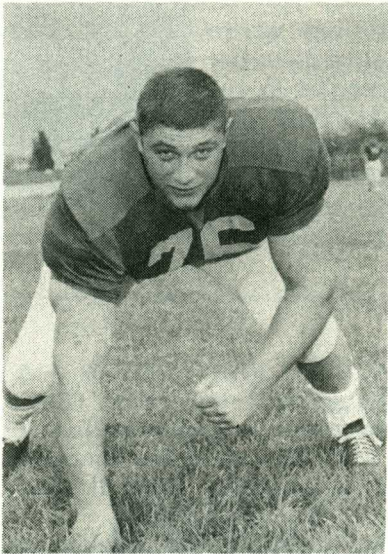
# Logger Veterans



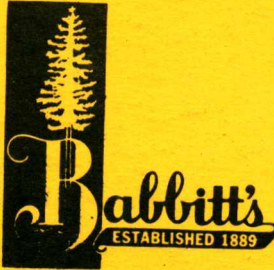
Wally Hill - Halfback



Tom Conway - End & Quarterback



Rex Mirich - Captain - All-American



FLAGSTAFF - WINSLOW - WILLIAMS  
GRAND CANYON - HOLBROOK - PAGE

# The 1889 Shop

GENTLEMEN'S APPAREL  
FLAGSTAFF

CAMPUS  
HEADQUARTERS  
FOR  
CLOTHES  
OF  
DISTINCTION



## 1963 FOOTBALL SCHEDULE

Date	Opponent	Place
Sept. 21	Whittier College	Flagstaff
Sept. 28	San Diego Marines	Flagstaff
Oct. 5	Idaho State (Homecoming)	Flagstaff
Oct. 12	New Mexico Highlands University	Las Vegas, N. M.
Oct. 19	Montana State College	Bozeman, Montana
Oct. 26	Western New Mexico University (Mom & Dad's Day)	Flagstaff
Nov. 2	Cal Poly (Pomona)	Flagstaff
Nov. 9	Colorado Western	Gunnison, Colorado
Nov. 16	Eastern New Mexico	Globe, Arizona

ASC STUDENT DISCOUNT

AT

**GARBINO**



**COLLEGE SERVICE**

(COLLEGE ENTRANCE)



**RESTAURANT**  
and Fountain

CENTER OF DOWNTOWN FLAGSTAFF  
RIGHT NEXT TO J. C. PENNEY CO.

— SURROUNDED BY PARKING — EVEN ON THE ROOF —